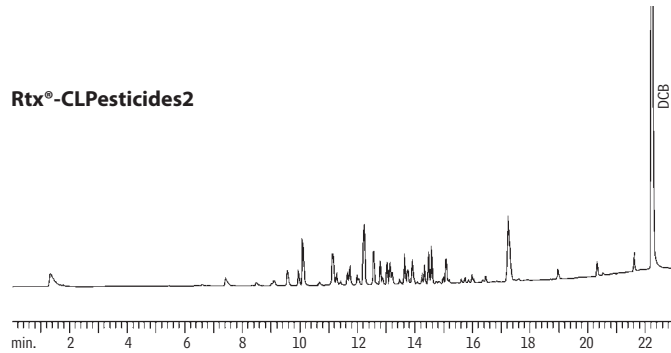
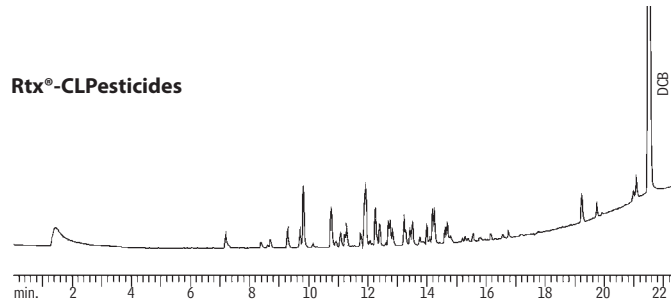


Aroclor 1232 PCBs
Rtx[®]-CLPesticides & Rtx[®]-CLPesticides2



GC_EV00450

Columns: Rtx[®]-CLPesticides, 30m, 0.32mm ID, 0.50 μ m (cat.# 11139)
Rtx[®]-CLPesticides2, 30m, 0.32mm ID, 0.25 μ m (cat.# 11324)
Inj.: 0.5 μ L direct injection, 160pg on-column concentration.
Oven temp.: 120°C (hold 1 min.) to 300°C @ 9°C/min. (hold 10 min.)
Inj. temp.: 210°C
Det.: ECD with anode purge, 310°C
Carrier gas: helium

Aroclor 1242 PCBs
Rtx[®]-CLPesticides & Rtx[®]-CLPesticides2

