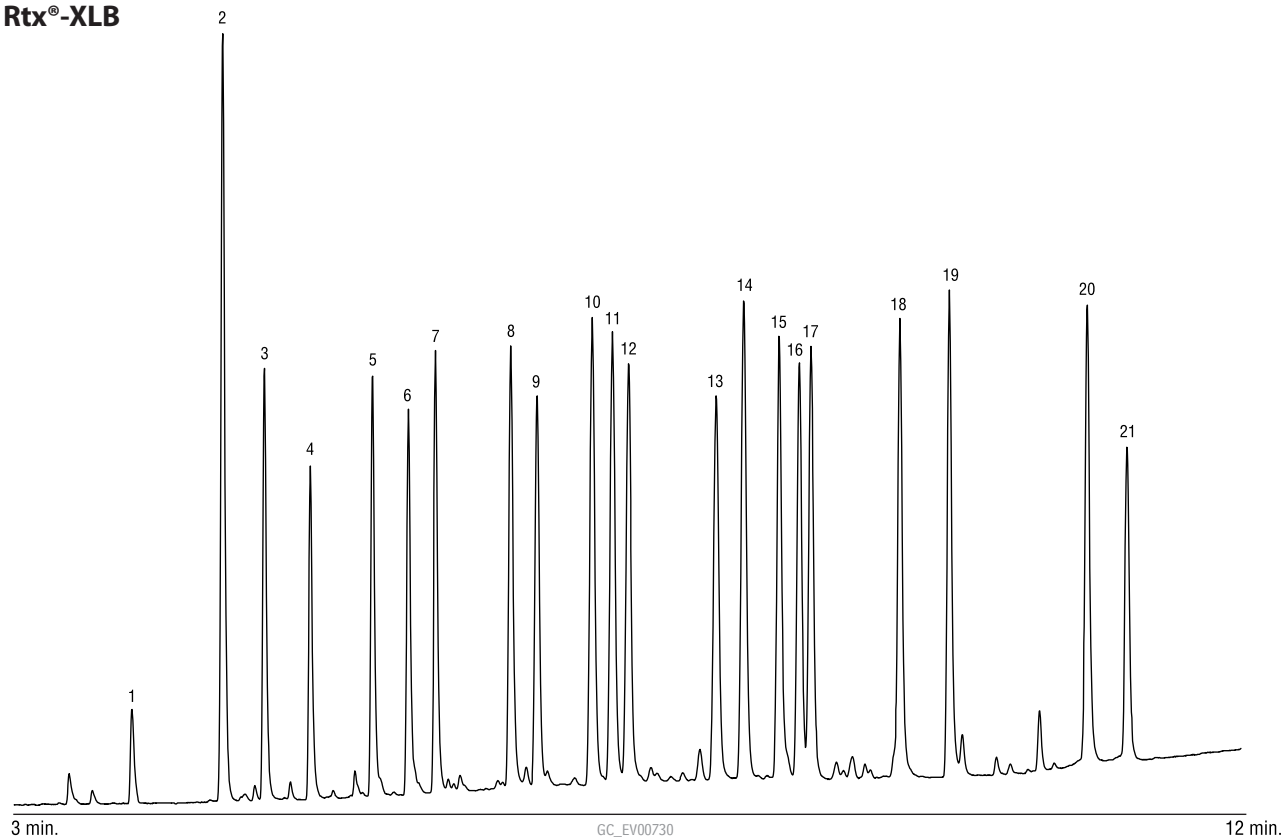


PCB Congeners
Rtx®-XLB

Column: Rtx®-XLB, 30m, 0.32mm ID, 0.50 μ m (cat.# 12839)
 Sample: 200ppb each PCB congener in hexane (cat.# 32416), 200ppb
 2,4,5,6-tetrachloro-*m*-xylene (SS) (cat.# 32027), 100ppb
 decachlorobiphenyl (IS) (cat.# 32289)
 Inj.: 1.0 μ L splitless (hold 0.75 min.), 4mm Drilled Uniliner® inlet liner (cat.# 21055)
 Inj. temp.: 220°C
 Carrier gas: hydrogen, constant pressure
 Linear velocity: 66cm/sec. @ 120°C
 Oven temp.: 120°C (hold 0.5 min.) to 260°C @ 29°C/min. (hold 2.5 min.), to 330°C @
 28°C/min. (hold 5 min.)
 Det.: ECD @ 320°C

Compound	RT (min.)
1. 2-chlorobiphenyl	3.86
2. 2,4,5,6 tetrachloro- <i>m</i> -xylene (SS)	4.53
3. 2,3-dichlorobiphenyl	4.83
4. 2,2',5-trichlorobiphenyl	5.17
5. 2,4',5-trichlorobiphenyl	5.63
6. 2,2',5,5'-tetrachlorobiphenyl	5.89
7. 2,2',3,5'-tetrachlorobiphenyl	6.09
8. 2,3',4,4'-tetrachlorobiphenyl	6.64
9. 2,2',4,5,5'-pentachlorobiphenyl	6.84
10. 2,2',3,4,5'-pentachlorobiphenyl	7.24
11. 2,3,3',4',6-pentachlorobiphenyl	7.39
12. 2,2',3,5,5',6-hexachlorobiphenyl	7.51
13. 2,2',4,4',5,5'-hexachlorobiphenyl	8.15
14. 2,2',3,4,5,5'-hexachlorobiphenyl	8.35
15. 2,2',3,4,4',5'-hexachlorobiphenyl	8.61
16. 2,2',3,4',5,5',6-heptachlorobiphenyl	8.76
17. 2,2',3,4,4',5',6-heptachlorobiphenyl	8.84
18. 2,2',3,4,4',5,5',6-heptachlorobiphenyl	9.50
19. 2,2',3,3',4,4',5'-heptachlorobiphenyl	9.86
20. 2,2',3,3',4,4',5,5',6-nonachlorobiphenyl	10.87
21. decachlorobiphenyl (SS)	11.17