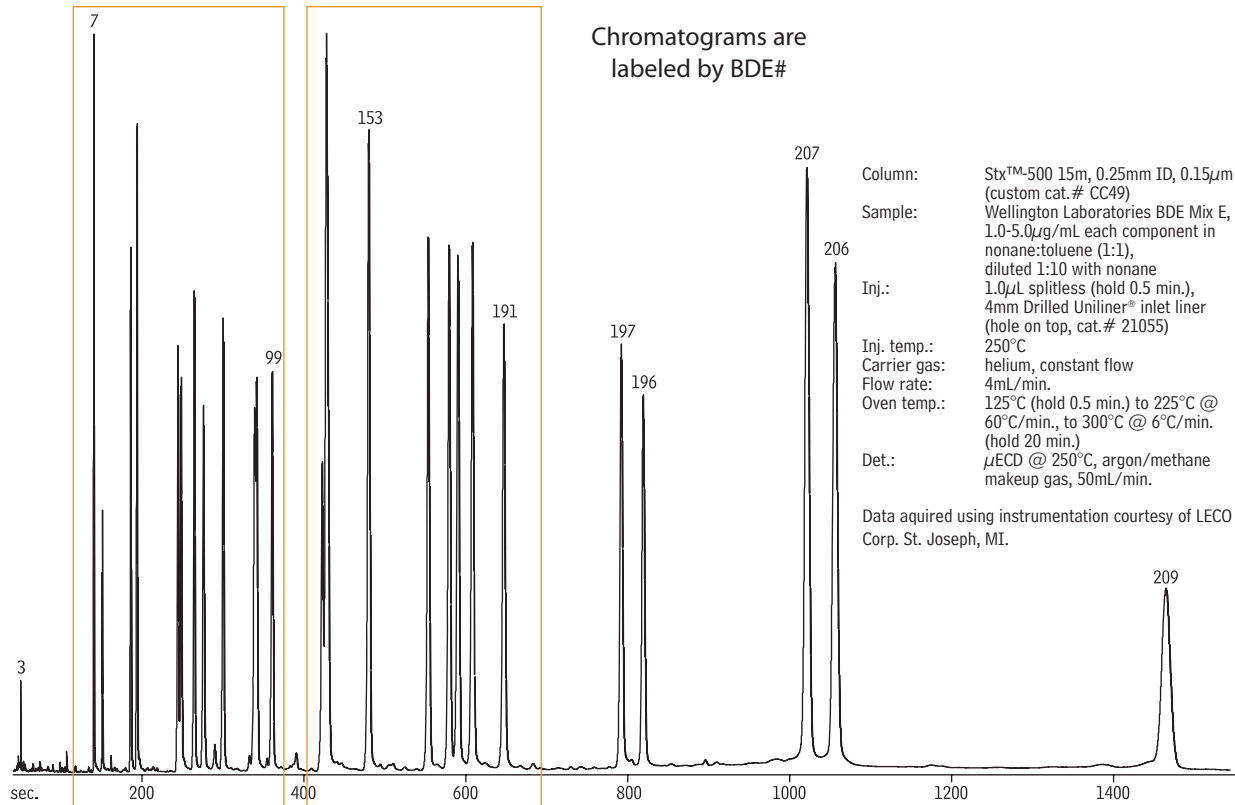


Polybrominated Diphenyl Ethers (PBDEs)

Polybrominated Diphenyl Ethers (PBDEs)

Stx™-500

Chromatograms are labeled by BDE#



Column: Stx™-500 15m, 0.25mm ID, 0.15 μ m (custom cat.# CC49)
 Sample: Wellington Laboratories BDE Mix E, 1.0-5.0 μ g/mL each component in nonane:toluene (1:1), diluted 1:10 with nonane
 Inj.: 1.0 μ L splitless (hold 0.5 min.), 4mm Drilled Uniliner® inlet liner (hole on top, cat.# 21055)
 Inj. temp.: 250°C
 Carrier gas: helium, constant flow
 Flow rate: 4mL/min.
 Oven temp.: 125°C (hold 0.5 min.) to 225°C @ 60°C/min., to 300°C @ 6°C/min. (hold 20 min.)
 Det.: μ ECD @ 250°C, argon/methane makeup gas, 50mL/min.

Data acquired using instrumentation courtesy of LECO Corp. St. Joseph, MI.

