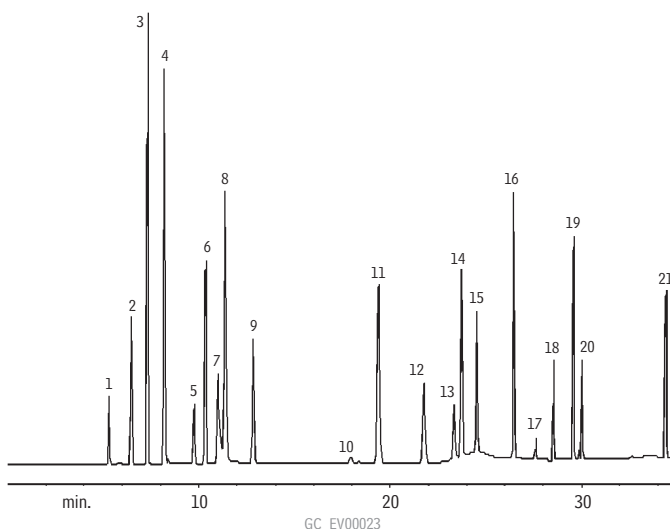


Chlorinated Disinfection Byproducts

Chlorinated Disinfection Byproducts

US EPA Method 551.1

Rtx®-5



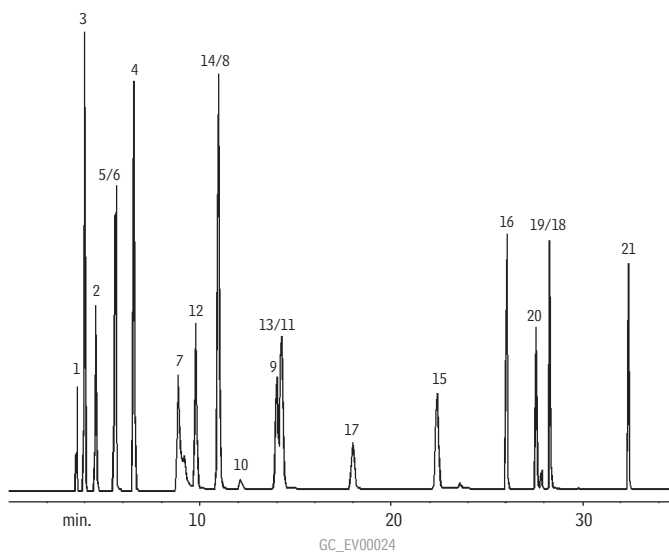
Column: Rtx®-5, 30m, 0.25mm ID, 1.0 μ m (cat.# 10253)
 Inj.: 1.0 μ L split injection. 1ng on-column concentration.
 Oven temp.: 35°C (hold 22 min.) to 200°C @ 10°C/min.
 Inj./det. temp.: 200°C/290°C
 Carrier gas: helium
 Linear velocity: 30cm/sec. @ 50°C
 ECD sensitivity: 20kHz full scale
 Split ratio: 10:1

1. chloroform
2. 1,1,1-trichloroethane
3. carbon tetrachloride
4. trichloroacetonitrile
5. trichloroethylene
6. bromodichloromethane
7. chloral hydrate
8. dichloroacetonitrile
9. 1,1-dichloro-2-propanone
10. 1,1,2-trichloroethane
11. chloropicrin
12. dibromochloromethane
13. 1,2-dibromoethane (EDB)
14. tetrachloroethylene
15. bromochloroacetonitrile
16. 1,1,1-trichloro-2-propanone
17. bromoform
18. dibromoacetonitrile
19. 1,2,3-trichloropropane
20. 4-bromofluorobenzene (IS)
21. 1,2-dibromo-3-chloropropane (DBCP)

Chlorinated Disinfection Byproducts

US EPA Method 551.1

Rtx®-200



Column: Rtx®-200, 30m, 0.25mm ID, 1.0 μ m (cat.# 15053)
 Inj.: 1.0 μ L split injection. 1ng on-column concentration.
 Oven temp.: 35°C (hold 22 min.) to 200°C @ 10°C/min.
 Inj./det. temp.: 200°C/290°C
 Carrier gas: helium
 Linear velocity: 30cm/sec. @ 50°C
 ECD sensitivity: 20kHz full scale
 Split ratio: 10:1

1. chloroform
2. 1,1,1-trichloroethane
3. carbon tetrachloride
4. trichloroacetonitrile
5. trichloroethylene
6. bromodichloromethane
7. chloral hydrate
8. dichloroacetonitrile
9. 1,1-dichloro-2-propanone
10. 1,1,2-trichloroethane
11. chloropicrin
12. dibromochloromethane
13. 1,2-dibromoethane (EDB)
14. tetrachloroethylene
15. bromochloroacetonitrile
16. 1,1,1-trichloro-2-propanone
17. bromoform
18. dibromoacetonitrile
19. 1,2,3-trichloropropane
20. 4-bromofluorobenzene (IS)
21. 1,2-dibromo-3-chloropropane (DBCP)