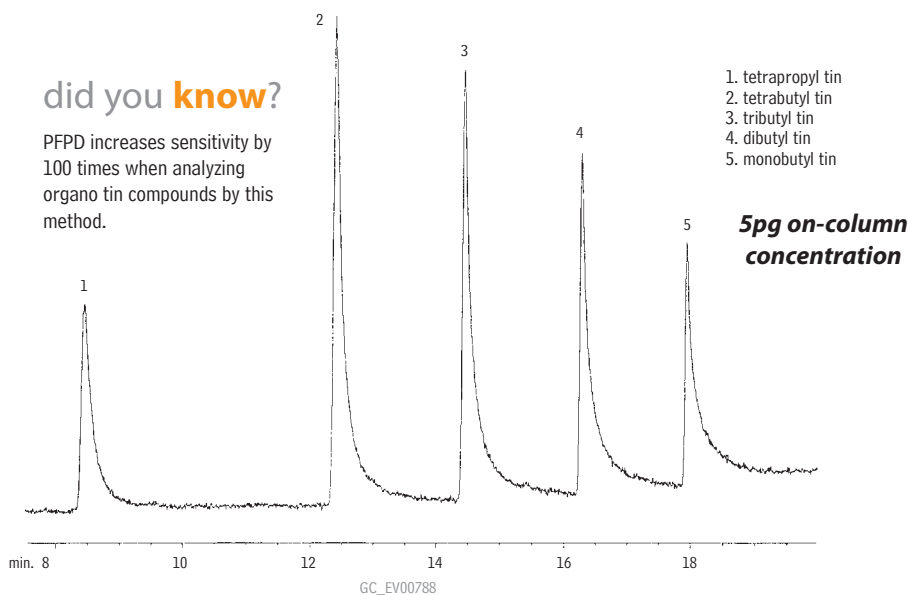


Organo Tins Rtx®-35

did you know?

PFPD increases sensitivity by 100 times when analyzing organo tin compounds by this method.



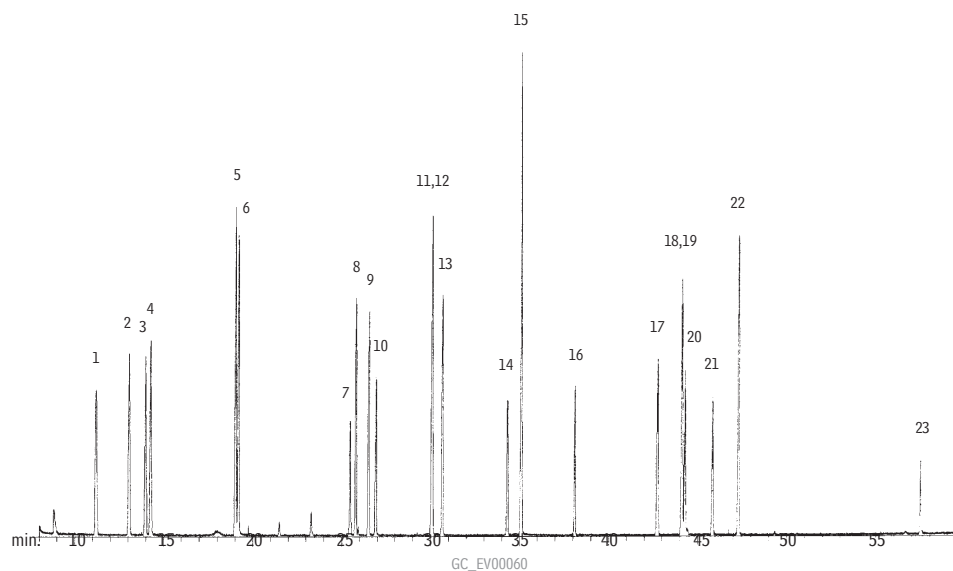
1. tetrapropyl tin
2. tetrabutyl tin
3. tributyl tin
4. dibutyl tin
5. monobutyl tin

**5pg on-column
concentration**

Column: Rtx®-35, 30m, 0.32mm ID, 1.0 μ m (cat.# 10454)
 Inj.: direct injection using a Uniliner® inlet liner (cat.# 20335)
 Conc.: 5pg on-column
 Head pressure: 15psi, constant
 Oven temp.: 100°C (hold 1 min.) to 285°C @ 10°C/min. (hold 10 min.)
 Detector: PFPD* Model 5380 courtesy of O.I. Analytical Corp., College Station, TX

*Peak tailing is a function of this detector.

Explosives Rtx®-200



Column: Rtx®-200, 30m, 0.25mm ID, 0.25 μ m (cat.# 15023)
 Inj.: 1.0 μ L splitless injection
 Conc.: 20ng/ μ L
 Oven temp.: 80°C (hold 2 min.) to 260°C @ 3°C/min. (hold 2 min.)
 Inj. temp.: 280°C
 Det.: MS, 300°C
 Carrier gas: helium
 Linear velocity: 20cm/sec. set @ 80°C
 Splitless hold time: 0.6 min.

1. 2-nitrotoluene
2. 3-nitrotoluene
3. 4-nitrotoluene
4. 2,3-diaminotoluene
5. 2,6-diaminotoluene
6. 2,4-diaminotoluene
7. 1,4-dinitrobenzene
8. 2,6-dinitrotoluene
9. 2-amino-6-nitrotoluene
10. 1,3-dinitrobenzene
11. 2,4-dinitrotoluene
12. 2-amino-4-nitrotoluene

13. 2,3-dinitrotoluene
14. 3,4-dinitrotoluene
15. 3-nitrobiphenyl
16. 2,4,6-trinitrotoluene
17. 2,4,5-trinitrotoluene
18. 4-amino-2,6-dinitrotoluene
19. 2,3,4-trinitrotoluene
20. 1,3-dinitronaphthalene
21. 2,6-diamino-4-nitrotoluene
22. 2-amino-4,6-dinitrotoluene
23. 2,2-dinitrobiphenyl