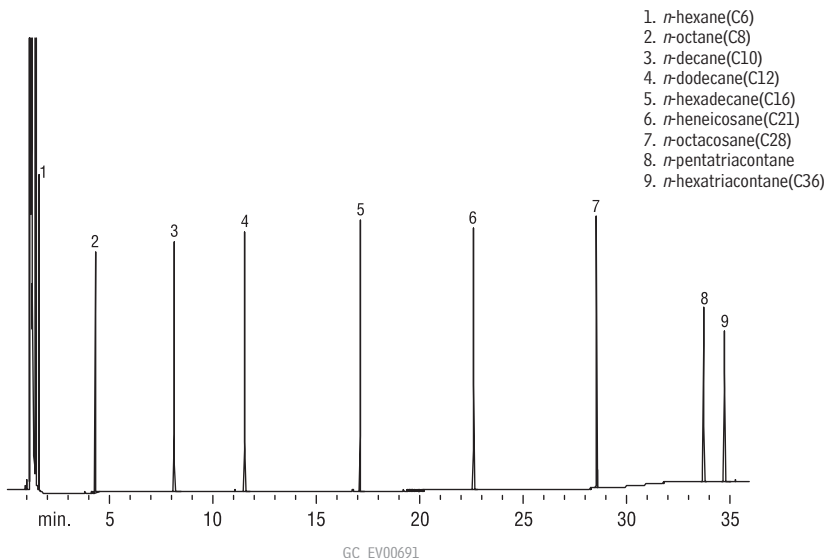


Gasoline Range Organics (GRO)

Texas UST: Alternate Boiling Point/Carbon Number Distribution Marker

Rtx®-5

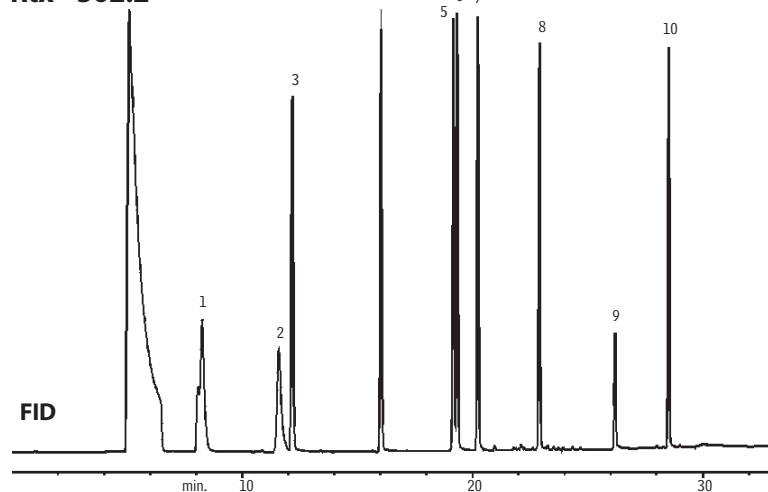


1. *n*-hexane(C6)
2. *n*-octane(C8)
3. *n*-decane(C10)
4. *n*-dodecane(C12)
5. *n*-hexadecane(C16)
6. *n*-heneicosane(C21)
7. *n*-octacosane(C28)
8. *n*-pentatriacontane
9. *n*-hexatriacontane(C36)

Column: Rtx®-5, 30m, 0.25mm ID, 0.50 μ m (cat.# 10238)
 Sample: 1 μ L Alternate Boiling Point/Carbon Number Distribution Marker Stock Solution (cat.# 31639), 200 μ g/mL each component in pentane
 Carrier gas: hydrogen @ 40cm/sec.
 Oven temp.: 40°C (hold 2 min.) to 330°C @ 10°C/min. (hold 5 min.)
 Inj. temp.: 250°C
 Det. temp.: 330°C
 Det.: FID

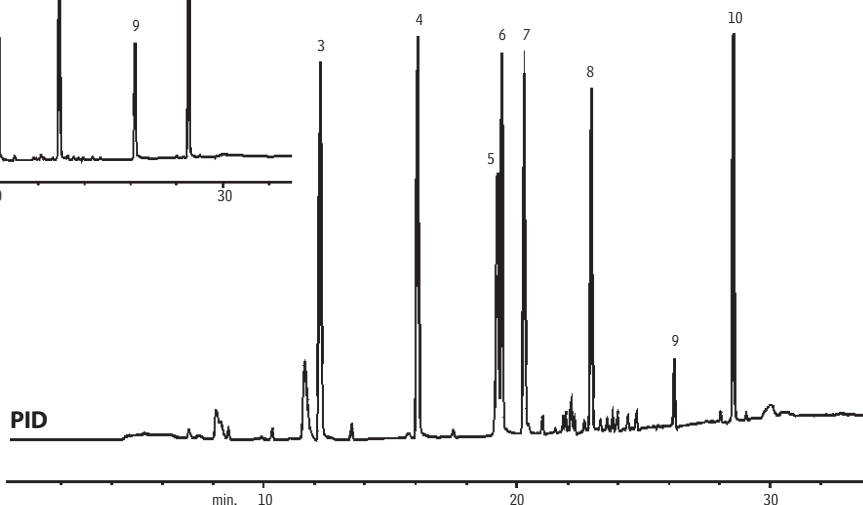
Wisconsin GRO Mix, plus C12

Rtx®-502.2



1. 3-methylpentane
2. 2,2,4-trimethylpentane (isooctane)
3. benzene
4. toluene
5. ethylbenzene
6. *m*-xylene
7. *o*-xylene
8. 1,2,4-trimethylbenzene
9. dodecane
10. naphthalene

Column: Rtx®-502.2, 105m, 0.53mm ID, 3.0 μ m (cat.# 10910)
 Sample: GRO Mix (WISC) + C12 (cat.# 30069)
 Conc.: 200ppb each in 5mL of H₂O.
 Oven temp.: 40°C (hold 1 min.) to 100°C @ 5°C/min. to 240°C @ 8°C/min. (hold 8 min.)
 Inj./det. temp.: 200°C/250°C
 Carrier gas: helium
 Flow rate: 10mL/min.
 Trap: Tenax, silica gel, charcoal
 Purge: 12 min. @ 40mL/min.
 Desorb preheat: 175°C
 Desorb temp.: 180°C
 Desorb time: 2 min.
 Desorb flow: 10mL/min.
 FID sensitivity: 16 x 10⁻¹¹ AFS



GC_EV00071