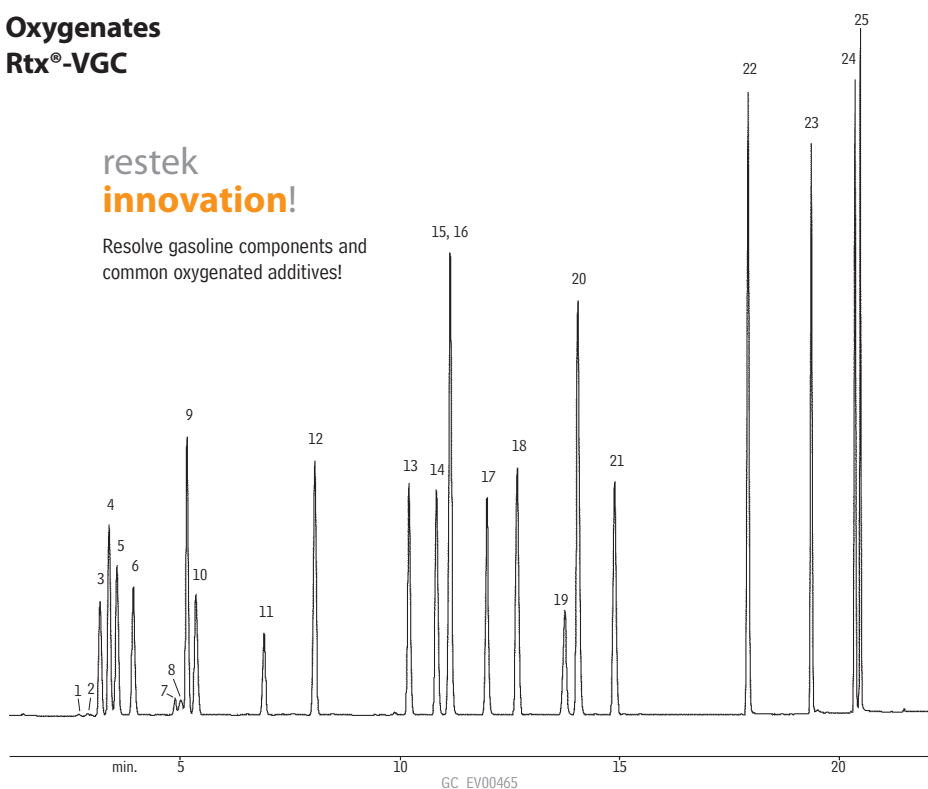


Oxygenates Rtx®-VGC

restek
innovation!

Resolve gasoline components and
common oxygenated additives!

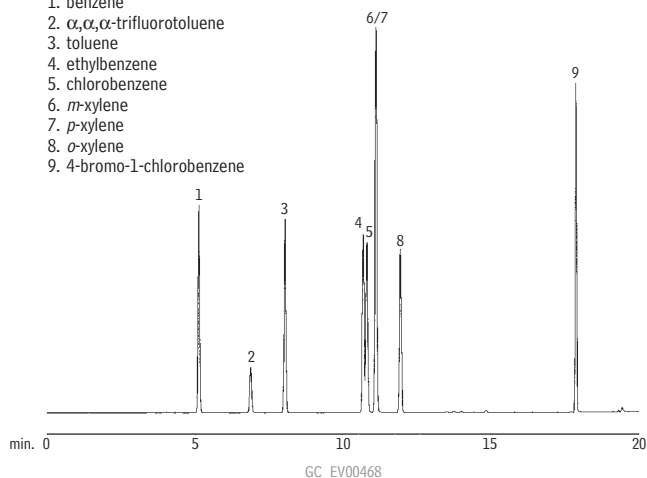


1. 2-methylpentane
2. 3-methylpentane
3. methyl *tert*-butyl ether
4. *tert*-butanol
5. diisopropyl ether
6. ethyl-*tert*-butyl ether
7. isooctane
8. *n*-heptane
9. benzene
10. *tert*-amyl-methyl ether
11. α,α,α -trifluorotoluene
12. toluene
13. 1-chloro-3-fluorobenzene
14. ethylbenzene
15. *m*-xylene
16. *p*-xylene
17. *o*-xylene
18. isopropylbenzene
19. ethylmethylbenzene
20. 1,3,5-trimethylbenzene
21. 1,2,4-trimethylbenzene
22. 4-bromochlorobenzene
23. naphthalene
24. 2-methylnaphthalene
25. 1-methylnaphthalene

see conditions below

BTEX Rtx®-VGC

1. benzene
2. α,α,α -trifluorotoluene
3. toluene
4. ethylbenzene
5. chlorobenzene
6. *m*-xylene
7. *p*-xylene
8. *o*-xylene
9. 4-bromo-1-chlorobenzene



Conditions for all chromatograms on this page:

Column: Rtx®-VGC, 30m, 0.45mm, 2.55 μ m (cat.# 19408)
 Sample: each component 100ppb in 5mL of RO water, except *tert*-butanol 5000ppb; 2/1-methylnaphthalene 150ppb; ethylmethylbenzene 50ppb
 Concentrator: Tekmar LSC-3100 Purge and Trap
 Trap: Vocarb 3000
 Purge: 11 min. @ 40mL/min. @ 35°C
 Dry purge: 1 min. (MCS bypassed)
 GC: Finnigan 9001
 Oven temp.: 40°C (hold 2 min.) to 130°C @ 6°C/min. (hold 0 min.) to 230°C
 Carrier gas: helium @ ~8mL/min.
 Detector: Finnigan PID, make up 7mL min., purge 7mL/min., set @ 0.35mV, base temperature 200°C.

Unleaded Gasoline Rtx®-VGC

1. benzene
2. toluene
3. ethylbenzene
4. *m*-xylene
5. *p*-xylene
6. *o*-xylene
7. isopropylbenzene
8. ethylmethylbenzene
9. 1,2,3-trimethylbenzene
10. 1,2,4-trimethylbenzene
11. naphthalene
12. 2-methylnaphthalene
13. 1-methylnaphthalene

