

Polyunsaturated FAME Analysis

FAMEWAX (polar phase; Crossbond® polyethylene glycol)

- Application-specific columns for FAMEs, specially tested with a FAME mixture.
- Temperature range: 20°C to 250°C.

The elution order of polyunsaturated FAMEs on FAMEWAX columns is comparable to that on other Carbowax® columns, but baseline resolution is achieved in significantly less time.

FAMEWAX Columns (fused silica)

(Crossbond® polyethylene glycol)

ID	df (µm)	temp. limits	30-Meter
0.25mm	0.25	20 to 250°C	12497
0.32mm	0.25	20 to 250°C	12498
0.53mm	0.50	20 to 250°C	12499

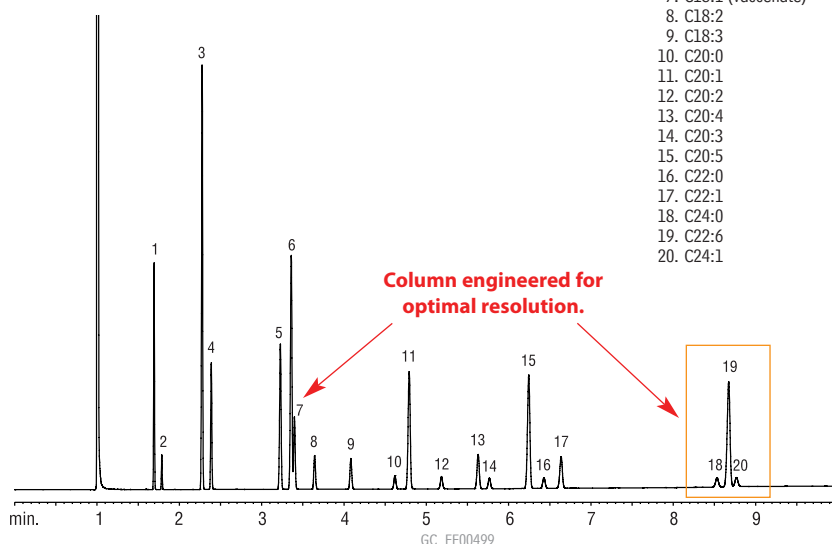
similar **phase**

Omegawax

FAMEs (marine oil standard) on a FAMEWAX column.

Column: FAMEWAX, 30m, 0.32mm ID, 0.25µm (cat. # 12498)
 Inj.: 1µL
 Conc.: 10,000µg/mL in isoctane (total FAMES; see breakdown in peak list)
 Oven temp.: 195–240°C at 5°C/min., 1 min. hold
 Inj./det. temp.: 250°C/275°C
 Carrier gas: hydrogen
 Flow rate: 3mL/min. (constant flow)
 Split ratio: 100:1

Peak List	Conc. (µg/mL)
1. C14:0	600
2. C14:1	100
3. C16:0	1600
4. C16:1	500
5. C18:0	800
6. C18:1 (oleate)	1300
7. C18:1 (vaccenate)	400
8. C18:2	200
9. C18:3	200
10. C20:0	100
11. C20:1	900
12. C20:2	100
13. C20:4	300
14. C20:3	100
15. C20:5	1000
16. C22:0	100
17. C22:1	300
18. C24:0	100
19. C22:6	1200
20. C24:1	100



free literature

Foods, Flavors, and Fragrances

Includes important analysis tips and chromatograms for analysis of fats and oils, carbohydrates, vitamins, amino acids, organic acids, preservatives, flavors and fragrances, essential oils, and chiral separations. Retention time indices and complete product listings for all relevant GC and HPLC products also are included.

Minicatalog
lit. cat.# 59260A

Monitoring Volatile Compounds in Food Contact Packaging, Using Purge and Trap GC/MS and an Rtx®-5MS Capillary Column

Download your free copy from www.restek.com

Applications Note
lit. cat.# 59348

Flavor and Fragrance Compounds Analysis

Rt™-CW20M F&F (polar phase; Carbowax® polyethylene glycol—not bonded)

- Application-specific columns for flavor and fragrance compounds, specially tested.
- True non-bonded Carbowax® 20M polarity.
- Temperature range: 20°C to 220°C.

Rt™-CW20M F&F Columns (fused silica)

(Carbowax® polyethylene glycol)

ID	df (µm)	temp. limits	30-Meter	50-Meter
0.25mm	0.25	60 to 220°C	12523	
0.32mm	0.33	60 to 220°C		12539

similar **phases**

HP-20M, Carbowax® 20M