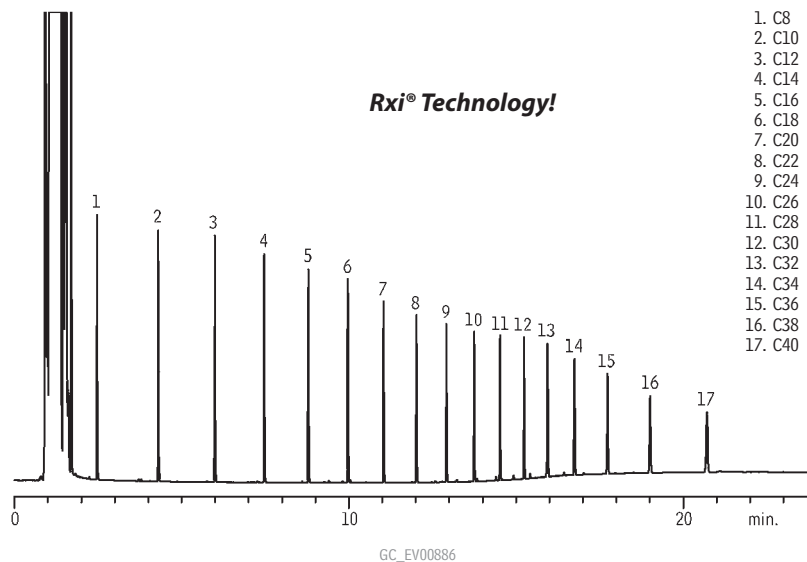


Gasoline Range Organics (GRO)

Petroleum Hydrocarbons (TPH)

Rxi®-1ms

new!



Column: Rxi®-1ms, 20m, 0.18mm ID, 0.18 μ m (cat.# 13302)
 Sample: Florida TRPH Standard (cat.# 31266), 500 μ g/mL each component in hexane
 Inj.: 0.5 μ L, split, split ratio 20:1, 3.5mm Precision™ inlet liner (cat.# 21021)
 Instrument: Shimadzu GC-2010*
 Inj. temp.: 275°C
 Carrier gas: hydrogen, constant pressure
 Linear velocity: 55cm/sec. @ 40°C
 Oven temp.: 40°C (hold 1 min.) to 330°C @ 20°C/min. (hold 10 min.)
 Det.: FID @ 350°C

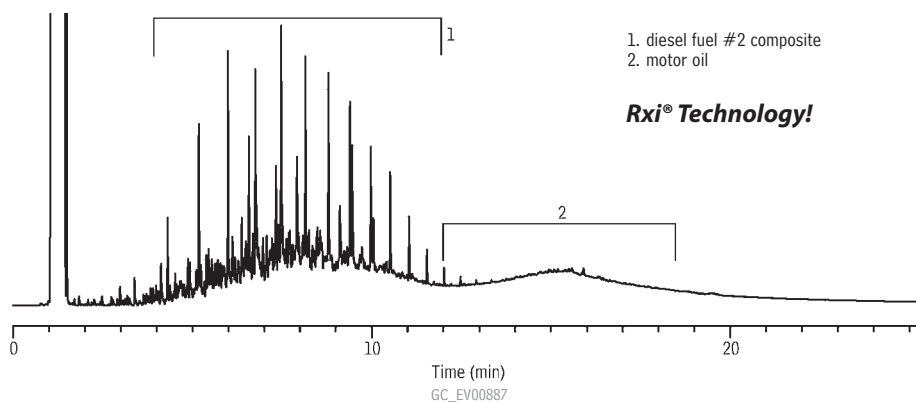
*GC courtesy of Shimadzu Scientific.

Lubrication Range Organics

Diesel Fuel #2/Motor Oil

Rxi®-1ms

new!



Column: Rxi®-1ms, 20m, 0.18mm ID, 0.18 μ m (cat.# 13302)
 Sample: Diesel #2/Motor Oil (cat.# 31682) 5000 μ g/mL each component in hexane
 Inj.: 0.5 μ L, split, split ratio 20:1, 3.5mm Precision™ inlet liner (cat.# 21021)
 Instrument: Shimadzu GC-2010
 Inj. temp.: 275°C
 Carrier gas: hydrogen, constant pressure
 Linear velocity: 55cm/sec. @ 40°C
 Oven temp.: 40°C (hold 1 min.) to 330°C @ 20°C/min. (hold 10 min.)
 Det.: FID @ 350°C