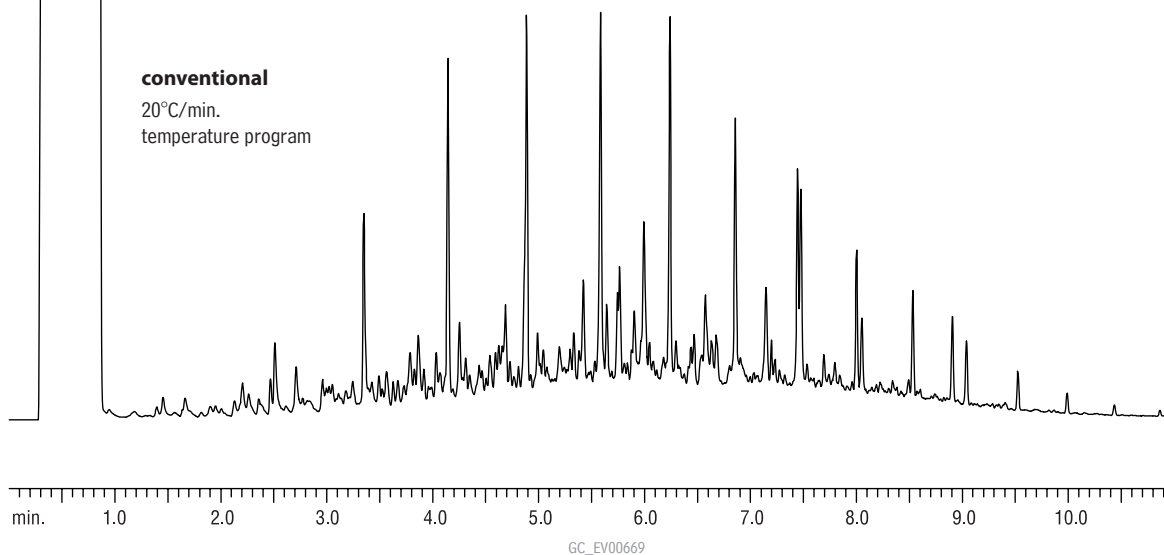


Diesel Fuel Rtx®-5

For Biodiesel chromatograms,
see pages 678–681.

Column: Rtx®-5, 15m, 0.25mm ID, 0.25 μ m (cat.# 10220)
 Sample: 500 μ g/mL Diesel Fuel Composite standard (cat.# 31093) in methylene chloride
 Inj.: 1.0 μ L splitless (hold 0.5 min.), 4mm single gooseneck inlet liner (cat.# 20904)
 Inj. temp.: 260°C
 Carrier gas: helium, constant pressure
 Linear velocity: 76cm/sec. @ 50°C
 Oven temp.: 50°C (1 min.) to 330°C @ 20°C/min.
 Det.: FID @ 330°C

conventional
20°C/min.
temperature program



DRO Mix Rtx®-5

1. C10
2. C12
3. C14
4. C16
5. C18
6. C20
7. C22
8. C24
9. C26
10. C28

Column: Rtx®-5, 30m, 0.53mm ID, 1.0 μ m (cat.# 10255)
 Sample: Direct injection of DRO Mix (cat.# 31064)
 Conc.: 50ng/ μ L
 Oven temp.: 40°C (hold 2 min.) to 310°C
 @ 12°C/min. (hold 10 min.)
 Inj./det. temp.: 280°C/310°C
 Carrier gas: helium @ 65cm/sec.
 FID sensitivity: 8 x 10¹¹ AFS

