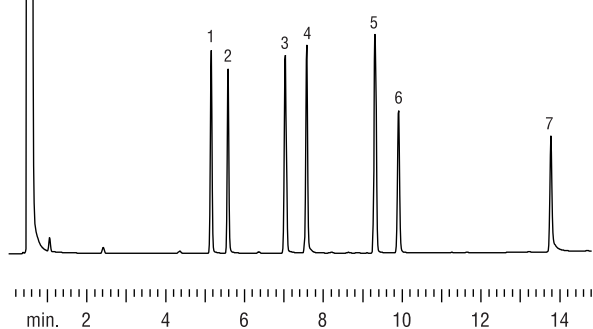


Glycols
Stabilwax®

1. 1,2-propylene glycol
2. ethylene glycol
3. 1,3-butylene glycol
4. 1,3-propylene glycol
5. 1,4-butylene glycol
6. diethylene glycol
7. glycerol

Column: Stabilwax®, 30m, 0.53mm ID, 1.0µm (cat.# 10655)
 Inj.: 1.0µL direct injection, open-top Uniliner® inlet liner without wool (cat.# 20843-205)
 Conc.: 150ppm
 Solvent: water/methanol (50:50)
 Oven temp.: 80°C to 200°C @ 8°C/min. (hold 10 min.)
 Septa purge: 5.0cc/min.
 Carrier gas: helium
 Linear velocity: 50cm/sec.
 Column flow rate: 6.9mL/min.
 Det.: FID @ 270°C
 Make up gas flow: 45cc/min.

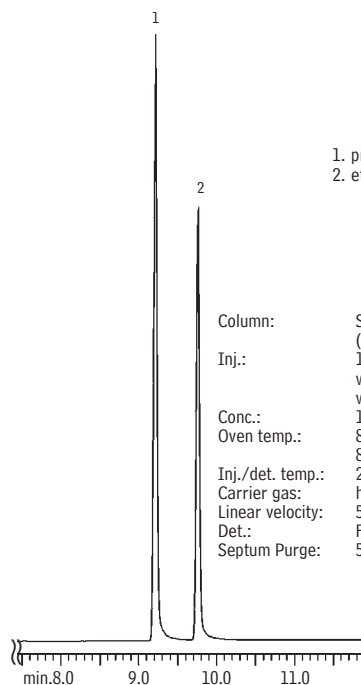


GC_EV00476

Glycols
Stabilwax®

1. propylene glycol
2. ethylene glycol

Column: Stabilwax®, 30m, 0.53mm ID, 1.0µm (cat.# 10655)
 Inj.: 1.0µL of direct injection of glycols in water. Open-top Uniliner® inlet liner without wool (cat.# 20843-205)
 Conc.: 100ppm
 Oven temp.: 80°C (hold 1 min.) to 200°C @ 8°C/min. (hold 5 min.)
 Inj./det. temp.: 225°C/250°C
 Carrier gas: helium
 Linear velocity: 50cm/sec.
 Det.: FID
 Septum Purge: 5.0cc/min.



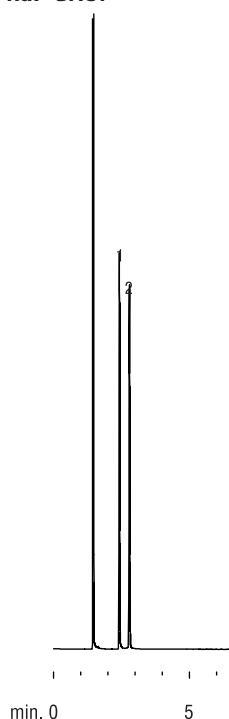
GC_EV00546

Glycols
Rtx®-BAC1 & Rtx®-BAC2

Rtx®-BAC1

1. ethylene glycol
2. propylene glycol

Columns: Rtx®-BAC1, 30m, 0.32mm ID, 1.8µm (cat.# 18003)
 Rtx®-BAC2, 30m, 0.32mm ID, 1.2µm (cat.# 18002)
 Inj.: 0.5µL split injection
 Conc.: 1%
 Solvent: methanol
 Oven temp.: 100°C to 240°C @ 5°C/min. (hold 5 min.)
 Inj. temp.: 240°C
 Inj. mode: 100:1 split
 Inlet liner: 4mm single gooseneck (cat.# 20798)
 Septa purge: 5.0cc/min.
 Carrier gas: helium, constant pressure
 Pressure: 12psi
 Linear velocity: 37cm/sec.
 Column flow rate: 2.1mL/min.
 Det.: FID @ 240°C
 Make-up gas flow: 40cc/min.



GC_EV00474

Rtx®-BAC2

1. ethylene glycol
2. propylene glycol

