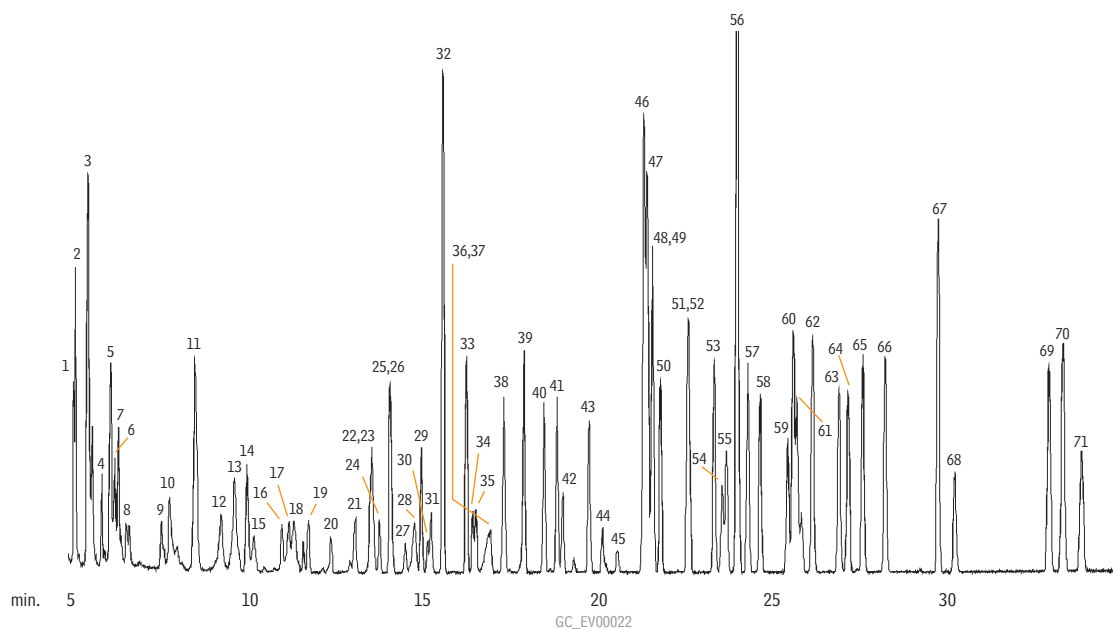


Air Toxins Rtx®-502.2



- | | | | |
|------------------------------|--------------------------------------|---------------------------|-------------------------------|
| 1. chlorodifluoromethane | 19. <i>trans</i> -1,2-dichloroethene | 37. bromodichloromethane | 55. 1,1,1,2-tetrachloroethane |
| 2. dichlorodifluoromethane | 20. 1,1-dichloroethane | 38. 4-methyl-2-pentanone | 56. 4-bromofluoromethane |
| 3. dichlorotetrafluoroethane | 21. methyl ethyl ketone | 39. octane | 57. <i>n</i> -propylbenzene |
| 4. chloromethane | 22. <i>cis</i> -1,2-dichloroethene | 40. toluene | 58. 1,3,5-trimethylbenzene |
| 5. butane | 23. methacrylonitrile | 41. 2-hexanone | 59. α -methylstyrene |
| 6. vinyl chloride | 24. chloroform | 42. 1,1,2-trichloroethane | 60. <i>tert</i> -butylbenzene |
| 7. 1,3-butadiene | 25. bromochloromethane | 43. tetrachloroethene | 61. 1,2,4-trimethylbenzene |
| 8. acetaldehyde | 26. tetrahydrofuran | 44. dibromochloromethane | 62. <i>sec</i> -butylbenzene |
| 9. bromomethane | 27. 1,1,1-trichloroethane | 45. 1,2-dibromoethane | 63. 1,3-dichlorobenzene |
| 10. chloroethane | 28. <i>n</i> -butanol | 46. chlorobenzene-d5 | 64. 1,4-dichlorobenzene |
| 11. trichlorofluoromethane | 29. heptane | 47. chlorobenzene | 65. butylbenzene |
| 12. isopropanol | 30. 1,2-dichloroethane | 48. <i>m</i> -xylene | 66. 1,2-dichlorobenzene |
| 13. acetone | 31. benzene | 49. <i>p</i> -xylene | 67. dodecane |
| 14. 1,1-dichloroethene | 32. 1,4-difluorobenzene | 50. 2-heptanone | 68. dibromochloropropane |
| 15. acetonitrile | 33. trichloroethene | 51. styrene | 69. 1,2,4-trichlorobenzene |
| 16. dichloromethane | 34. ethyl methacrylate | 52. <i>o</i> -xylene | 70. hexachlorobutadiene |
| 17. acrylonitrile | 35. 1,2-dichloropropane | 53. isopropylbenzene | 71. naphthalene |
| 18. 1-propanol | 36. 1,4-dioxane | 54. bromoform | |

Column: Rtx®-502.2, 60m, 0.32mm ID, 1.8 μ m (cat.# 10920)
 Sample: 500mL of 10ppbv standard concentrated on an AEROCAN® 6000 using a glass bead trap at 165°C then desorbed at 200°C for 4 min. @ 1mL/min., cryofocused @ -175°C then desorbed @ 150°C 35°C (hold 6 min.) to 120°C @ 15°C/min., then to 200°C @ 5°C/min., then to 220°C @ 25°C/min. (hold 10 min.)
 Oven temp.:
 Det. & det. temp.: Agilent-5971A GC/MS, 280°C
 Carrier gas: helium @ 1mL/min.
 Linear velocity: 20cm/sec.
 Scan range: 28-260amu
 Solvent delay: 4 min.

Permission to publish this chromatogram granted by Tekmar Company.