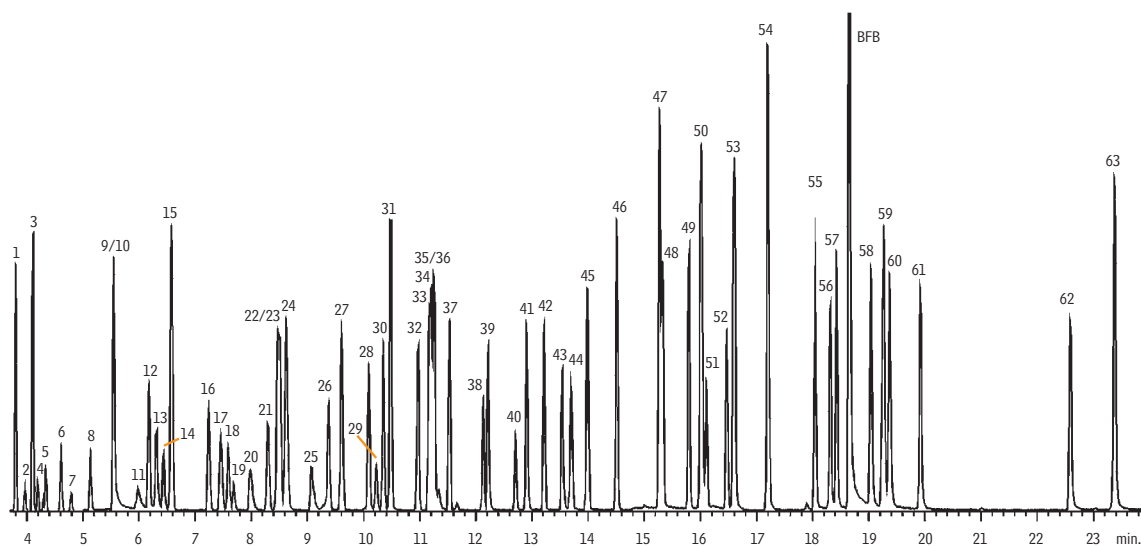


## US EPA TO-14/TO-15 Compounds

Rtx®-1



GC\_EV00379

Column: Rtx®-1, 60m, 0.32mm ID, 1.0 $\mu$ m (cat.# 10157)  
 Sample: 200mL of 10ppbv TO-15 standard, injected into TO-Can™ canister and humidified to 70% RH.  
 Concentrator: Nutech 3550 Preconcentrator  
 200mL of sample concentrated at -160°C, thermally desorbed at 150°C, and cryofocused at -185°C  
 Oven temp.: 30°C (hold 4 min.) to 175°C @ 9°C/min. to 220°C @ 40°C/min.  
 Carrier gas: helium @ 1.2mL/min.  
 Det.: Agilent 5971 MS  
 Scan range: 35-265amu

- |                                      |                                       |                               |
|--------------------------------------|---------------------------------------|-------------------------------|
| 1. dichlorofluoromethane             | 23. <i>n</i> -hexane                  | 45. 1,2-dibromoethane         |
| 2. chloromethane                     | 24. chloroform                        | 46. tetrachloroethene         |
| 3. dichlorotetrafluoroethane         | 25. tetrahydrofuran                   | 47. chlorobenzene-d5 (IS)     |
| 4. vinyl chloride                    | 26. 1,2-dichloroethane                | 48. chlorobenzene             |
| 5. 1,3-butadiene                     | 27. 1,1,1-trichloroethane             | 49. ethylbenzene              |
| 6. bromomethane                      | 28. benzene                           | 50a. <i>m</i> -xylene         |
| 7. chloroethane                      | 29. carbon tetrachloride              | 50b. <i>p</i> -xylene         |
| 8. bromoethene                       | 30. cyclohexane                       | 51. bromoform                 |
| 9. acetone                           | 31. 1,4-difluorobenzene (IS)          | 52. styrene                   |
| 10. trichlorofluoromethane           | 32. 1,2-dichloropropane               | 53. 1,1,2,2-tetrachloroethane |
| 11. isopropyl alcohol                | 33. bromodichloromethane              | 54. <i>o</i> -xylene          |
| 12. 1,1-dichloroethene               | 34. trichloroethene                   | 55. 2-chlorotoluene           |
| 13. methylene chloride               | 35. 1,4-dioxane                       | 56. 4-ethyltoluene            |
| 14. 3-chloropropene                  | 36. 2,2,4-trimethylpentane            | 57. 1,3,5-trimethylbenzene    |
| 15. carbon disulfide                 | 37. <i>n</i> -heptane                 | 58. 1,2,4-trimethylbenzene    |
| 16. Freon® TF                        | 38. <i>cis</i> -1,3-dichloropropene   | 59. 1,3-dichlorobenzene       |
| 17. <i>trans</i> -1,2-dichloroethene | 39. methyl isobutyl ketone            | 60. 1,4-dichlorobenzene       |
| 18. 1,1-dichloroethane               | 40. <i>trans</i> -1,3-dichloropropene | 61. 1,2-dichlorobenzene       |
| 19. methyl <i>tert</i> -butyl ether  | 41. 1,1,2-trichloroethane             | 62. 1,2,4-trichlorobenzene    |
| 20. methyl ethyl ketone              | 42. toluene                           | 63. hexachlorobutadiene       |
| 21. <i>cis</i> -1,2-dichloroethene   | 43. methyl butyl ketone               |                               |
| 22. bromochloromethane (IS)          | 44. dibromochloromethane              |                               |

Chromatogram courtesy of Gina Maio, Severn Trent Laboratories, Inc., Burlington, VT.