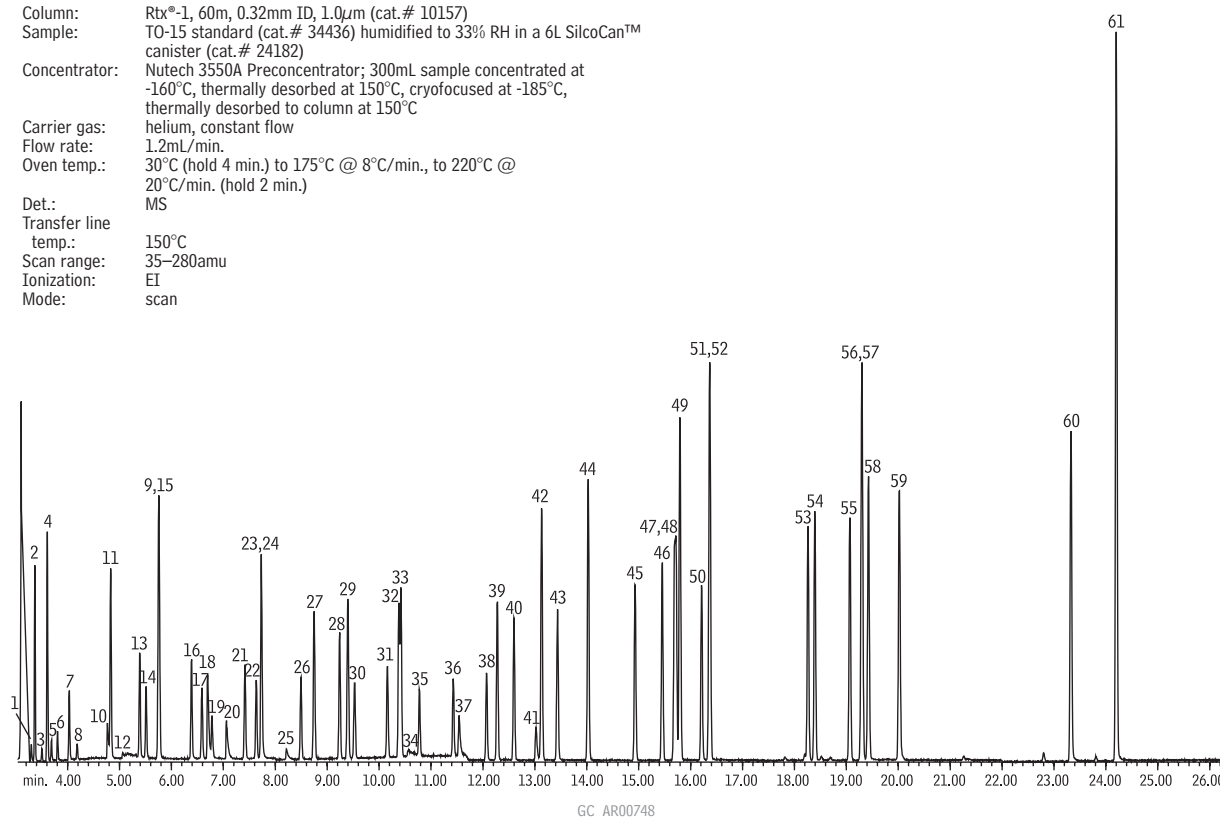


US EPA TO-15 Compounds

Rtx®-1

Column: Rtx®-1, 60m, 0.32mm ID, 1.0µm (cat.# 10157)
 Sample: TO-15 standard (cat.# 34436) humidified to 33% RH in a 6L SilcoCan™ canister (cat.# 24182)
 Concentrator: Nutech 3550A Preconcentrator; 300mL sample concentrated at -160°C, thermally desorbed at 150°C, cryofocused at -185°C, thermally desorbed to column at 150°C
 Carrier gas: helium, constant flow
 Flow rate: 1.2mL/min.
 Oven temp.: 30°C (hold 4 min.) to 175°C @ 8°C/min., to 220°C @ 20°C/min. (hold 2 min.)
 Det.: MS
 Transfer line temp.: 150°C
 Scan range: 35–280amu
 Ionization: EI
 Mode: scan



- | | | |
|--|---------------------------------------|-------------------------------|
| 1. propylene | 22. hexane | 43. 1,2-dibromoethane |
| 2. Freon®-12 (dichlorodifluoromethane) | 23. chloroform | 44. tetrachloroethylene |
| 3. chloromethane | 24. ethyl acetate | 45. chlorobenzene |
| 4. Freon®-114 (dichlorotetrafluoroethane) | 25. tetrahydrofuran | 46. ethylbenzene |
| 5. vinyl chloride | 26. 1,2-dichloroethane | 47. <i>p</i> -xylene |
| 6. 1,3-butadiene | 27. 1,1,1-trichloroethane | 48. <i>m</i> -xylene |
| 7. bromomethane | 28. benzene | 49. bromoform |
| 8. chloroethane | 29. carbon tetrachloride | 50. styrene |
| 9. carbon disulfide | 30. cyclohexane | 51. <i>o</i> -xylene |
| 10. acetone | 31. 1,2-dichloropropane | 52. 1,1,2,2-tetrachloroethane |
| 11. Freon®-11 (trichlorofluoromethane) | 32. trichloroethylene | 53. 4-ethyltoluene |
| 12. isopropyl alcohol | 33. bromodichloromethane | 54. 1,3,5-trimethylbenzene |
| 13. 1,1-dichloroethene | 34. 1,4-dioxane | 55. 1,2,4-trimethylbenzene |
| 14. methylene chloride | 35. heptane | 56. 1,3-dichlorobenzene |
| 15. Freon®-113 (1,1,2-trichloro-1,2,2-trifluoroethane) | 36. <i>cis</i> -1,3-dichloropropene | 57. benzyl chloride |
| 16. <i>trans</i> -1,2-dichloroethene | 37. methyl isobutyl ketone | 58. 1,4-dichlorobenzene |
| 17. 1,1-dichloroethane | 38. <i>trans</i> -1,3-dichloropropene | 59. 1,2-dichlorobenzene |
| 18. methyl <i>tert</i> -butyl ether | 39. 1,1,2-trichloroethane | 60. 1,2,4-trichlorobenzene |
| 19. vinyl acetate | 40. toluene | 61. hexachloro-1,3-butadiene |
| 20. methyl ethyl ketone | 41. methyl butyl ketone | |
| 21. <i>cis</i> -1,2-dichloroethene | 42. dibromochloromethane | |

Searching for a chromatogram?

www.restek.com