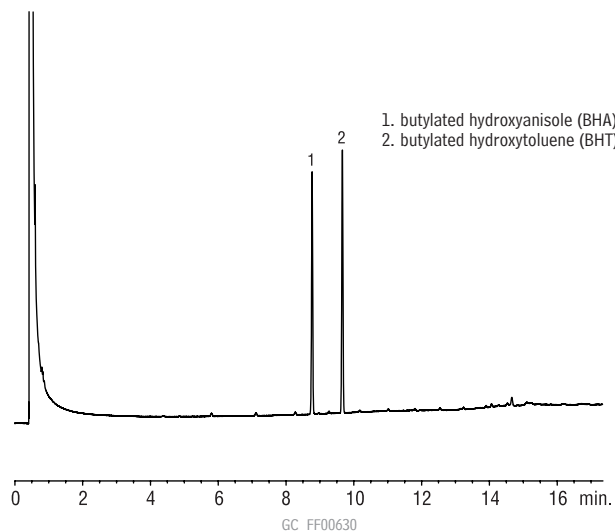


**BHA and BHT**  
**Rtx®-50**



Column: Rtx®-50, 30m, 0.53mm ID, 0.50µm (cat.# 10540)  
 Sample: 50ppm each in methanol  
 Inj.: 1.0µL direct, gooseneck splitless inlet liner, 4mm (cat.# 20798)  
 Inj. temp.: 280°C  
 Carrier gas: helium, constant pressure  
 Linear velocity: 60cm/sec. @ 50°C  
 Oven temp.: 50°C to 240°C @15°C/min. (hold 3 min.)  
 Det.: FID @ 280°C

Searching for a chromatogram?  
[www.restek.com](http://www.restek.com)

GC APPLICATIONS | FOODS, FLAVORS, & FRAGRANCES

**Tocopherols and Tocotrienols**  
**Rtx®-20**

