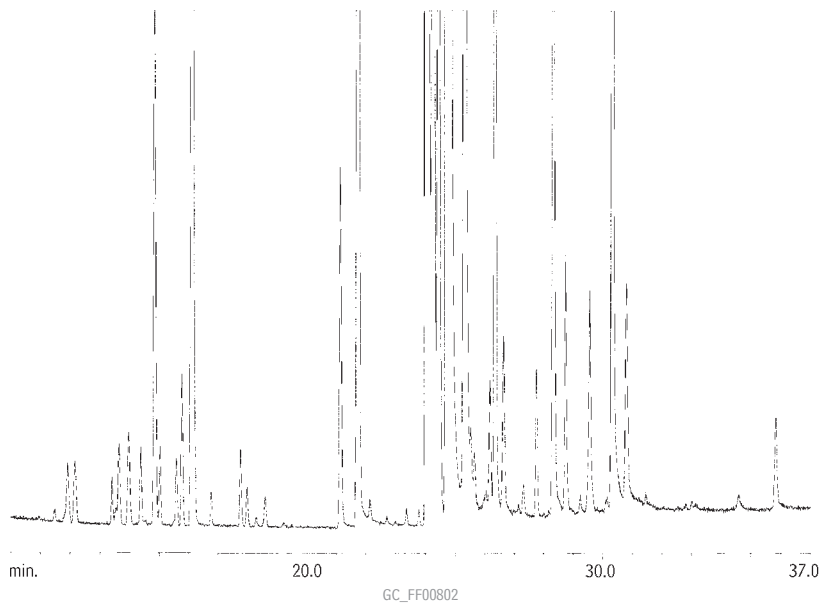


Chiral Separations

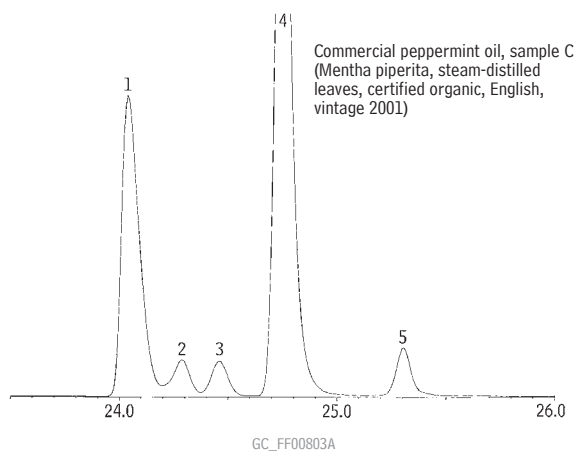
Commercial Peppermint Oil Rt™-γDEXsm

Commercial peppermint oil, sample B



Column: Rt™-γDEXsm, 30m, 0.25mm ID, 0.25μm (cat.# 13113)
 Inj.: 1.0μL neat, split (split ratio 1:150)
 Inj. temp.: 230°C
 Carrier gas: helium, constant pressure
 Flow rate: 35cm/sec. at 100°C
 Oven temp.: 40°C to 120°C @ 5°C/min. to 135°C @ 3°C/min. to 200°C @ 5°C/min.
 Det: MS
 Transfer line temp.: 200°C
 Scan range: 40-300amu
 Ionization: EI
 Mode: scan

1. menthone
2. menthol
3. menthone
4. menthol
5. menthyl acetate



free literature

Request **A Guide to the Analysis of Chiral Compounds by GC** for more information about chiral separations.

Many example chromatograms in our 24-page chiral analysis guide will help you find the best chiral column, or columns, for your application.

Call Restek at **800-356-1688** or **814-353-1300, ext. 5**, or contact your Restek representative, to request your free copy!

Technical Guide
 lit. cat.# 59889