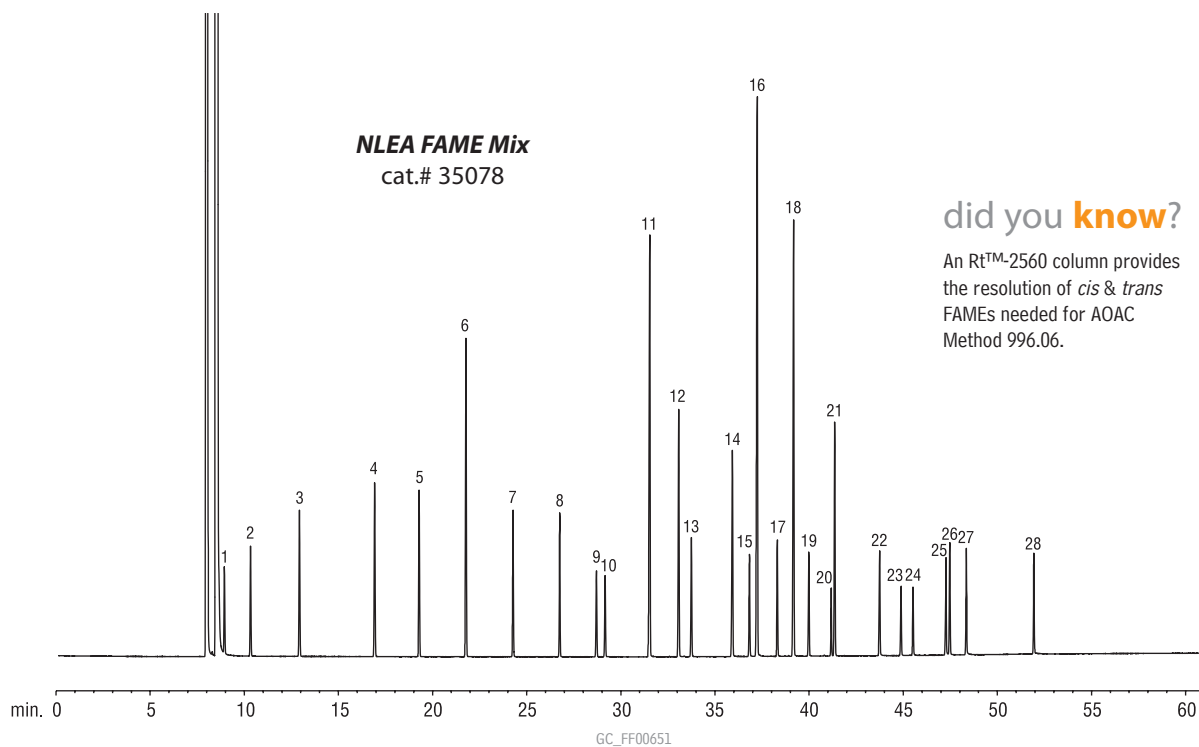


## FAMES (NLEA Mix)

Rt™-2560



## did you know?

An Rt™-2560 column provides the resolution of *cis* & *trans* FAMES needed for AOAC Method 996.06.

Column: Rt™-2560, 100m, 0.25mm ID, 0.20µm (cat.# 13199)  
 Sample: NLEA FAME Mix (cat.# 35078), 30mg/mL  
 total FAMES in methylene chloride  
 Inj.: 1.0µL split (split ratio 100:1),  
 4mm inlet liner (cat.# 20814)  
 Inj. temp.: 225°C  
 Carrier gas: hydrogen, constant flow  
 Flow rate: 1.2mL/min.  
 Oven temp.: 100°C (4 min. hold) to 240°C @ 3°C/min. (10 min. hold)  
 Det.: FID @ 250°C

1. C4:0 methyl butyrate
2. C6:0 methyl hexanoate
3. C8:0 methyl octanoate
4. C10:0 methyl decanoate
5. C11:0 methyl undecanoate
6. C12:0 methyl laurate
7. C13:0 methyl tridecanoate
8. C14:0 methyl myristate
9. C14:1 methyl myristoleate (*cis*-9)
10. C15:0 methyl pentadecanoate

11. C16:0 methyl palmitate
12. C16:1 methyl palmitoleate (*cis*-9)
13. C17:0 methyl heptadecanoate
14. C18:0 methyl stearate
15. C18:1 methyl elaidate (*trans*-9)
16. C18:1 methyl oleate (*cis*-9)
17. C18:2 methyl linoelaidate (*trans*-9,12)
18. C18:2 methyl linoleate (*cis*-9,12)
19. C20:0 methyl arachidate
20. C20:1 methyl eicosenoate (*cis*-11)

21. C18:3 methyl linolenate (*cis*-9,12,15)
22. C22:0 methyl behenate
23. C22:1 methyl erucate (*cis*-13)
24. C23:0 methyl tricosanoate
25. C24:0 methyl lignocerate
26. C20:5 methyl eicosapentaenoate (*cis*-5,8,11,14,17)
27. C24:1 methyl nervonate (*cis*-15)
28. C22:6 methyl docosahexaenoate (*cis*-4,7,10,13,16,19)