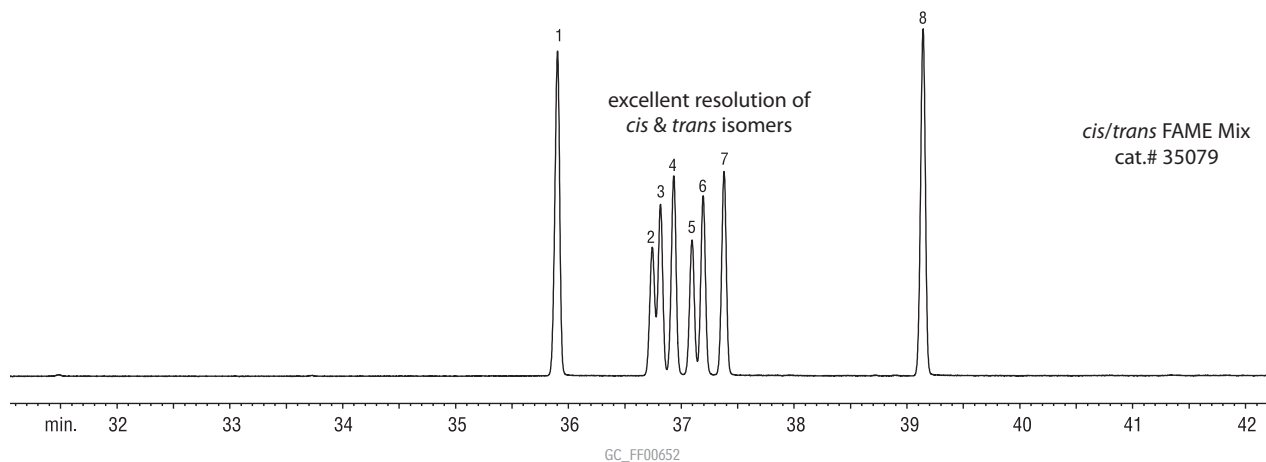


FAMES (cis/trans isomers)

Rt™-2560

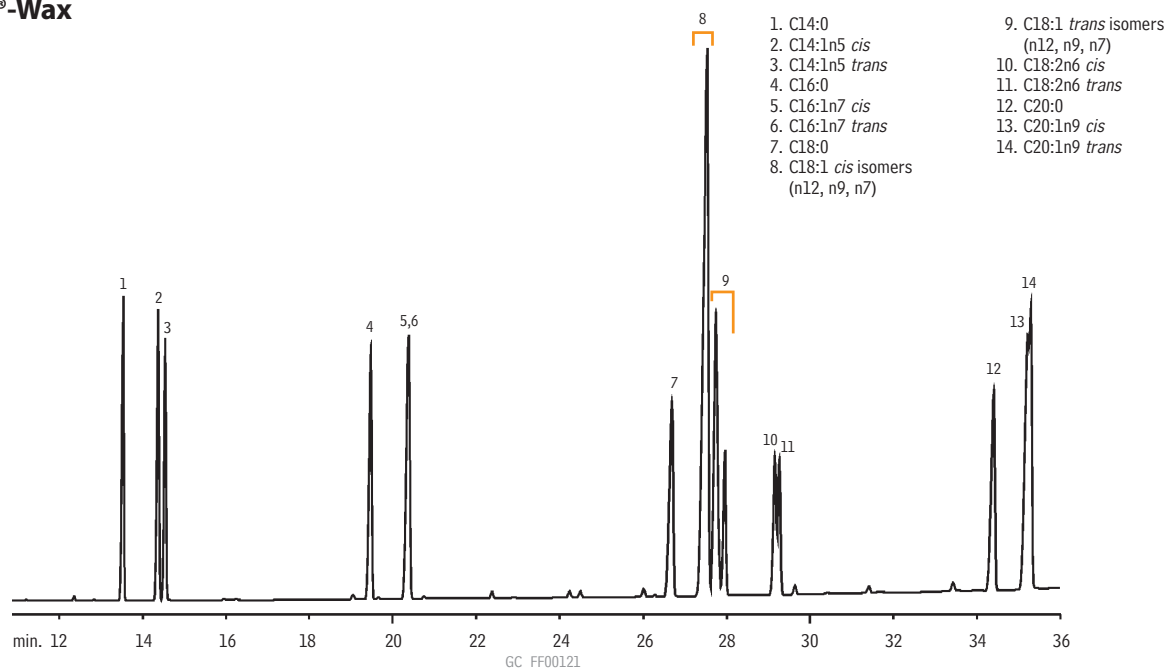


Column: Rt™-2560, 100m, 0.25mm ID, 0.2µm (cat.# 13199)  
 Sample: cis/trans FAME Mix (cat.# 35079), 10mg/mL total FAMES in methylene chloride  
 Inj.: 1.0µL split (split ratio 20:1), 4mm inlet liner (cat.# 20814)  
 Inj. temp.: 225°C  
 Carrier gas: hydrogen, constant flow  
 Flow rate: 1.2mL/min.  
 Oven temp.: 100°C (4 min. hold) to 240°C @ 3°C/min. (10 min. hold)  
 Det.: FID @ 250°C

Compound	% in Mix
1. C18:0 methyl stearate	20.0
2. C18:1 methyl petroselaidate (trans-6)	8.0
3. C18:1 methyl elaidate (trans-9)	10.0
4. C18:1 methyl transvacenate (trans-11)	12.0
5. C18:1 methyl petroselinate (cis-6)	8.0
6. C18:1 methyl oleate (cis-9)	10.0
7. C18:1 methyl vaccenate (cis-11)	12.0
8. C18:2 methyl linoleate (cis-9,12)	20.0

FAMES (cis/trans isomers)

Rtx®-Wax



Column: Rtx®-Wax, 60m, 0.25mm ID, 0.25µm (cat.#12426)  
 On-column conc.: 40–75ng.  
 Oven temp.: 165°C to 250°C @ 2°C/min.  
 Inj./det. temp.: 220°C/250°C  
 Carrier gas: helium  
 Linear velocity: 20cm/sec. set @ 165°C  
 Split ratio: 50:1