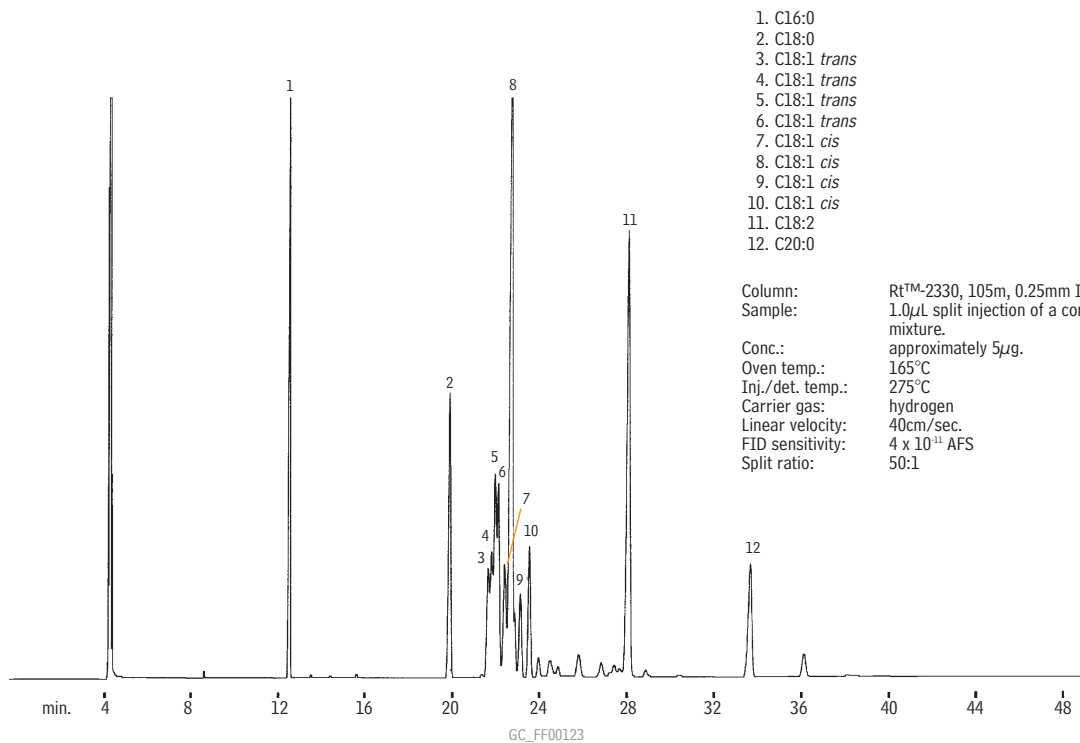


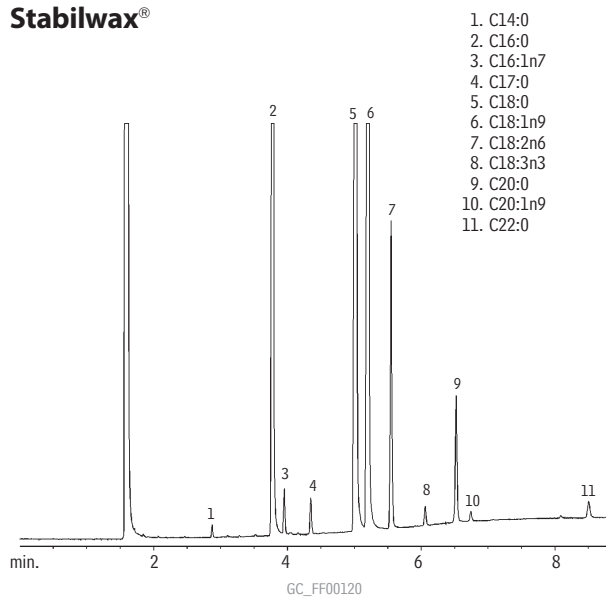
### FAMES (Commercial Margarine) Rt™-2330



1. C16:0
2. C18:0
3. C18:1 *trans*
4. C18:1 *trans*
5. C18:1 *trans*
6. C18:1 *trans*
7. C18:1 *cis*
8. C18:1 *cis*
9. C18:1 *cis*
10. C18:1 *cis*
11. C18:2
12. C20:0

Column: Rt™-2330, 105m, 0.25mm ID, 0.20µm (cat.# 10729)  
 Sample: 1.0µL split injection of a commercial margarine mixture.  
 Conc.: approximately 5µg.  
 Oven temp.: 165°C  
 Inj./det. temp.: 275°C  
 Carrier gas: hydrogen  
 Linear velocity: 40cm/sec.  
 FID sensitivity: 4 x 10<sup>-11</sup> AFS  
 Split ratio: 50:1

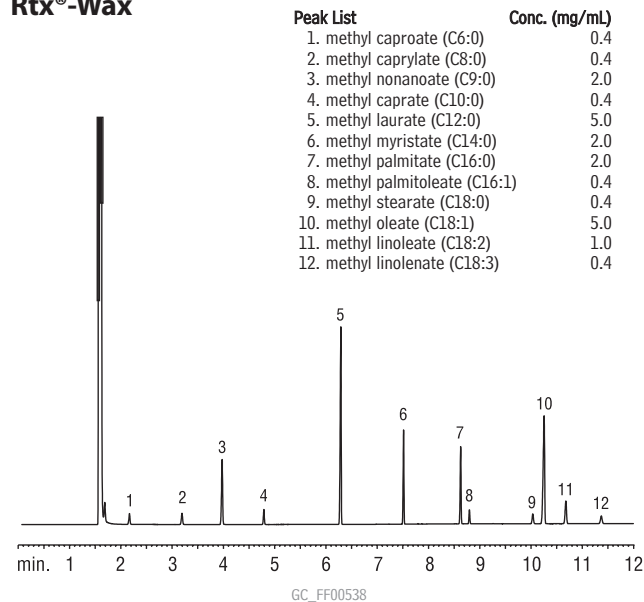
### FAMES (Cocoa Butter) Stabilwax®



1. C14:0
2. C16:0
3. C16:1n7
4. C17:0
5. C18:0
6. C18:1n9
7. C18:2n6
8. C18:3n3
9. C20:0
10. C20:1n9
11. C22:0

Column: Stabilwax®, 30m, 0.25mm ID, 0.25µm (cat.# 10623)  
 Sample: 1.0µL split injection of a FAME reference standard for cocoa butter.  
 Oven temp.: 200°C to 250°C @ 8°C/min. (hold 3 min.)  
 Inj./det. temp.: 250°C  
 Carrier gas: hydrogen  
 Linear velocity: 31.4cm/sec. set @ 200°C  
 FID sensitivity: 8 x 10<sup>-11</sup> AFS  
 Split ratio: 45:1

### FAMES (Saw Palmetto) Rtx®-Wax



Peak List	Conc. (mg/mL)
1. methyl caproate (C6:0)	0.4
2. methyl caprylate (C8:0)	0.4
3. methyl nonanoate (C9:0)	2.0
4. methyl caprate (C10:0)	0.4
5. methyl laurate (C12:0)	5.0
6. methyl myristate (C14:0)	2.0
7. methyl palmitate (C16:0)	2.0
8. methyl palmitoleate (C16:1)	0.4
9. methyl stearate (C18:0)	0.4
10. methyl oleate (C18:1)	5.0
11. methyl linoleate (C18:2)	1.0
12. methyl linolenate (C18:3)	0.4

Column: Rtx®-Wax, 30m, 0.25mm, 0.25µm (cat.# 12423)  
 Sample: 1µL split injection of saw palmetto standard  
 Conc.: see peak list  
 Oven temp.: 120°C (hold 3 min.) to 220°C at 20°C/min. (hold 12 min.)  
 Inj./det. temp.: 250°C/300°C  
 Carrier gas: helium  
 Linear velocity: 1mL/min. (34 cm/sec.)  
 Split ratio: 100:1