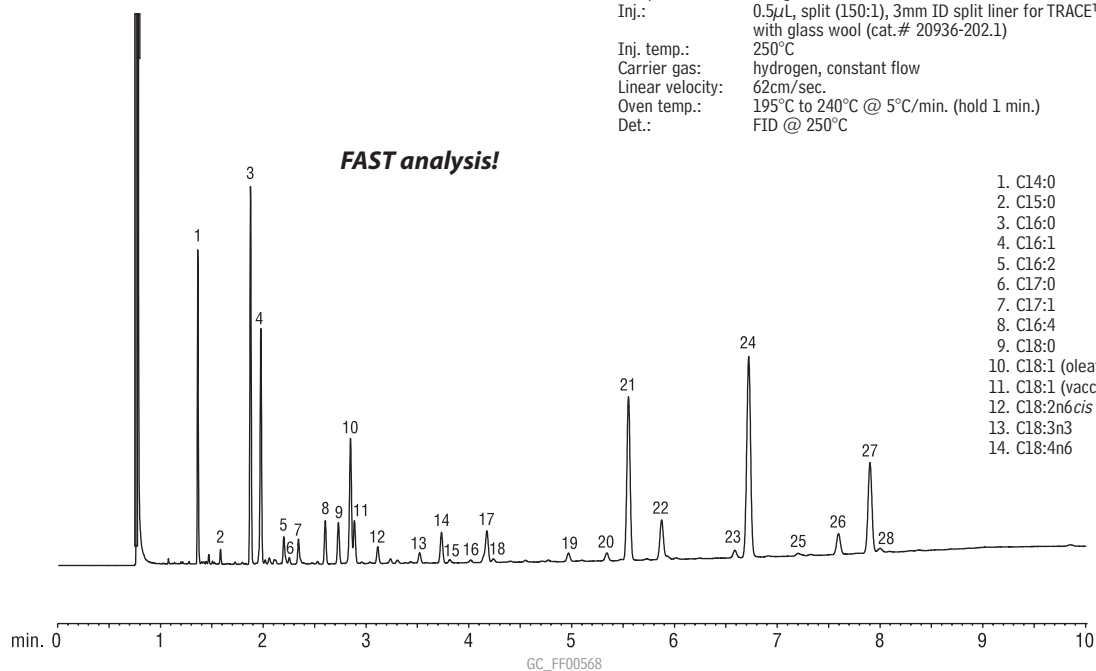


**FAMEs (Marine Oil Standard)  
FAMEWAX**

Column: FAMEWAX, 30m, 0.32mm ID, 0.25µm (cat.# 12498)  
 Sample: 12mg/mL total FAMEs  
 Inj.: 0.5µL, split (150:1), 3mm ID split liner for TRACE™ Series GCs, packed with glass wool (cat.# 20936-202.1)  
 Inj. temp.: 250°C  
 Carrier gas: hydrogen, constant flow  
 Linear velocity: 62cm/sec.  
 Oven temp.: 195°C to 240°C @ 5°C/min. (hold 1 min.)  
 Det.: FID @ 250°C

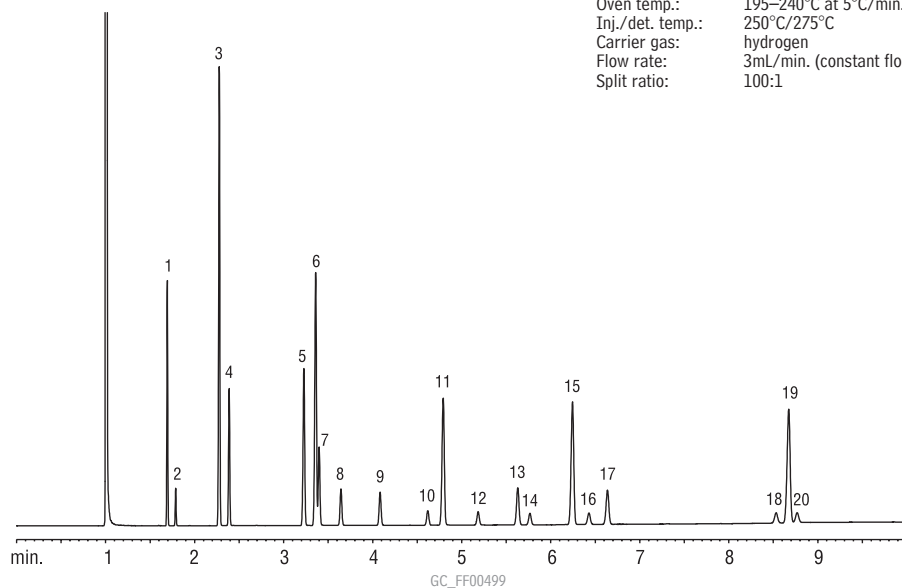
**FAST analysis!**



- |                       |                |
|-----------------------|----------------|
| 1. C14:0              | 15. C18:4n3    |
| 2. C15:0              | 16. C20:0      |
| 3. C16:0              | 17. C20:1n7    |
| 4. C16:1              | 18. C20:1n9    |
| 5. C16:2              | 19. C20:4n6    |
| 6. C17:0              | 20. C20:4n3    |
| 7. C17:1              | 21. C20:5n3    |
| 8. C16:4              | 22. C22:1n7    |
| 9. C18:0              | 23. C21:5n3    |
| 10. C18:1 (oleate)    | 24. C23:0 (IS) |
| 11. C18:1 (vaccenate) | 25. C22:5n6    |
| 12. C18:2n6 cis       | 26. C22:5n3    |
| 13. C18:3n3           | 27. C22:6n3    |
| 14. C18:4n6           | 28. C24:1      |

**FAMEs (Marine Oil Standard)  
FAMEWAX**

Column: FAMEWAX, 30m, 0.32mm ID, 0.25µm (cat.# 12498)  
 Inj.: 1µL  
 Conc.: 10,000µg/mL in isooctane (total FAMEs; see breakdown in peak list)  
 Oven temp.: 195–240°C at 5°C/min., 1 min. hold  
 Inj./det. temp.: 250°C/275°C  
 Carrier gas: hydrogen  
 Flow rate: 3mL/min. (constant flow)  
 Split ratio: 100:1



Peak List	Conc. (µg/mL)
1. C14:0	600
2. C14:1	100
3. C16:0	1600
4. C16:1	500
5. C18:0	800
6. C18:1 (oleate)	1300
7. C18:1 (vaccenate)	400
8. C18:2	200
9. C18:3	200
10. C20:0	100
11. C20:1	900
12. C20:2	100
13. C20:4	300
14. C20:3	100
15. C20:5	1000
16. C22:0	100
17. C22:1	300
18. C24:0	100
19. C22:6	1200
20. C24:1	100

GC APPLICATIONS | FOODS, FLAVORS, & FRAGRANCES

