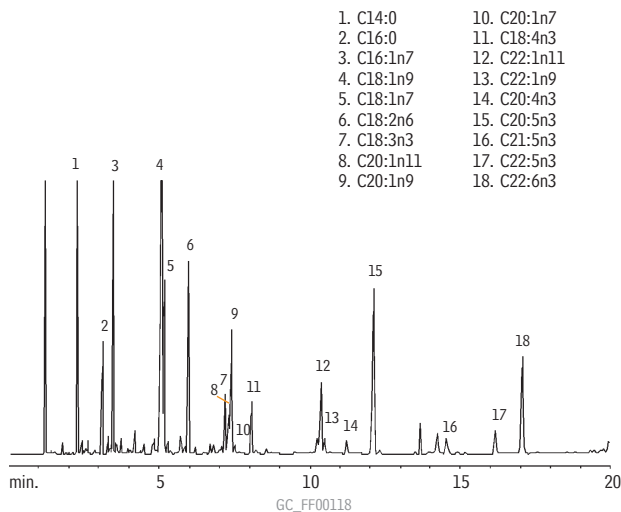


## FAMES (PUFA, marine source)

## Rt™-2330

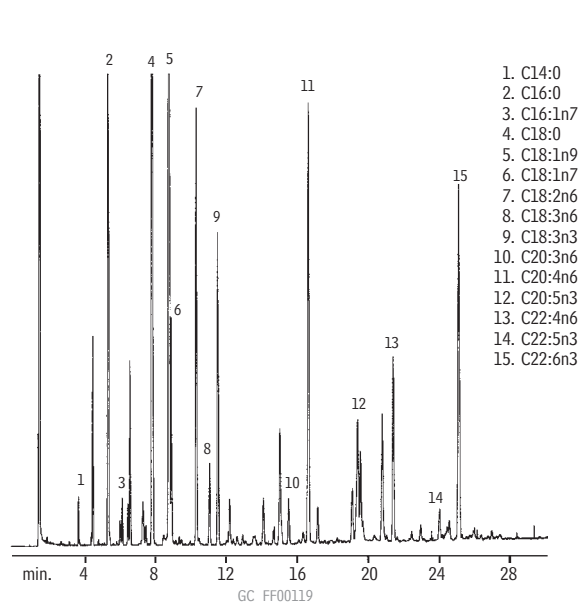


- |             |              |
|-------------|--------------|
| 1. C14:0    | 10. C20:1n7  |
| 2. C16:0    | 11. C18:4n3  |
| 3. C16:1n7  | 12. C22:1n11 |
| 4. C18:1n9  | 13. C22:1n9  |
| 5. C18:1n7  | 14. C20:4n3  |
| 6. C18:2n6  | 15. C20:5n3  |
| 7. C18:3n3  | 16. C21:5n3  |
| 8. C20:1n11 | 17. C22:5n3  |
| 9. C20:1n9  | 18. C22:6n3  |

Column: Rt™-2330, 30m, 0.25mm ID, 0.20µm (cat.# 10723)  
 Sample: 0.5µL split injection of a PUFA mix  
 Oven temp.: 160°C to 225°C @ 2°C/min.  
 Inj./det. temp.: 225°C/250°C  
 Carrier gas: hydrogen  
 Linear velocity: 45cm/sec. set @ 160°C  
 FID sensitivity: 8 x 10<sup>-11</sup> AFS  
 Split ratio: 35:1

## FAMES (PUFA, animal source)

## Rt™-2330

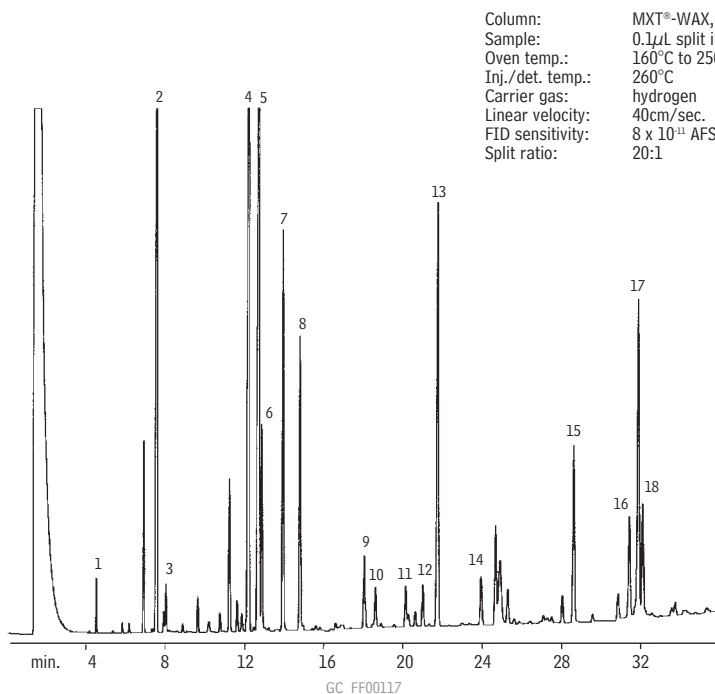


- |            |             |
|------------|-------------|
| 1. C14:0   | 10. C20:3n6 |
| 2. C16:0   | 11. C20:4n6 |
| 3. C16:1n7 | 12. C20:5n3 |
| 4. C18:0   | 13. C22:4n6 |
| 5. C18:1n9 | 14. C22:5n3 |
| 6. C18:1n7 | 15. C22:6n3 |
| 7. C18:2n6 |             |
| 8. C18:3n3 |             |
| 9. C18:3n3 |             |

Column: Rt™-2330, 30m, 0.32mm ID, 0.20µm (cat.# 10724)  
 Sample: 0.1µL split injection of PUFA 2 mix  
 Oven temp.: 160°C to 250°C @ 2°C/min. (hold 10 min.)  
 Inj./det. temp.: 260°C  
 Carrier gas: hydrogen  
 Linear velocity: 40cm/sec.  
 FID sensitivity: 8 x 10<sup>-11</sup> AFS  
 Split ratio: 20:1

## FAMES (PUFA, animal source)

## MXT®-WAX



Column: MXT®-WAX, 30m, 0.28mm ID, 0.25µm (cat.# 70624)  
 Sample: 0.1µL split injection of PUFA 2 mix  
 Oven temp.: 160°C to 250°C @ 2°C/min. (hold 10 min.)  
 Inj./det. temp.: 260°C  
 Carrier gas: hydrogen  
 Linear velocity: 40cm/sec.  
 FID sensitivity: 8 x 10<sup>-11</sup> AFS  
 Split ratio: 20:1

- |            |             |
|------------|-------------|
| 1. C14:0   | 10. C20:1n9 |
| 2. C16:0   | 11. C20:2n6 |
| 3. C16:1n7 | 12. C20:3n6 |
| 4. C18:0   | 13. C20:4n6 |
| 5. C18:1n9 | 14. C20:5n3 |
| 6. C18:1n7 | 15. C22:4n6 |
| 7. C18:2n6 | 16. C22:5n3 |
| 8. C18:3n3 | 17. C22:6n3 |
| 9. C18:4n3 | 18. C24:1n9 |