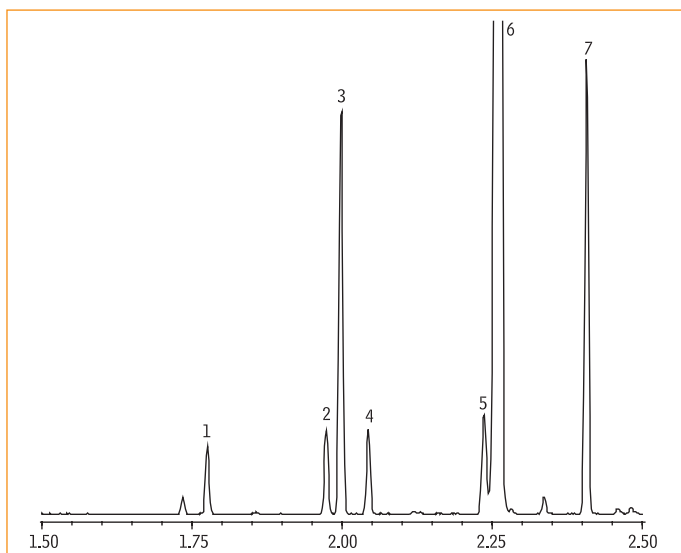


Bergamot Oil

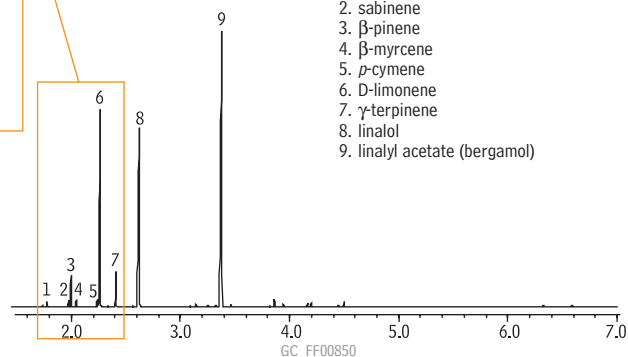
Fast GC/MS

Rtx®-5



Column: Rtx®-5, 10m, 0.10mm ID, 0.10 μ m (cat.# 41201)
 Sample: bergamot oil, 5% in acetone, 0.2 μ L injection
 Instrument: Shimadzu GCMS-QP2010
 Inj.: split/splitless, 280°C
 Injection mode: split, split ratio = 800:1
 Carrier gas: helium
 Flow control mode: constant linear velocity (60.0cm/sec.)
 Column inlet pressure: 421.5kPa @ 40°C
 Column oven: 40°C – 30°C/min. – 300°C
 Det.: Shimadzu QP 2010 MSD
 Interface: direct, 280°C
 Ionization: electron impact
 Mass range: 40-500amu

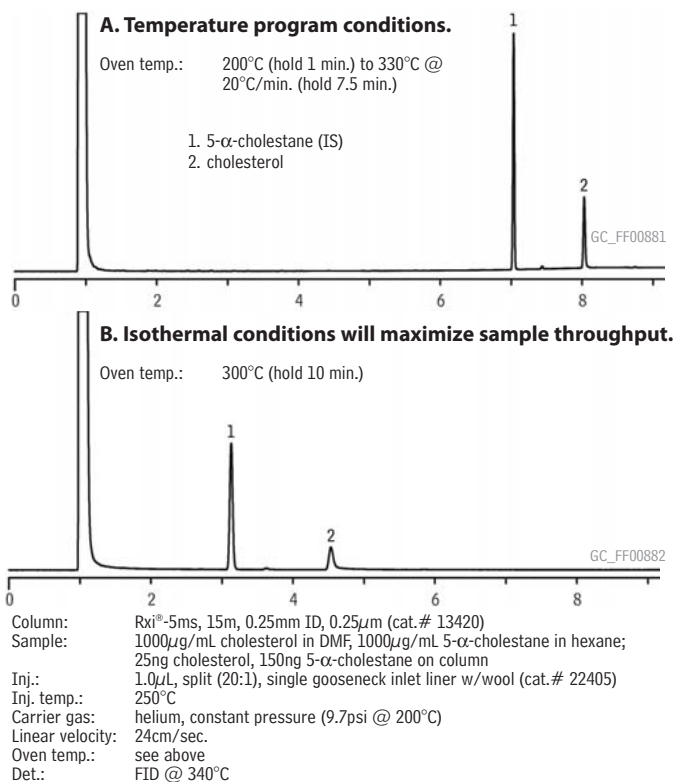
1. α -pinene
2. sabinene
3. β -pinene
4. β -myrcene
5. p -cymene
6. D-limonene
7. γ -terpinene
8. linalol
9. linalyl acetate (bergamol)



Underivatized Cholesterol

Rxi®-5ms

new!



Derivatized Cholesterol

Rxi®-5ms

new!

