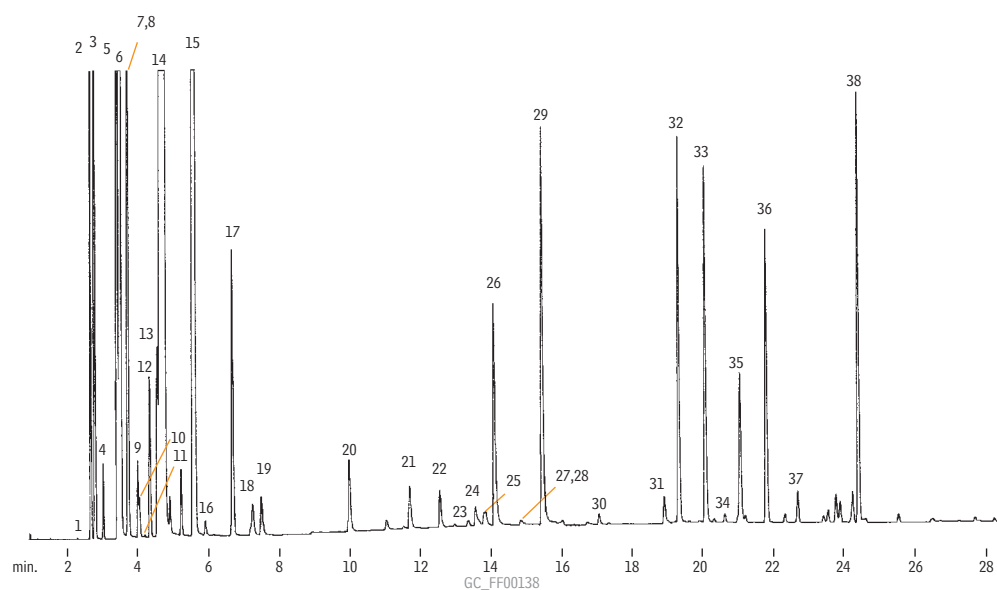


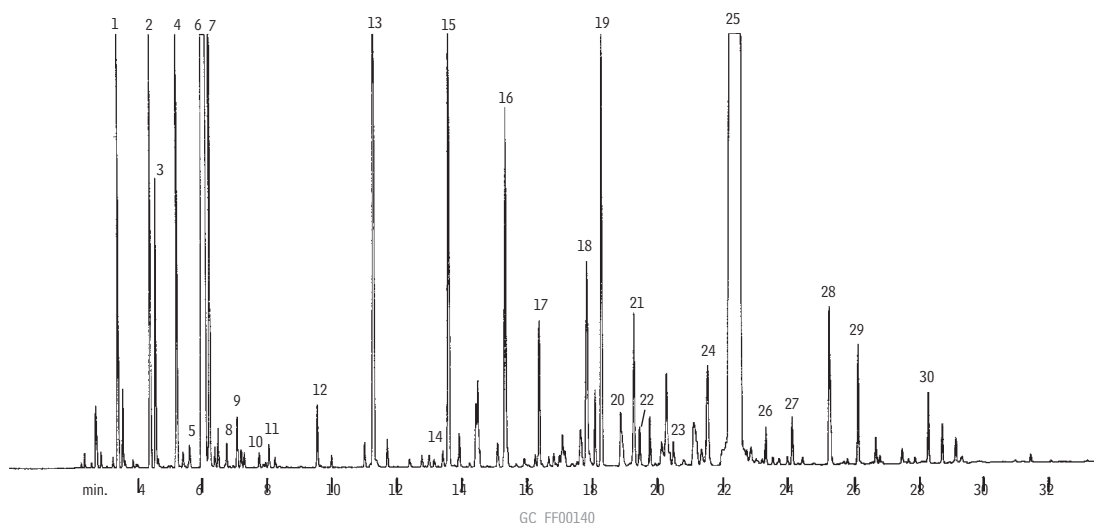
Lemon Oil Rtx®-5



Column: Rtx®-5, 30m, 0.32mm ID, 0.25µm (cat.# 10224)
 Sample: Wet needle split injection of a neat lemon oil
 Oven temp.: 75°C (hold 8 min.) to 250°C @ 4°C/min.
 Inj./det. temp.: 250°C
 Carrier gas: hydrogen
 Linear velocity: 40cm/sec. (flow rate: 3.2cc/min.)
 FID sensitivity: 2 x 10¹¹ AFS
 Split ratio: 100:1

1. heptanol
2. α-thujene
3. α-pinene
4. camphene
5. sabinene
6. β-pinene
7. 6-methyl-5-hepten-2-one
8. myrcene
9. octanal
10. α-phellandrene
11. 3-carene
12. α-terpinene
13. p-cymene
14. limonene
15. γ-terpinene
16. octanol
17. terpinolene
18. linalool
19. nonanal
20. citronellal
21. terpinene-4-ol
22. α-terpineol
23. decanol
24. octyl acetate
25. nerol
26. neral
27. carvone
28. geraniol
29. geranial
30. nonyl acetate
31. citronellyl acetate
32. neryl acetate
33. geranyl acetate
34. dodecanal
35. β-caryophyllene
36. trans-α-bergamotene
37. α-humulene
38. β-bisabolene

Spearmint Oil (Native) Stabilwax®



Column: Stabilwax®, 60m, 0.25mm ID, 0.25µm (cat.# 10626)
 Sample: 0.2µL split injection of a neat spearmint oil
 Oven temp.: 75°C (hold 4 min.) to 200°C @ 4°C/min. (hold 10 min.)
 Inj./det. temp.: 250°C
 Carrier gas: hydrogen
 Linear velocity: 40cm/sec. set @ 160°C
 FID sensitivity: 4 x 10¹¹ AFS
 Split ratio: 100:1

1. α-pinene
2. β-pinene
3. sabinene
4. myrcene
5. α-terpinene
6. l-limonene
7. 1,8-cineole
8. cis-ocimene
9. γ-terpinene
10. p-cymene
11. terpinolene
12. 3-octyl acetate
13. 3-octanol
14. l-menthone
15. trans-sabinenehydrate
16. β-bourbonene
17. linalool
18. terpinene-4-ol
19. β-caryophyllene
20. dihydrocarvone

21. trans-dihydrocarvyl acetate
22. β-farnesene
23. α-terpineol
24. germacrene-Δ
25. carvone
26. cis-carvyl acetate
27. trans-carveol
28. cis-carveol
29. cis-jasmone
30. viridiflorol