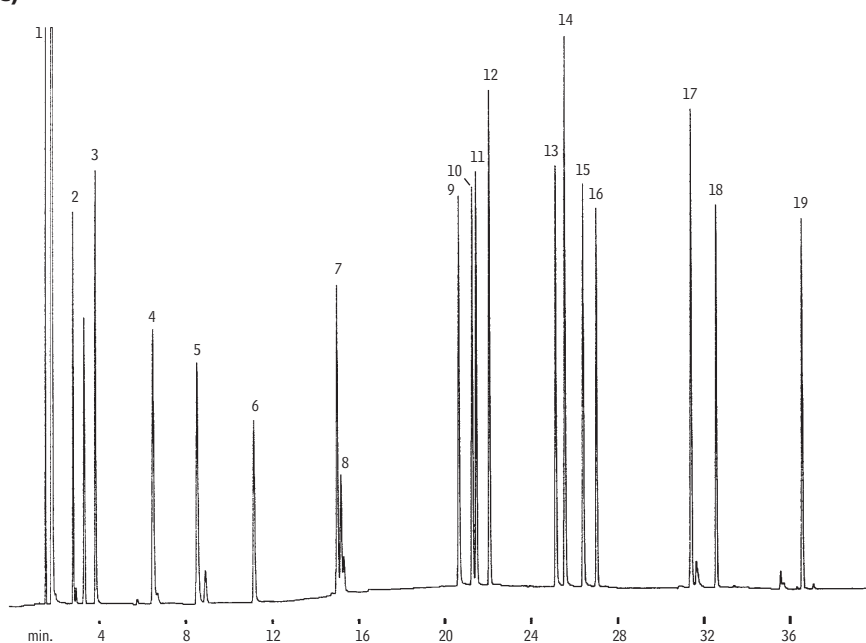


Mushroom Aroma (Synthetic)

Rtx®-20

1. acetone
2. ethyl acetate
3. 1-butanol
4. 3-methyl-1-butanol
5. 1-pentanol
6. hexanal
7. furfural
8. amyl acetate
9. 1-octen-3-ol
10. 3-octanol
11. 3-octanone
12. benzaldehyde
13. octyl alcohol
14. benzyl alcohol
15. phenylacetaldehyde
16. nonanal
17. α -terpineol
18. 2,4-nonadienal
19. 2,4-decadienal



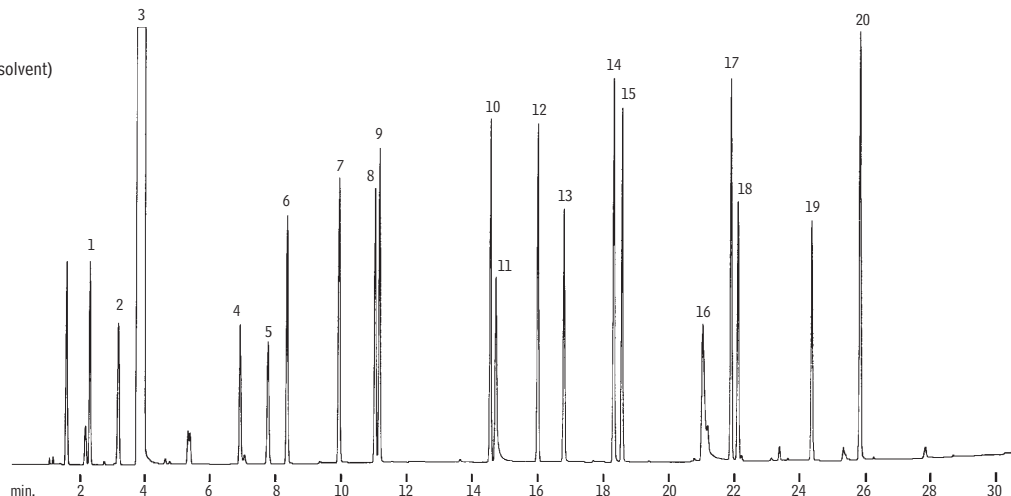
GC_FF00142

Column: Rtx®-20, 30m, 0.32mm ID, 1.0 μ m (cat.# 10354)
 Sample: 1.0 μ L split injection of a synthetic mushroom aroma
 Conc.: 10ng per component
 Oven temp.: 45°C (hold 8 min.) to 250°C @ 4°C/min.
 Inj./det. temp.: 260°C
 Carrier gas: hydrogen
 Linear velocity: 40cm/sec.
 FID sensitivity: 4 x 10⁻¹¹ AFS
 Split ratio: 100:1

Mushroom Aroma (Synthetic)

Stabilwax®

1. acetone
2. ethyl acetate
3. methylene chloride (solvent)
4. hexanal
5. amyl acetate
6. 1-butanol
7. 3-methyl-1-butanol
8. 1-pentanol
9. 3-octanone
10. 3-octanol
11. nonanal
12. 1-octen-3-ol
13. furfural
14. benzaldehyde
15. octyl alcohol
16. phenylacetaldehyde
17. α -terpineol
18. 2,4-nonadienal
19. 2,4-decadienal
20. benzyl alcohol



GC_FF00143

Column: Stabilwax®, 30m, 0.32mm ID, 1.0 μ m (cat.# 10654)
 Sample: 1.0 μ L split injection of a synthetic mushroom aroma
 Conc.: 10ng per component
 Oven temp.: 40°C to 220°C @ 6°C/min.
 Inj./det. temp.: 260°C
 Carrier gas: hydrogen
 Linear velocity: 40cm/sec.
 FID sensitivity: 4 x 10⁻¹¹ AFS
 Split ratio: 100:1