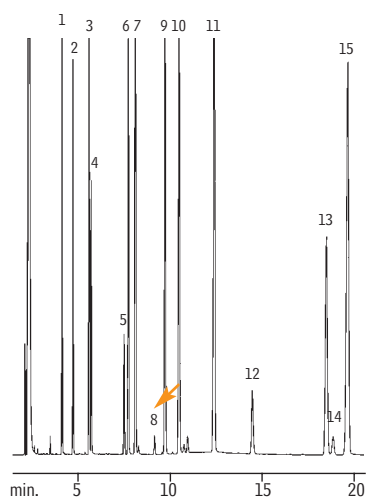


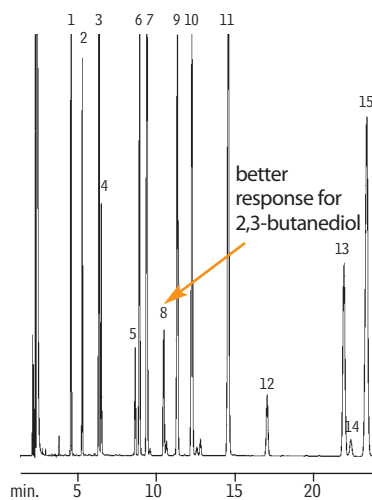
Flavor & Fragrance Compounds

Rt™-CW20M F&F

Carbowax®



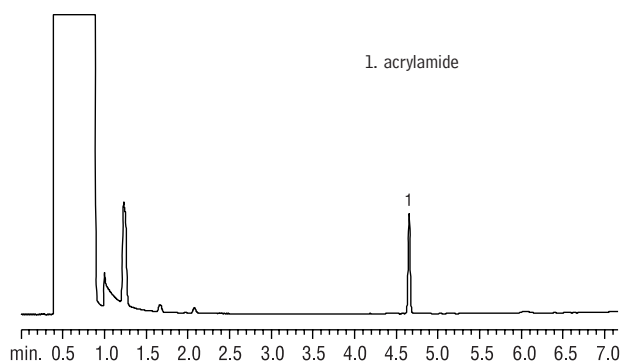
Rt™-CW20M F&F



1. methyl heptanoate
2. hexanol
3. methyl octanoate
4. nonanal
5. menthone
6. citronellal
7. methyl nonanoate
8. 2,3-butanediol
9. linalool
10. linalyl acetate
11. methyl decanoate
12. menthol
13. α -terpineol
14. γ -terpineol
15. methyl undecanoate

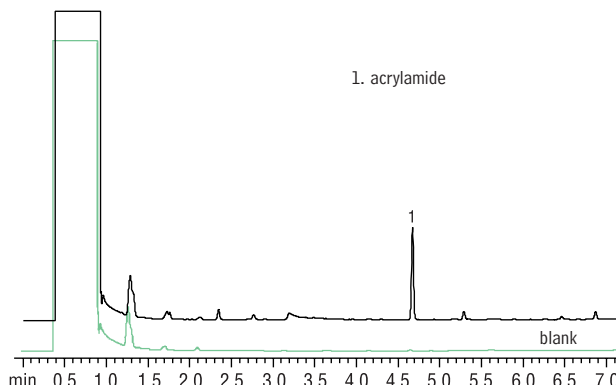
Columns: traditional Carbowax® 20M or Rt™-CW20M F&F, 50m, 0.32mm ID, 0.33 μ m, (cat.# 12539)
 Inj.: On-column injection of 5ng to 150ng each compound in methylene chloride, split 10:1
 Carrier gas: hydrogen, 40cm/sec.
 Inj./det. temp.: 220°C
 Oven temp.: 110°C

GC_FF00433

Acrylamide (Reference Standard)
Stabilwax®

GC_FF00642

Column: Stabilwax®, 15m, 0.53mm ID, 0.50 μ m (cat.# 10637)
 Sample: 25 μ g/mL acrylamide standard in water
 Inj.: 1.0 μ L, 0.5 min hold
 Liner: 2mm splitless with wool (cat.# 20830)
 Inj. temp.: 260°C
 Carrier gas: helium, constant pressure
 Linear velocity: 62cm/sec. @ 100°C
 Oven temp.: 100°C (hold 0.5 min.) to 200°C @ 15°C/min.
 Det.: FID @ 260°C

Acrylamide (Potato Chip Extract)
Stabilwax®

GC_FF00643

Column: Stabilwax®, 15m, 0.53mm ID, 0.50 μ m (cat.# 10637)
 Sample: 1g of potato chips spiked with 100 μ g acrylamide
 Inj.: 1.0 μ L, 0.5 min. hold
 Liner: 2mm splitless with wool (cat.# 20830)
 Inj. temp.: 260°C
 Carrier gas: helium, constant pressure
 Linear velocity: 62cm/sec. @ 100°C
 Oven temp.: 100°C (hold 0.5 min.) to 200°C @ 15°C/min.
 Det.: FID @ 260°C