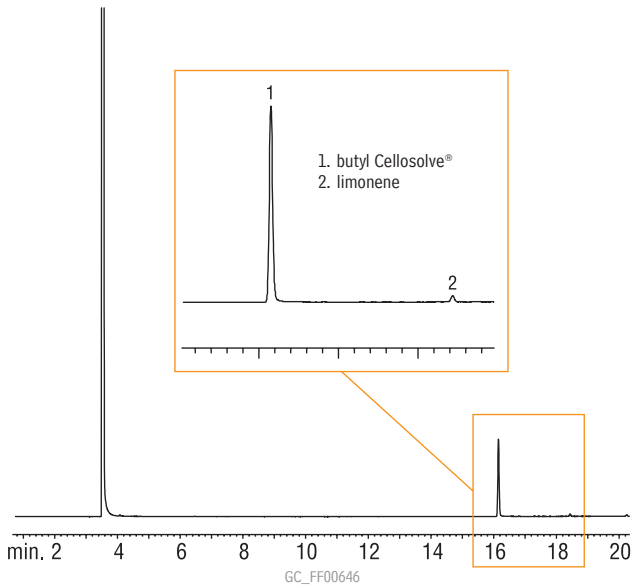
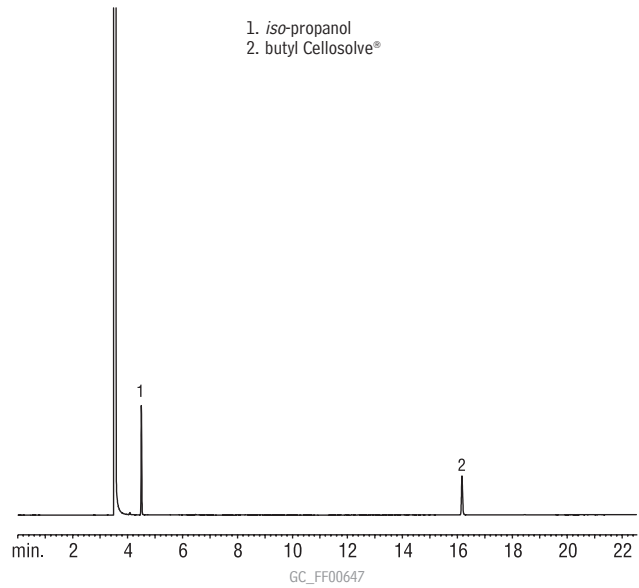


**Cleaning Solvents (All-Purpose Cleaner)
Rtx®-VMS**



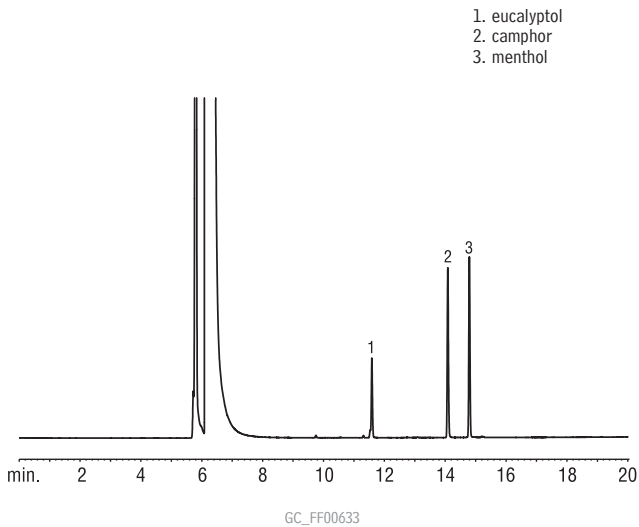
Column: Rtx®-VMS, 60m, 0.25mm ID, 1.4µm (cat.# 19916)
 Sample: approx. 5% cleaner in methanol
 Inj.: 1.0µL split (split ratio 100:1), 4mm inlet liner (cat.# 20814)
 Inj. temp.: 250°C
 Carrier gas: hydrogen, constant flow
 Flow rate: 1.5mL/min.
 Oven temp.: 60°C (1 min. hold) to 138°C @ 4°C/min. to 145°C @ 2°C/min. to 210°C @ 15°C/min. to 230°C @ 5°C/min.
 Det.: FID @ 250°C

**Cleaning Solvents (Glass Cleaner)
Rtx®-VMS**



Column: Rtx®-VMS, 60m, 0.25mm ID, 1.4µm (cat.# 19916)
 Sample: approx. 5% cleaner in methanol
 Inj.: 1.0µL split (split ratio 100:1), 4mm inlet liner (cat.# 20814)
 Inj. temp.: 250°C
 Carrier gas: hydrogen, constant flow
 Flow rate: 1.5mL/min.
 Oven temp.: 60°C (1 min. hold) to 138°C @ 4°C/min. to 145°C @ 2°C/min. to 210°C @ 15°C/min. to 230°C @ 5°C/min.
 Det.: FID @ 250°C

**Personal Care Product Fragrances
Rtx®-1**



Column: Rtx®-1, 60m, 0.25mm ID, 0.25µm (cat.# 10126)
 Sample: 130ppm eucalyptus oil, 250ppm camphor, 260ppm menthol in methanol
 Inj.: 1.0µL split (split ratio 20:1), 4mm inlet liner (cat.# 20814)
 Inj. temp.: 275°C
 Carrier gas: helium, constant flow
 Flow rate: 0.6mL/min.
 Oven temp.: 80°C to 180°C @ 5°C/min.
 Det.: FID @ 300°C

Searching for a chromatogram?
www.restek.com