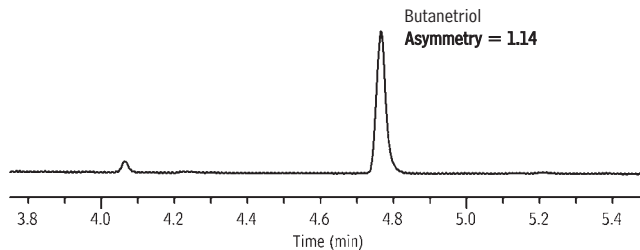
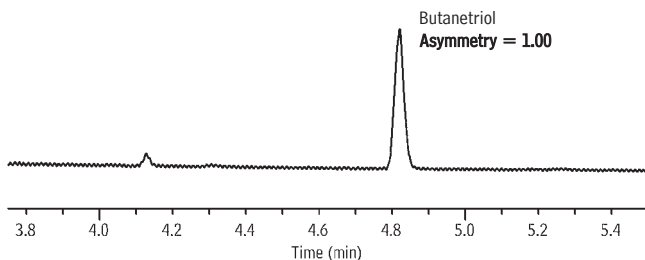


Biodiesel Oil (B100) Rtx®-Biodiesel TG

new!

A. Rtx®-Biodiesel TG
with Alumaseal™ Connector and
2 meters of 0.53mm ID Hydroguard™ tubing

B. Rtx®-Biodiesel TG
with Universal Press-Tight® Connector and
2 meters of 0.53mm ID Hydroguard™ tubing



GC_PC00905

Columns: A. Rtx®-Biodiesel TG, 10m, 0.32mm ID, 0.10µm connected to 2m x 0.53mm Hydroguard™ tubing using Alumaseal™ connector
B. Rtx®-Biodiesel TG, 10m, 0.32mm ID, 0.10µm connected to 2m x 0.53mm Hydroguard™ tubing using Universal Press-Tight® connector

Sample: Biodiesel (B100) with butanetriol at 12.5ppm (12.5ng on-column)

Inj.: 1µL, cool on-column injection

Inj. temp.: oven track mode

Carrier gas: hydrogen, constant flow 4cc/min.

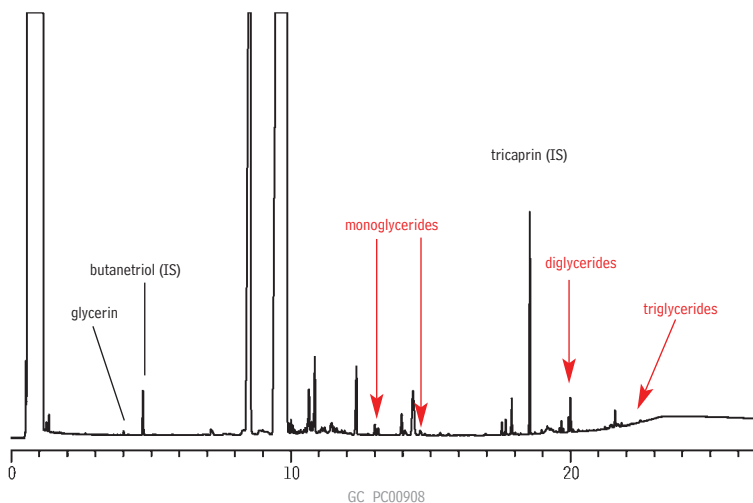
Linear velocity: 79cm/sec.

Oven temp.: 50°C (hold 1min.) to 180°C @ 15°C/min. to 230°C @ 7°C/min. to 380°C @ 30°C/min. (hold 5 min.)

Det.: FID @ 380°C

Biodiesel Oil (B100) and Internal Standards Rtx®-Biodiesel TG

new!



GC_PC00908

Column: Rtx®-Biodiesel TG, 10m, 0.32mm ID, 0.10µm connected to 2m x 0.53mm Hydroguard™ tubing using Alumaseal™ connector (cat.# 10291)

Sample: biodiesel oil (B100) plus monoolein, diolein, triolein, glycerin, butanetriol, tricaprin

Inj.: 1µL, cool on-column

Inj. temp.: oven track

Carrier gas: hydrogen, constant flow

Flow rate: 4mL/min.

Oven temp.: 50°C (hold 1 min.) to 180°C @ 15°C/min. to 230°C @ 7°C/min. to 380°C @ 30°C/min. (hold 5 min.)

Det.: FID @ 380°C