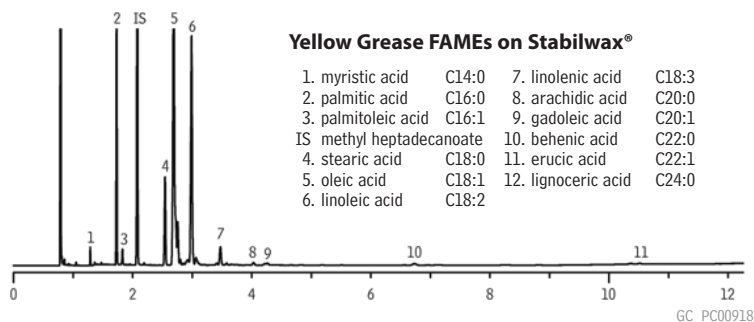
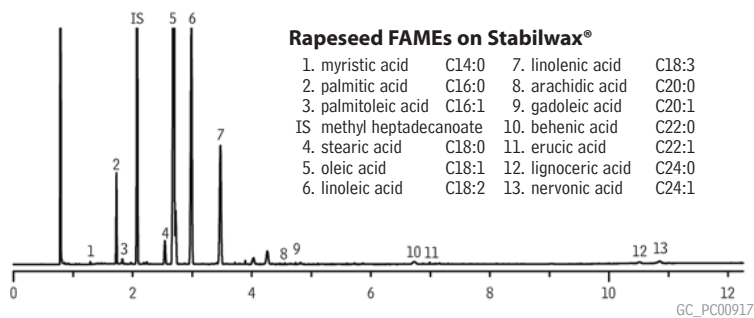
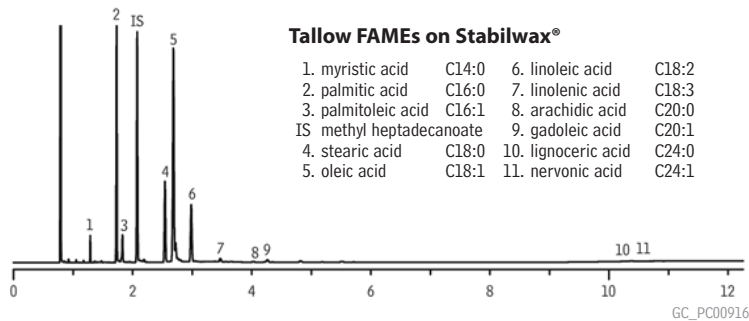
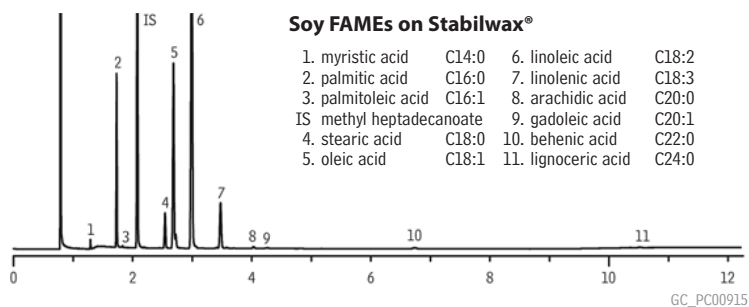


new!

FAMES in Biodiesel Oils Stabilwax®



Column: Stabilwax®, 30m, 0.32mm ID, 0.25µm (cat.# 10624)
 Sample: various sources of biodiesel (B100), prepared according to European Method EN 14103
 Inj.: 1.0µL split (split ratio 100:1), Cyclosplitter® inlet liner (cat.# 20706)
 Inj. temp.: 250°C
 Carrier gas: hydrogen, constant flow, 3mL/min.
 Linear velocity: 60cm/sec.
 Oven temp.: 210°C (hold 5 min.) to 230°C @ 20°C/min. (hold 5 min.)
 Det.: FID @ 250°C