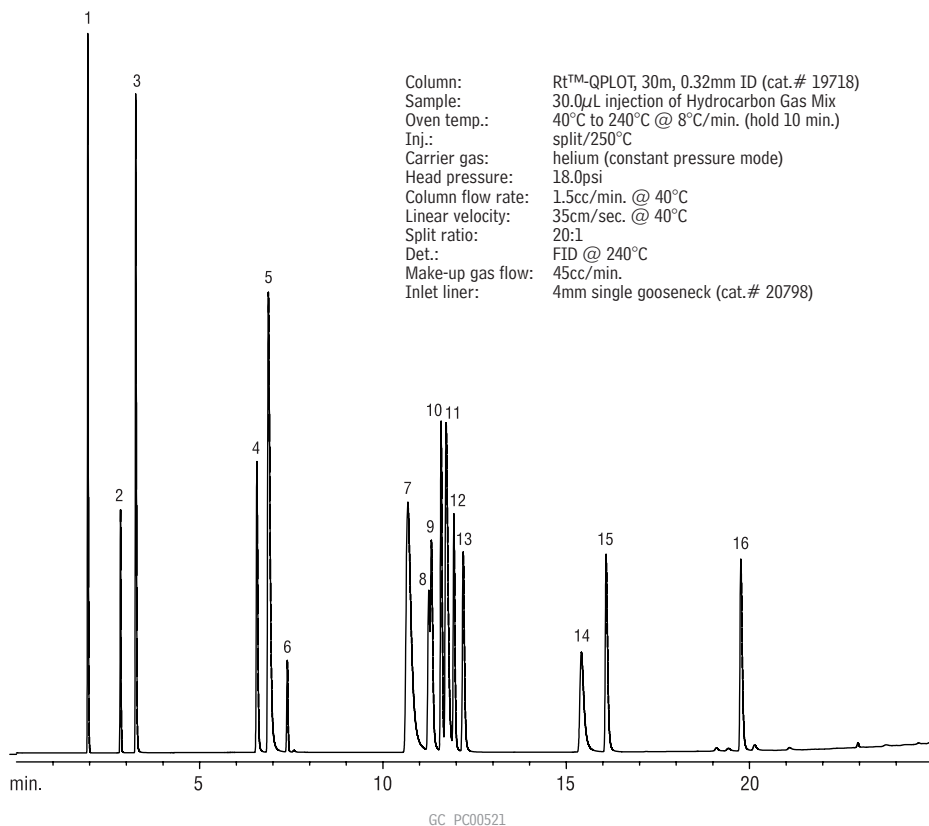


## Hydrocarbon Gases

### Rt™-QPLOT

(PLOT)

1. methane
2. ethene
3. ethane
4. propene
5. propane
6. propadiene
7. isobutane
8. 1,3-butadiene
9. 1-butene
10. isobutene
11. *n*-butane
12. *cis*-2-butene
13. *trans*-2-butene
14. isopentane
15. *n*-pentane
16. *n*-hexane



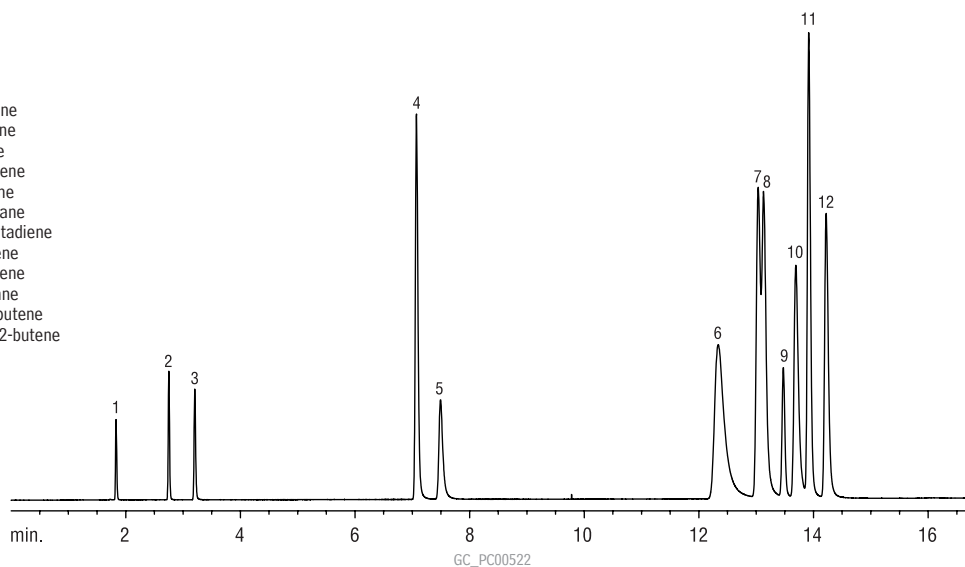
Column: Rt™-QPLOT, 30m, 0.32mm ID (cat.# 19718)  
 Sample: 30.0µL injection of Hydrocarbon Gas Mix  
 Oven temp.: 40°C to 240°C @ 8°C/min. (hold 10 min.)  
 Inj.: split/250°C  
 Carrier gas: helium (constant pressure mode)  
 Head pressure: 18.0psi  
 Column flow rate: 1.5cc/min. @ 40°C  
 Linear velocity: 35cm/sec. @ 40°C  
 Split ratio: 20:1  
 Det.: FID @ 240°C  
 Make-up gas flow: 45cc/min.  
 Inlet liner: 4mm single gooseneck (cat.# 20798)

## Hydrocarbon Gases

### Rt™-QPLOT

(PLOT)

1. methane
2. ethylene
3. ethane
4. propylene
5. propane
6. isobutane
7. 1,3-butadiene
8. 1-butene
9. isobutene
10. *n*-butane
11. *cis*-2-butene
12. *trans*-2-butene



Column: Rt™-QPLOT, 30m, 0.32mm ID (cat.# 19718)  
 Sample: 30.0µL injection of Hydrocarbon Gas Mix  
 Oven temp.: 35°C to 240°C @ 10°C/min. (hold 10 min.)  
 Injector: split/250°C  
 Carrier gas: helium (constant pressure mode)  
 Head pressure: 18.0psi  
 Column flow rate: 1.5cc/min. @ 40°C  
 Linear velocity: 35cm/sec. @ 40°C  
 Split ratio: 20:1  
 Det.: FID @ 240°C  
 Make-up gas flow: 45cc/min.  
 Inlet liner: 4mm single gooseneck (cat.# 20798)