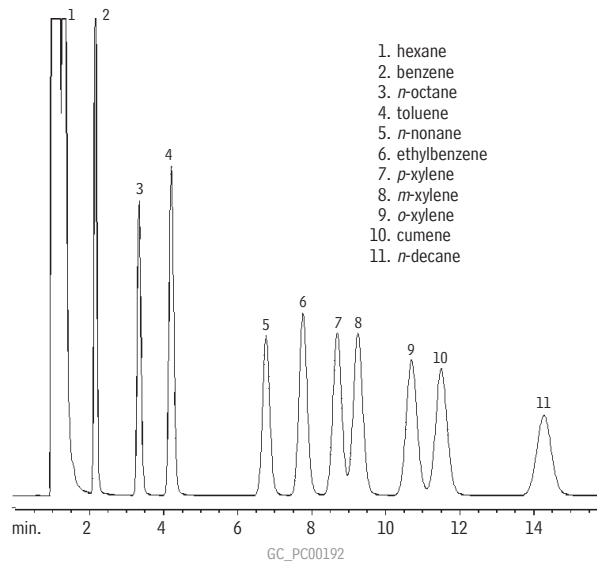


Aromatics (Xylene Isomers plus Cumene)

5% Rt™-1200/1.75% Bentone® 34

(packed)



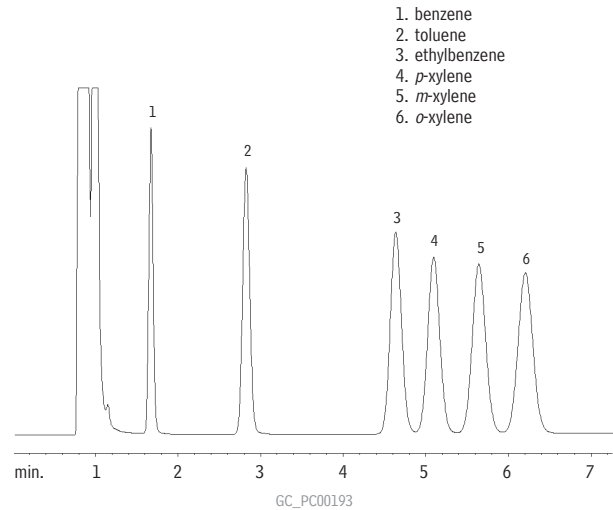
1. hexane
2. benzene
3. *n*-octane
4. toluene
5. *n*-nonane
6. ethylbenzene
7. *p*-xylene
8. *m*-xylene
9. *o*-xylene
10. cumene
11. *n*-decane

Column: 5% Rt™-1200/1.75% Bentone® 34 on 100/120 Silcoport™, 1.8m, 1/8" OD, 2mm ID SilcoSmooth™ tubing (cat.# 80125)
 Sample size: 0.1µL
 Conc.: 0.5µg/µL in hexane
 Oven temp.: 75°C
 Inj./det. temp.: 200°C
 Carrier gas: nitrogen
 Flow rate: 20mL/min.
 FID sensitivity: 32 x 10⁻¹¹ AFS

Aromatics (Xylene Isomers /BTEX)

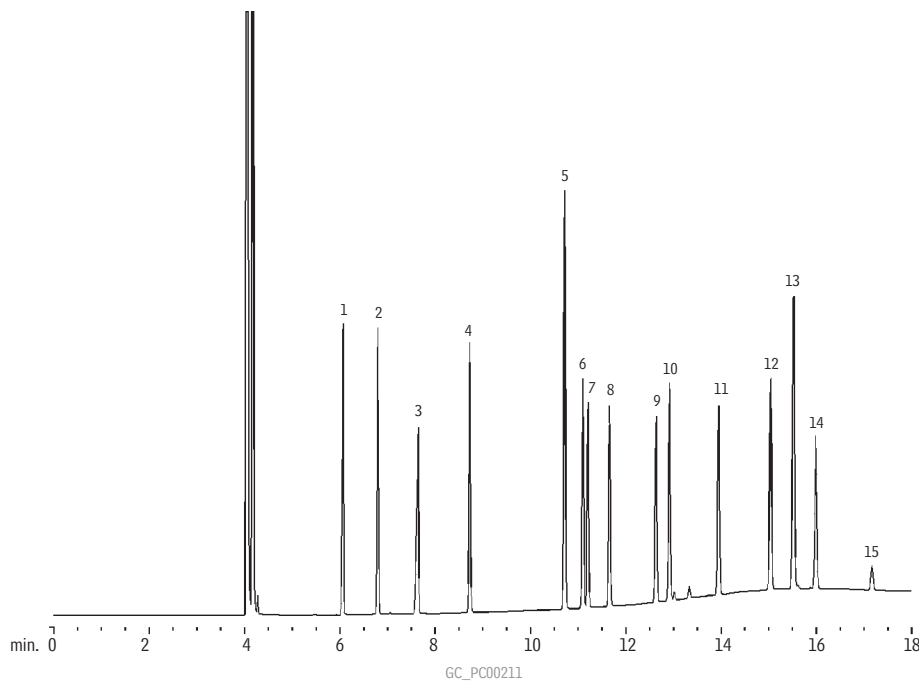
5% Rt™-1200/5% Bentone® 34

(packed)



1. benzene
2. toluene
3. ethylbenzene
4. *p*-xylene
5. *m*-xylene
6. *o*-xylene

Column: 5% Rt™-1200/5% Bentone® 34 100/120 Silcoport™, 2m, 1/8" OD, 2mm ID SilcoSmooth™ tubing (cat.# 80129)
 Sample size: 0.1µL
 Conc.: 0.5µg/µL in hexane
 Oven temp.: 100°C
 Inj./det. temp.: 200°C
 Carrier gas: nitrogen
 Flow rate: 20mL/min.
 FID sensitivity: 32 x 10⁻¹¹ AFS

Aromatics
Rt™-TCEP

1. *n*-undecane
2. benzene
3. *n*-dodecane
4. toluene
5. ethylbenzene
6. *p*-xylene
7. *m*-xylene
8. cumene
9. *n*-propylbenzene
10. *o*-xylene
11. mesitylene
12. 1-ethyl-2-methylbenzene
13. *m*-diethylbenzene
14. *p*-diethylbenzene
15. *o*-diethylbenzene

Column: Rt™-TCEP, 60m, 0.25mm ID, 0.40µm (cat.# 10999)
 Inj.: 1.0µL split injection, components @ 500ppm (ethylbenzene @ 1000ppm)
 Oven temp.: 60°C (hold 5 min.) to 100°C @ 5°C/min. (hold 10 min.)
 Inj./det. temp.: 200°C
 Carrier gas: helium
 Linear velocity: 30cm/sec. set @ 80°C
 FID sensitivity: 6.4 x 10⁻¹¹ AFS
 Split flow: 46mL/min.