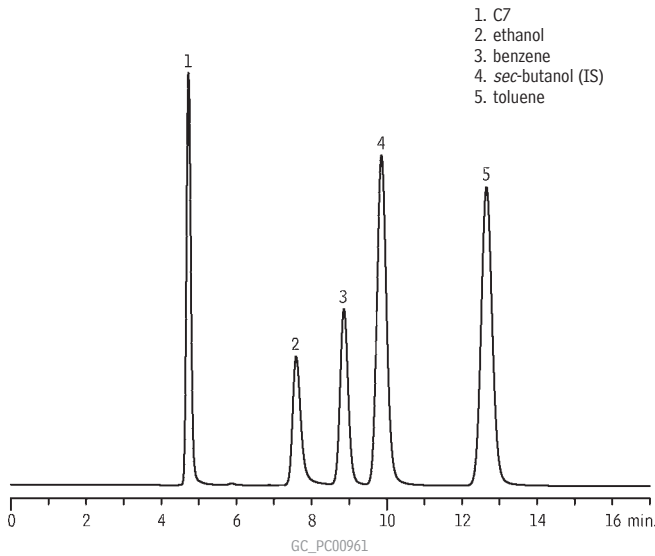


**Spark Ignition Fuel Aromatics  
D3606 Column Set**

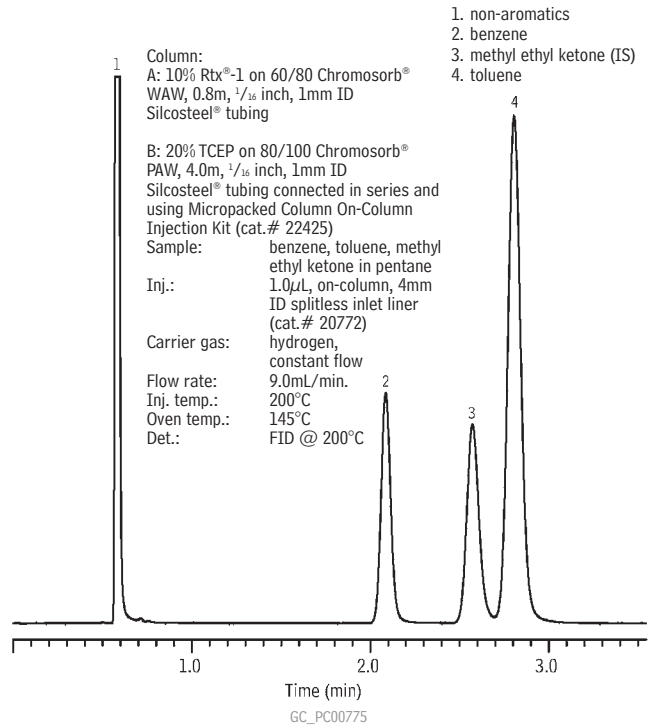
new!



- 1. C7
- 2. ethanol
- 3. benzene
- 4. sec-butanol (IS)
- 5. toluene

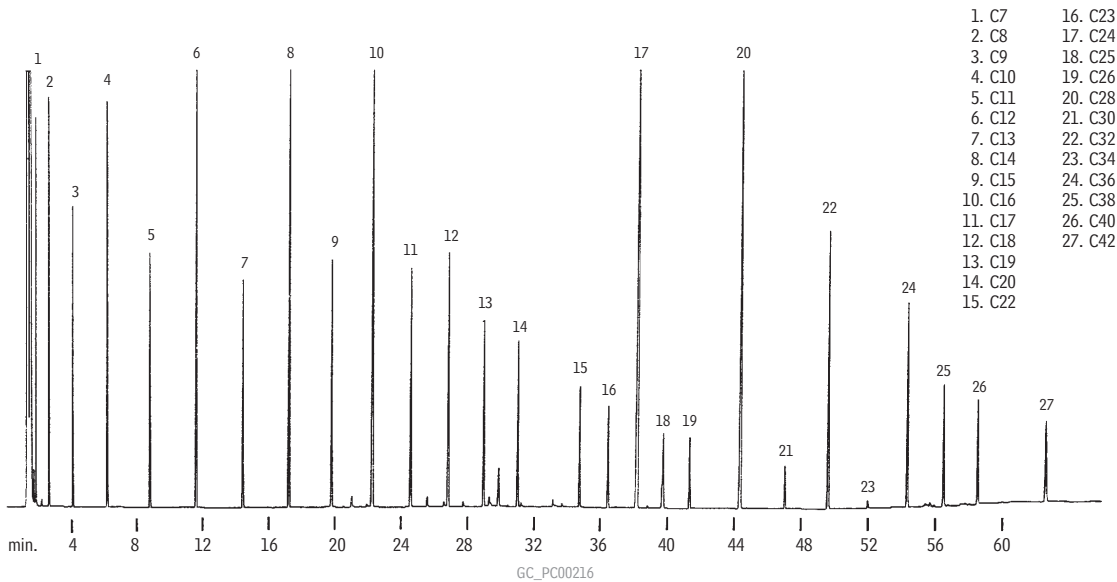
Column: D3606 Column Set  
 column 1: 6' x 1/8" OD (1.8m x 2mm ID), nonpolar Rtx®-1 polymer  
 column 2: 16' x 1/8" OD (4.9m x 2mm ID), proprietary packing  
 Sample: 0.05µg/µL; C7 (26%), ethanol (10%) benzene(10%), sec-butanol (26%), toluene (26%)  
 Inj.: 0.05µL, direct injection  
 Inj. temp.: 200°C  
 Carrier gas: helium, constant flow  
 Flow rate: 20mL/min.  
 Oven temp.: 135°C, isothermal  
 Det.: FID @ 250°C

**Motor Oil & Aviation Gas  
ASTM Method D3606-99  
10% Rtx®-1 & 20% TCEP  
(micropacked)**



- 1. non-aromatics
  - 2. benzene
  - 3. methyl ethyl ketone (IS)
  - 4. toluene
- Column:  
 A: 10% Rtx®-1 on 60/80 Chromosorb® WAW, 0.8m, 1/16 inch, 1mm ID Silcosteel® tubing  
 B: 20% TCEP on 80/100 Chromosorb® PAW, 4.0m, 1/16 inch, 1mm ID Silcosteel® tubing connected in series and using Micropacked Column On-Column Injection Kit (cat.# 22425)  
 Sample: benzene, toluene, methyl ethyl ketone in pentane  
 Inj.: 1.0µL, on-column, 4mm ID splitless inlet liner (cat.# 20772)  
 Carrier gas: hydrogen, constant flow  
 Flow rate: 9.0mL/min.  
 Inj. temp.: 200°C  
 Oven temp.: 145°C  
 Det.: FID @ 200°C

**Hydrocarbons, C7-C42  
Rtx®-1**



- 1. C7
- 2. C8
- 3. C9
- 4. C10
- 5. C11
- 6. C12
- 7. C13
- 8. C14
- 9. C15
- 10. C16
- 11. C17
- 12. C18
- 13. C19
- 14. C20
- 15. C22
- 16. C23
- 17. C24
- 18. C25
- 19. C26
- 20. C28
- 21. C30
- 22. C32
- 23. C34
- 24. C36
- 25. C38
- 26. C40
- 27. C42

Column: Rtx®-1, 30m, 0.53mm ID, 0.25µm (cat.# 10125)  
 Sample: 0.2µL injection of a synthetic hydrocarbon mix, ~ 0.1mg/mL per component  
 Inj.: Direct injection using a Uniliner® inlet liner  
 Oven temp.: 40°C to 340°C @ 5°C/min.  
 Inj./det. temp.: 340°C  
 Carrier gas: hydrogen  
 Linear velocity: 40cm/sec. set @ 40°C  
 FID sensitivity: 64 x 10<sup>-11</sup> AFS

GC APPLICATIONS | PETROLEUM & PETROCHEMICALS

