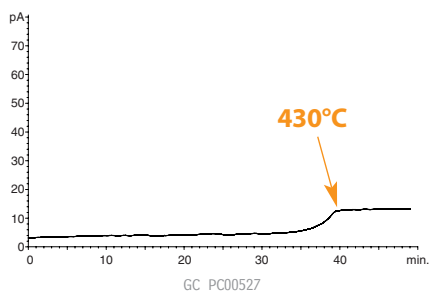
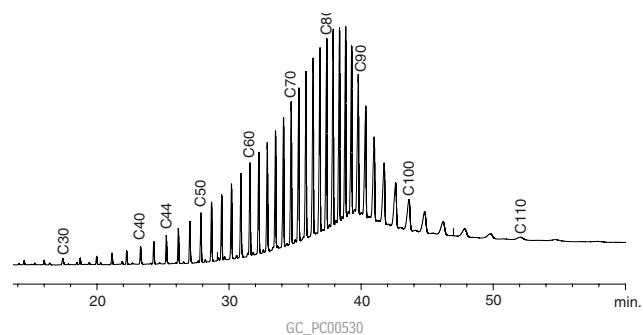


Bleed Profile MXT®-1HT Sim Dist



Column: MXT®-1HT Sim Dist, 5m, 0.53mm ID, 0.10 μ m (cat.# 70100)
 Oven temp.: 40°C to 430°C @ 10°C/min. (hold 30 min.)
 Injector: on-column (track oven)
 Carrier gas: helium (constant pressure)
 Head pressure: 1.0psi
 Linear velocity: 60cm/sec.
 Flow rate: 7.8mL/min.
 Det.: FID @ 430°C
 Make-up gas flow: 40cc/min.

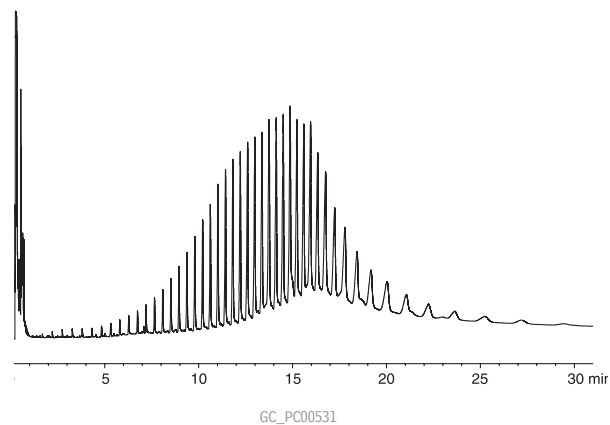
Hydrocarbons (C30-C110) MXT®-1HT Sim Dist



Column: MXT®-1HT Sim Dist, 5m, 0.53mm ID, 0.10 μ m (cat.# 70100)
 Sample: 0.2 μ L Polywax® 1000 standard (cat.# 36227)
 Solvent: carbon disulfide
 Oven temp.: 40°C to 430°C @ 10°C/min. (hold 30 min.)
 Injector: on-column (track oven)
 Carrier gas: helium (constant pressure)
 Head pressure: 1.0psi
 Linear velocity: 60cm/sec.
 Flow rate: 7.8mL/min.
 Det.: FID @ 430°C
 Make-up gas flow: 40cc/min.

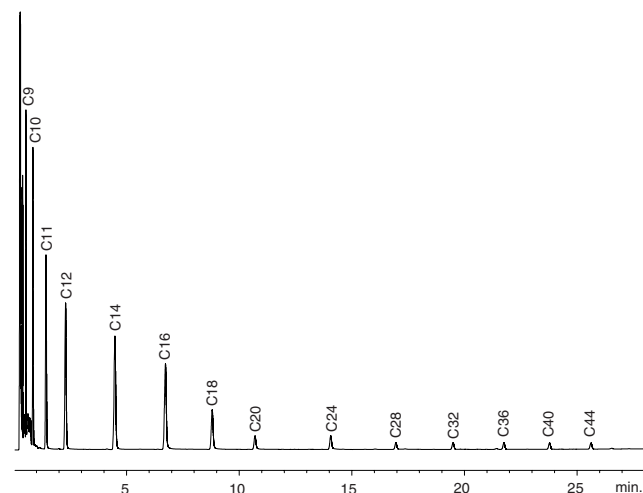
Hydrocarbons (C44-C100) MXT®-1HT Sim Dist

(fast GC)



Column: MXT®-1HT Sim Dist, 5m, 0.53mm ID, 0.10 μ m (cat.# 70100)
 Sample: 0.2 μ L injection of Polywax® 1000
 Solvent: carbon disulfide
 Oven temp.: 40°C to 430°C @ 60°C/min. (hold 25 min.)
 Injector: on-column (track oven)
 Carrier gas: helium (constant pressure)
 Head pressure: 1.0psi
 Linear velocity: 60cm/sec.
 Flow rate: 7.8mL/min.
 Det.: FID @ 430°C
 Make up gas flow: 40cc/min.

Hydrocarbons (C10-C44) MXT®-1HT Sim Dist



Column: MXT®-1HT Sim Dist, 5m, 0.53mm ID, 0.10 μ m (cat.# 70100)
 Sample: 0.2 μ L hydrocarbon standard (cat.# 31222)
 Solvent: carbon disulfide
 Oven temp.: 40°C to 430°C @ 10°C/min. (hold 30 min.)
 Injector: on-column (track oven)
 Carrier gas: helium (constant pressure)
 Head pressure: 1.0psi
 Linear velocity: 60cm/sec.
 Flow rate: 7.8mL/min.
 Det.: FID @ 430°C
 Make-up gas flow: 40cc/min.