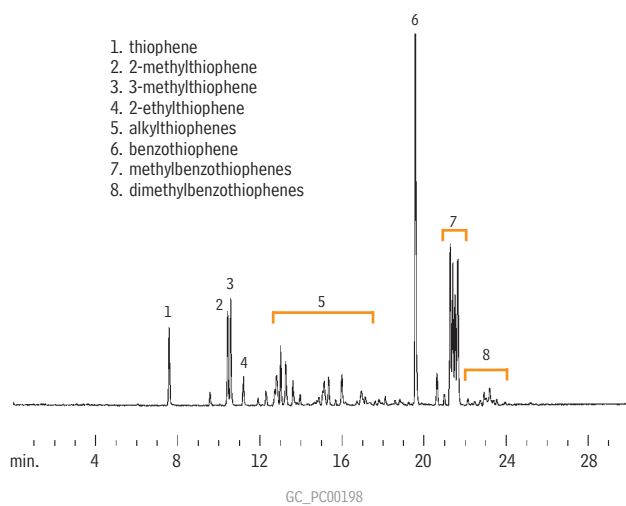


Sulfur in Gasoline

Rtx®-1

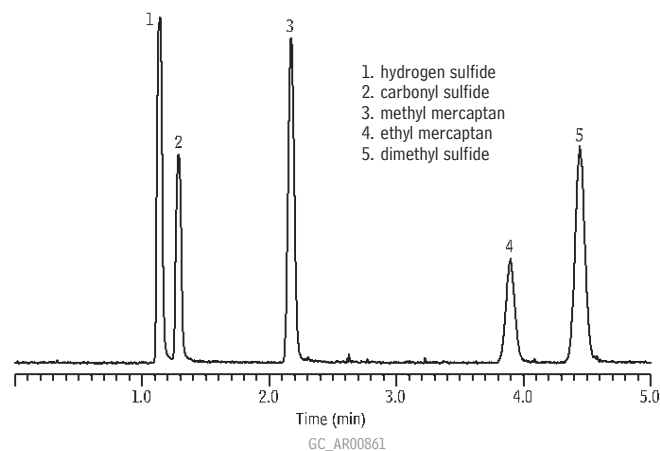


Column: Rtx®-1, 30m, 0.32mm ID, 4.0µm (cat.# 10198)
 Sample: 1.0µL split injection of gasoline containing 300ppm total sulfur
 Oven temp.: 40°C (hold 3 min.) to 275°C @ 10°C/min. (hold 5 min.)
 Inj./det. temp.: 275°C
 Det.: SCD
 Carrier gas: helium
 Linear velocity: 70cm/sec. (flow rate: 2.5mL/min.)
 Split ratio: 10:1

Sulfur Compounds

Rxi®-1ms

Rxi® Technology!



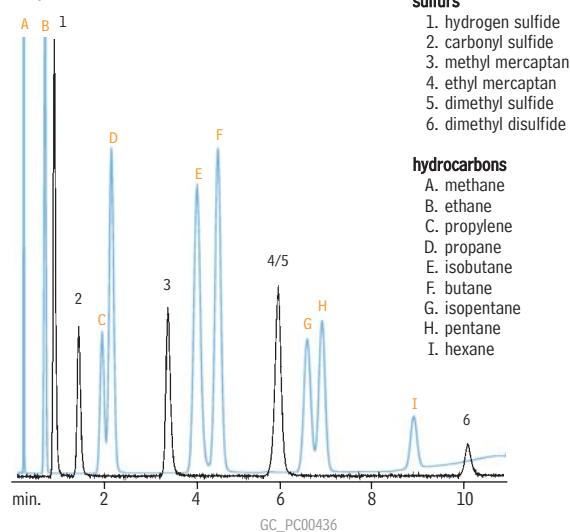
Column: Rxi®-1ms, 30m, 0.32mm ID, 4.00µm (cat.# 13396)
 Sample: hydrogen sulfide, carbonyl sulfide, methyl mercaptan, ethyl mercaptan, dimethyl sulfide, 100 ppbv each in helium
 Inj.: 1µL splitless, direct
 Sample loop temp.: 30°C
 Carrier gas: helium, constant pressure
 Linear velocity: 48cm/sec. @ 30°C
 Oven temp.: 30°C
 Det.: sulfur chemiluminescence detector
 Det. temp.: 800°C

Sample storage & transfer:
 SilcoCan™ air monitoring canister with Siltek® treated 1/4" valve (cat.# 24182-650);
 Sulfinert® treated gas sample loop, 1cc (cat.# 22848); Sulfinert® treated gas sample loop, 10cc (custom order)

Sulfur Compounds

Rt™-XLSulfur

(micropacked)



Column: Rt™-XLSulfur micropacked column, 1m, 0.75mm ID (cat.# 19806)
 Conc.: 50ppb each
 Oven temp.: 60°C to 230°C @ 15°C/min.
 Carrier gas: helium
 Flow rate: 9mL/min.
 Det.: SCD/FID

Sulfur standards courtesy of DCG Partnership 1 Ltd., Pearland, TX.

Get More!

Petroleum & Petrochemical
 Related Articles Online

www.restek.com/chempetro

