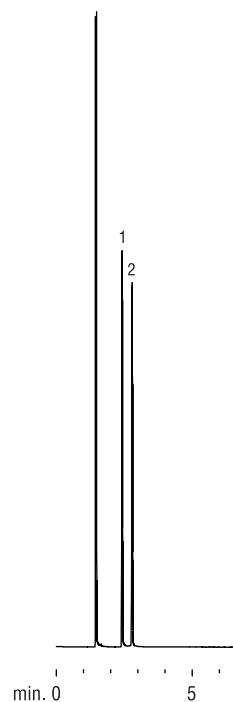


## Glycols

## Rtx®-BAC1 &amp; Rtx®-BAC2

Rtx®-BAC1



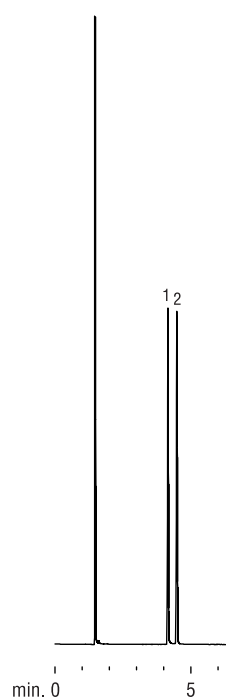
1. ethylene glycol
2. propylene glycol

Columns: Rtx®-BAC1, 30m, 0.32mm ID, 1.8 $\mu$ m (cat.# 18003)  
Rtx®-BAC2, 30m, 0.32mm ID, 1.2 $\mu$ m (cat.# 18002)

Inj.: 0.5 $\mu$ L split injection  
Conc.: 1%  
Solvent: methanol  
Oven temp.: 100°C to 240°C @ 5°C/min. (hold 5 min.)  
Inj. temp.: 240°C  
Inj. mode: 100:1 split  
Inlet liner: 4mm single gooseneck (cat.# 20798)  
Septa purge: 5.0cc/min.  
Carrier gas: helium, constant pressure  
Pressure: 12psi  
Linear velocity: 37cm/sec.  
Column flow rate: 2.1mL/min.  
Det.: FID @ 240°C  
Make-up gas flow: 40cc/min.

GC\_EV00474

Rtx®-BAC2

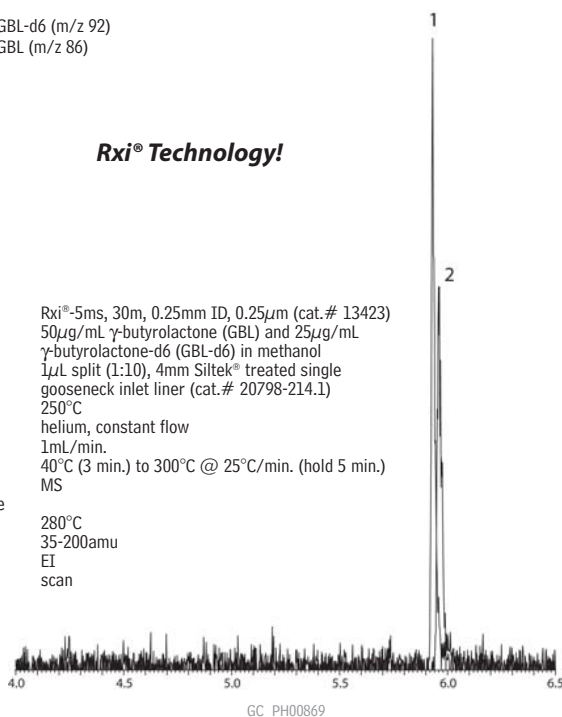


### $\gamma$ -butyrolactone and $\gamma$ -butyrolactone-d6 **new!** Rxi®-5ms

1. GBL-d6 (m/z 92)
2. GBL (m/z 86)

**Rxi® Technology!**

Column: Rxi®-5ms, 30m, 0.25mm ID, 0.25 $\mu$ m (cat.# 13423)  
Sample: 50 $\mu$ g/mL  $\gamma$ -butyrolactone (GBL) and 25 $\mu$ g/mL  $\gamma$ -butyrolactone-d6 (GBL-d6) in methanol  
Inj.: 1 $\mu$ L split (1:10), 4mm Siltek® treated single gooseneck inlet liner (cat.# 20798-214.1)  
Inj. temp.: 250°C  
Carrier gas: helium, constant flow  
Flow rate: 1mL/min.  
Oven temp.: 40°C (3 min.) to 300°C @ 25°C/min. (hold 5 min.)  
Det: MS  
Transfer line temp.: 280°C  
Scan range: 35-200amu  
Ionization: EI  
Mode: scan



GC\_PH00869

## Get More!

Clinical/Forensics/Toxicology  
Related Articles Online

"Fast Screening and  
Confirmation for Gamma-  
Hydroxybutyrate (GHB)"

[www.restek.com/CFT](http://www.restek.com/CFT)

