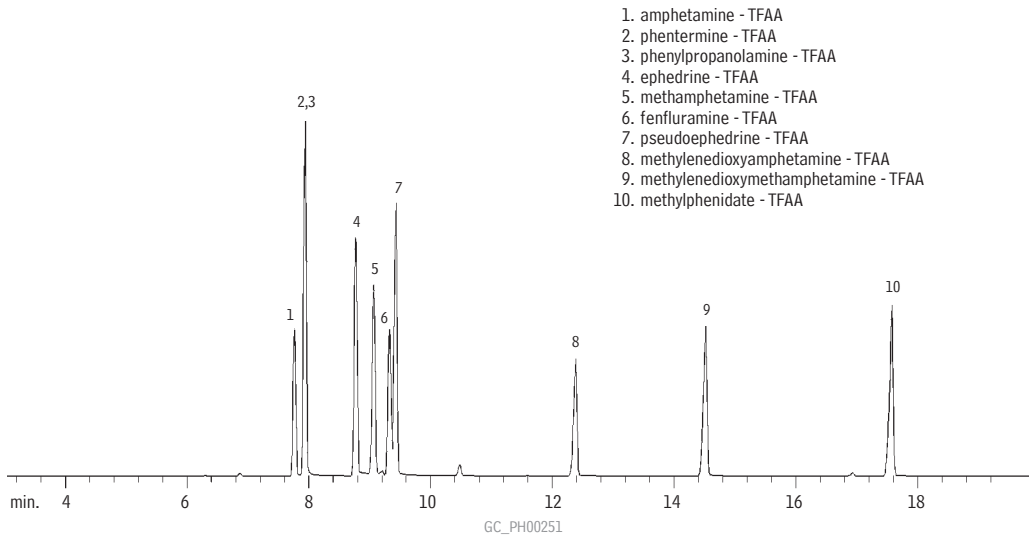


Sympathomimetic Amines (Basic Drugs) (TFAA Derivatives)

Rtx®-5



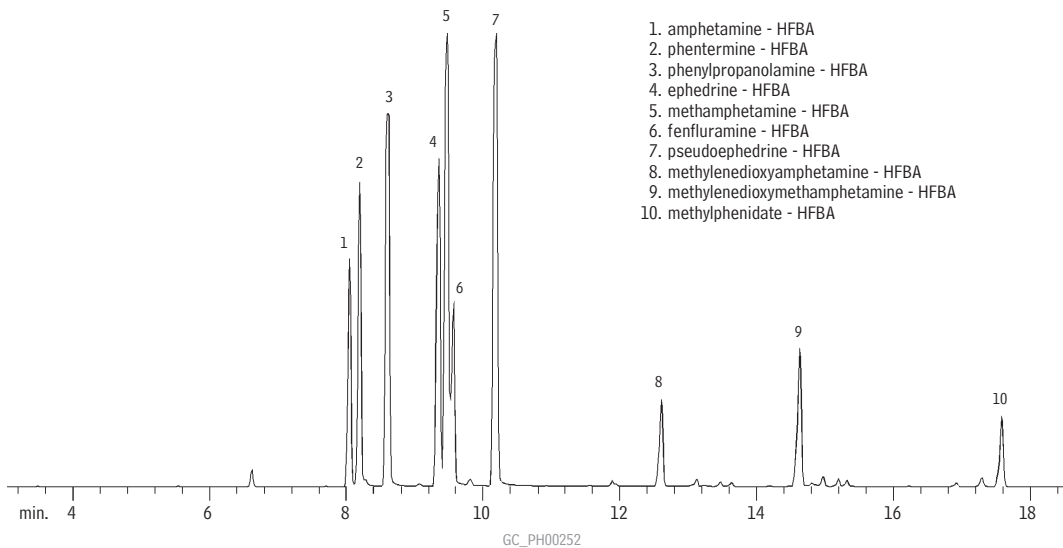
1. amphetamine - TFAA
2. phentermine - TFAA
3. phenylpropanolamine - TFAA
4. ephedrine - TFAA
5. methamphetamine - TFAA
6. fenfluramine - TFAA
7. pseudoephedrine - TFAA
8. methylenedioxyamphetamine - TFAA
9. methylenedioxymethamphetamine - TFAA
10. methylphenidate - TFAA

GC_PH00251

Column: Rtx®-5, 30m, 0.25mm ID, 0.25µm (cat.# 10223)
 Sample: 1.0µL splitless injection of derivatized sympathomimetic amines
 Conc.: approximately 2.5ng/µL
 Oven temp.: 40°C (hold 1 min.) to 150°C @ 30°C/min.,
 to 300°C @ 5°C/min.
 Inj. temp.: 225°C
 Interface temp.: 275°C
 Det.: MSD
 Ionization: EI
 Carrier gas: helium
 Linear velocity: 20cm/sec. set @ 100°C
 Splitless hold time: 1 min.

Sympathomimetic Amines (Basic Drugs) (HFBA Derivatives)

Rtx®-5



1. amphetamine - HFBA
2. phentermine - HFBA
3. phenylpropanolamine - HFBA
4. ephedrine - HFBA
5. methamphetamine - HFBA
6. fenfluramine - HFBA
7. pseudoephedrine - HFBA
8. methylenedioxyamphetamine - HFBA
9. methylenedioxymethamphetamine - HFBA
10. methylphenidate - HFBA

GC_PH00252

Column: Rtx®-5, 30m, 0.25mm ID, 0.25µm (cat.# 10223)
 Sample: 1.0µL splitless injection of sympathomimetic amines
 Conc.: approximately 2.5ng/µL
 Oven temp.: 40°C (hold 1 min.) to 150°C @ 30°C/min.,
 to 300°C @ 5°C/min.
 Inj. temp.: 225°C
 Interface temp.: 275°C
 Det.: MSD
 Ionization: EI
 Carrier gas: helium
 Linear velocity: 20cm/sec. set @ 100°C
 Splitless hold time: 1 min.