

Blood Alcohol Analysis

Rtx[®]-BAC1/Rtx[®]-BAC2 (proprietary Crossbond[®] phase)

- Application-specific columns for blood alcohol analysis—achieve baseline resolution in less than 3 minutes. Also excellent for abused inhalant anesthetics, γ -hydroxybutyrate (GHB)/ γ -butyrolactone (GBL), glycols, and common industrial solvents.
- Rtx[®]-BAC2 confirmation column provides four elution order changes under the same conditions.
- Stable to 260°C.

These columns separate to baseline all blood alcohol compounds in blood, breath, or urine, in less than 3 minutes, under isothermal conditions. Isothermal analysis increases productivity by eliminating the need for oven cycling. Confirmation is easily achieved with this tandem set because there are four elution order changes between the two columns.

restek
innovation!

Baseline resolution in less than 3 minutes.

similar **phases**

DB-ALC1, DB-ALC2

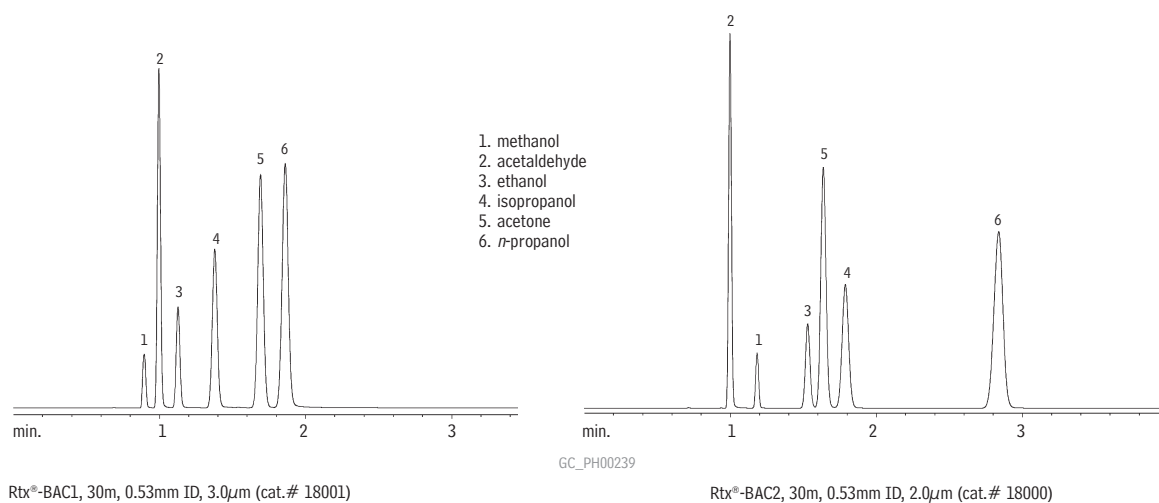
Rtx[®]-BAC1 Columns (fused silica)

ID	df (μ m)	temp. limits	30-Meter
0.32mm	1.80	-20 to 240/260°C	18003
0.53mm	3.00	-20 to 240/260°C	18001

Rtx[®]-BAC2 Columns (fused silica)

ID	df (μ m)	temp. limits	30-Meter
0.32mm	1.20	-20 to 240/260°C	18002
0.53mm	2.00	-20 to 240/260°C	18000

Rapid, reliable blood alcohol testing, using Rtx[®]-BAC column.



Inj.: 1.0mL headspace sample of a blood alcohol mix
Sample conc.: 0.1% per compound
Oven temp.: 40°C
Inj./det. temp.: 200°C
Carrier gas: helium
Linear velocity: 80cm/sec. set @ 40°C
FID sensitivity: 1.28 x 10⁻¹⁰ AFS

ordering **note**

Rtx[®]-BAC1 and Rtx[®]-BAC2 columns are available with Integra-Guard™ built-in guard columns. Get the protection without the connection! See **page 30** for descriptions and ordering information.