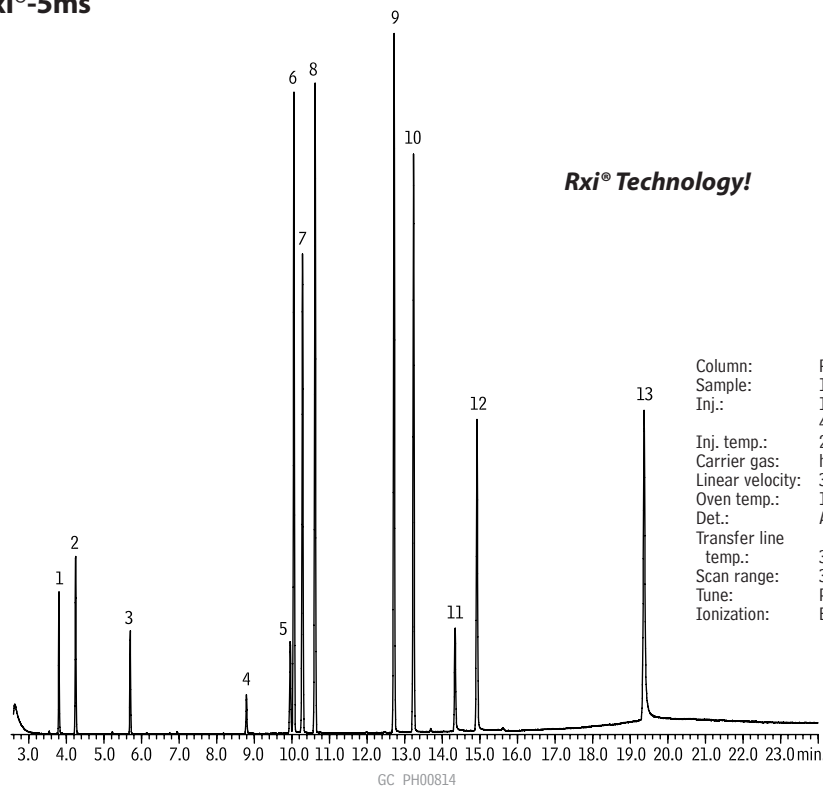


## Basic Drugs (Underivatized)

## Rxi®-5ms



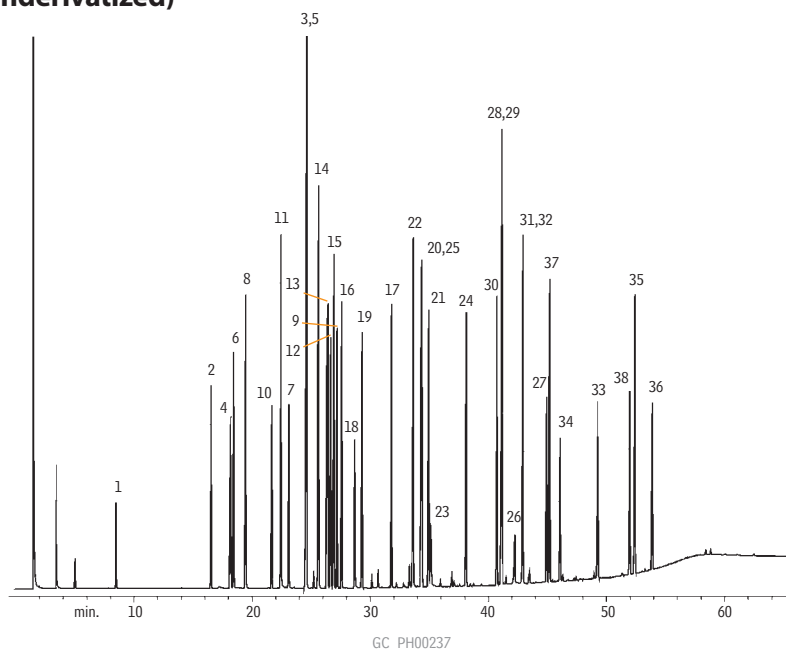
1. amphetamine
2. methamphetamine
3. nicotine
4. cotinine
5. caffeine
6. benzphetamine
7. ketamine
8. phenacyclidine
9. methadone
10. cocaine
11. codeine
12. scopolamine
13. alprazolam

Column: Rxi®-5ms, 30m, 0.25mm ID, 0.25µm (cat.# 13423)  
 Sample: 1000µg/mL each in methanol  
 Inj.: 1.0µL split (50:1), 20ng each compound on column; Siltek® treated 4mm gooseneck splitless inlet liner (cat.# 20799-214.5)  
 Inj. temp.: 250°C  
 Carrier gas: helium  
 Linear velocity: 30cm/sec., constant pressure  
 Oven temp.: 100°C to 220°C @ 15°C/min., to 330°C @ 10°C/min. (hold 5 min.)  
 Det.: Agilent 5973 MSD  
 Transfer line temp.: 300°C  
 Scan range: 35-550  
 Tune: PFTBA  
 Ionization: EI

## Basic Drugs (Underivatized)

## Rtx®-200

Analysis on  
 Rtx®-5 and Rtx®-35  
 columns: page 713.



1. nicotine
2. benzocaine
3. cotinine
4. meperidine
5. caffeine
6. benzphetamine
7. ketamine
8. diphenhydramine
9. lidocaine
10. phenyltoloxamine
11. tripeleminamine
12. phenothiazine
13. dextromethorphan
14. methadone
15. amitriptyline
16. trimipramine
17. tetracaine
18. pyrilamine
19. medazepam
20. bupivacaine
21. scopolamine
22. codeine
23. morphine
24. diazepam
25. chlorpromazine
26. temazepam
27. flunitrazepam
28. bromazepam
29. prazepam
30. acetopromazine
31. flurazepam
32. papaverine
33. clonazepam
34. haloperidol
35. alprazolam
36. triazolam
37. thioridazine
38. trazodone

Column: Rtx®-200, 30m, 0.25mm ID, 0.25µm (cat.# 15023)  
 Sample: 1.0µL split injection of a basic drug sample (1mg/mL)  
 Conc.: 1000ng/µL  
 Oven temp.: 100°C to 325°C @ 4°C/min. (hold 10 min.)  
 Inj./det. temp.: 250°C/320°C  
 Carrier gas: helium  
 Linear velocity: 30cm/sec. set @ 100°C  
 FID sensitivity: 1.28 x 10<sup>-10</sup> AFS  
 Split ratio: 50:1