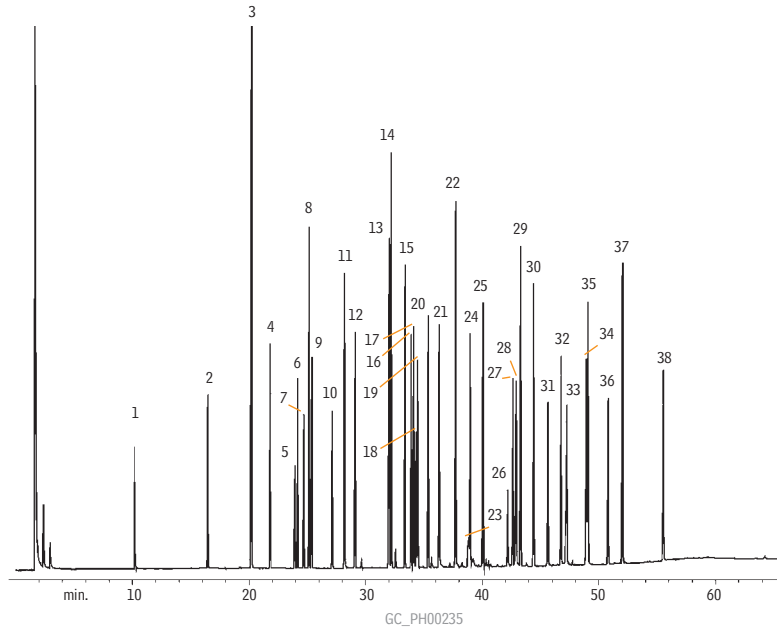


Basic Drugs (Underivatized)
Rtx®-5

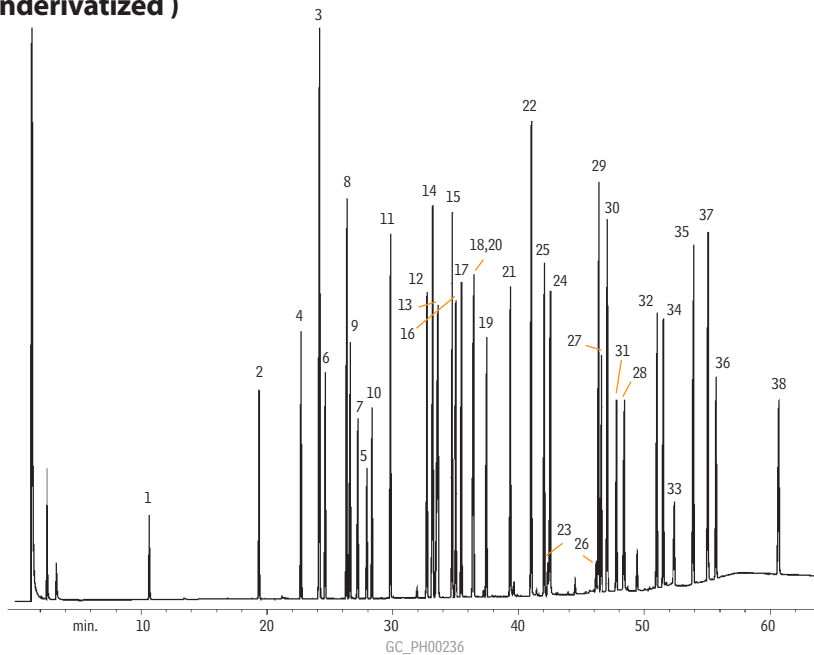


Analysis on
Rtx®-200
column: page 712

Column: Rtx®-5, 30m, 0.25mm ID, 0.25µm (cat.# 10223)
Sample: 1.0µL split injection of a basic drug sample
Conc.: 1000ng/µL
Oven temp.: 100°C to 325°C @ 4°C/min. (hold 10 min.)
Inj./det. temp.: 250°C/320°C
Carrier gas: helium
Linear velocity: 30cm/sec. set @ 100°C
FID sensitivity: 1.28 x 10¹⁰ AFS
Split ratio: 50:1

1. nicotine
2. benzocaine
3. cotinine
4. meperidine
5. caffeine
6. benzphetamine
7. ketamine
8. diphenhydramine
9. lidocaine
10. phenyltoloxamine
11. tripelemamine
12. phenothiazine
13. dextromethorphan
14. methadone
15. amitriptyline
16. trimipramine
17. tetracaine
18. pyrilamine
19. medazepam
20. bupivacaine
21. scopolamine
22. codeine
23. morphine
24. diazepam
25. chlorpromazine
26. temazepam
27. flunitrazepam
28. bromazepam
29. prazepam
30. acetopromazine
31. flurazepam
32. papaverine
33. clonazepam
34. haloperidol
35. alprazolam
36. triazolam
37. thioridazine
38. trazodone

Basic Drugs (Underivatized)
Rtx®-35



Column: Rtx®-35, 30m, 0.25mm ID, 0.25µm (cat.# 10423)
Sample: 1.0µL split injection of a basic drug sample
Conc.: 1000ng/µL
Oven temp.: 100°C to 325°C @ 4°C/min. (hold 10 min.)
Inj./det. temp.: 250°C/320°C
Carrier gas: helium
Linear velocity: 30cm/sec. set @ 100°C
FID sensitivity: 1.28 x 10¹⁰ AFS
Split ratio: 50:1

1. nicotine
2. benzocaine
3. cotinine
4. meperidine
5. caffeine
6. benzphetamine
7. ketamine
8. diphenhydramine
9. lidocaine
10. phenyltoloxamine
11. tripelemamine
12. phenothiazine
13. dextromethorphan
14. methadone
15. amitriptyline
16. trimipramine
17. tetracaine
18. pyrilamine
19. medazepam
20. bupivacaine
21. scopolamine
22. codeine
23. morphine
24. diazepam
25. chlorpromazine
26. temazepam
27. flunitrazepam
28. bromazepam
29. prazepam
30. acetopromazine
31. flurazepam
32. papaverine
33. clonazepam
34. haloperidol
35. alprazolam
36. triazolam
37. thioridazine
38. trazodone