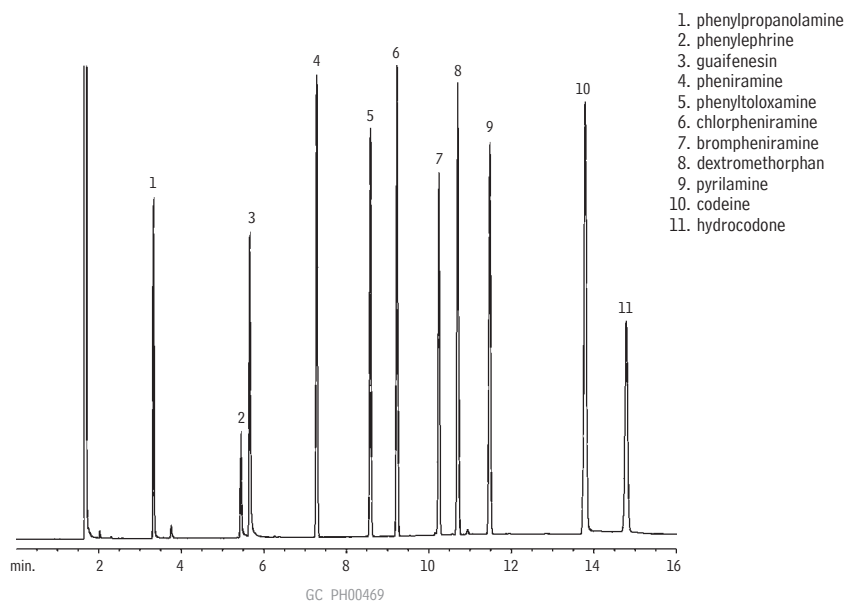


Cold Medications (Basic Drugs) (Underivatized)

Rtx®-5 Amine

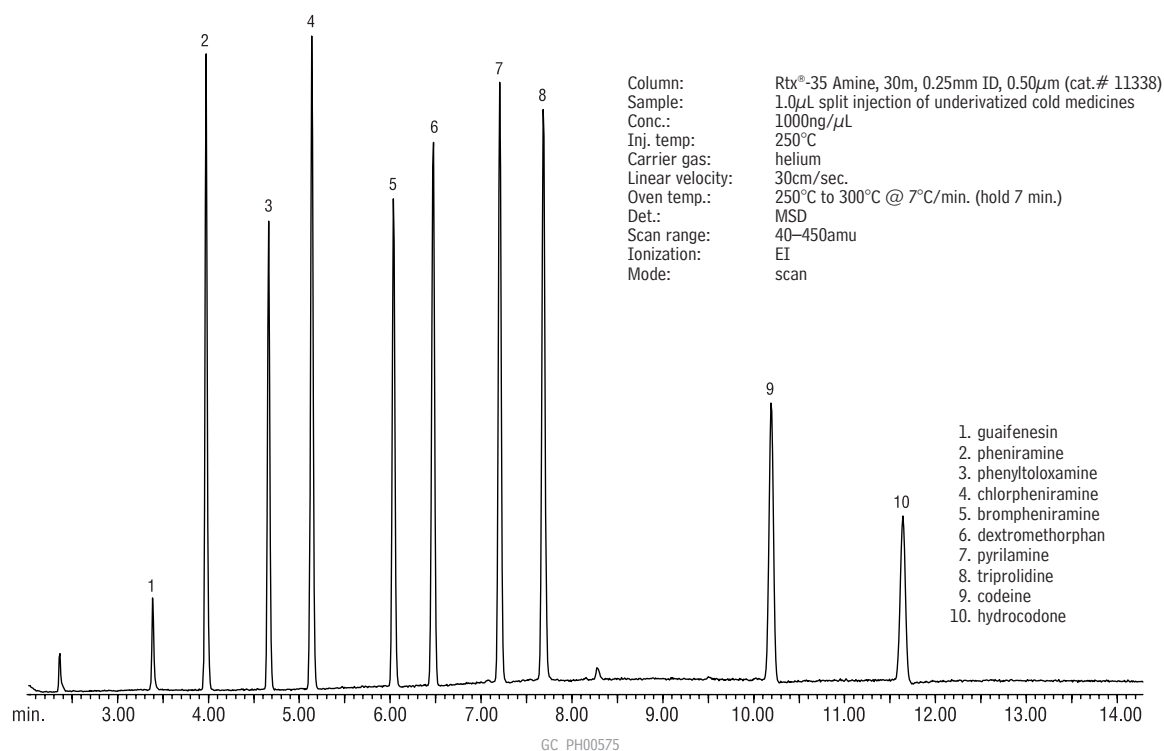


Column: Rtx®-5 Amine, 30m, 0.53mm ID, 1.0 μ m (cat.# 12355)
 Oven temp.: 175°C to 280°C @ 10°/min. (hold 5.5 min.)
 Inj./det. temp.: 250°C/280°C
 Carrier gas: helium
 Linear velocity: 40cm/sec.
 Sample size: 1 μ L
 Split vent flow: 88mL/min.
 Split ratio: 20:1

1. phenylpropanolamine
2. phenylephrine
3. guaifenesin
4. pheniramine
5. phenyltoloxamine
6. chlorpheniramine
7. brompheniramine
8. dextromethorphan
9. pyrilamine
10. codeine
11. hydrocodone

Cold Medications (Basic Drugs) (Underivatized)

Rtx®-35 Amine



Column: Rtx®-35 Amine, 30m, 0.25mm ID, 0.50 μ m (cat.# 11338)
 Sample: 1.0 μ L split injection of underivatized cold medicines
 Conc.: 1000ng/ μ L
 Inj. temp: 250°C
 Carrier gas: helium
 Linear velocity: 30cm/sec.
 Oven temp.: 250°C to 300°C @ 7°C/min. (hold 7 min.)
 Det.: MSD
 Scan range: 40–450amu
 Ionization: EI
 Mode: scan

1. guaifenesin
2. pheniramine
3. phenyltoloxamine
4. chlorpheniramine
5. brompheniramine
6. dextromethorphan
7. pyrilamine
8. triprolidine
9. codeine
10. hydrocodone