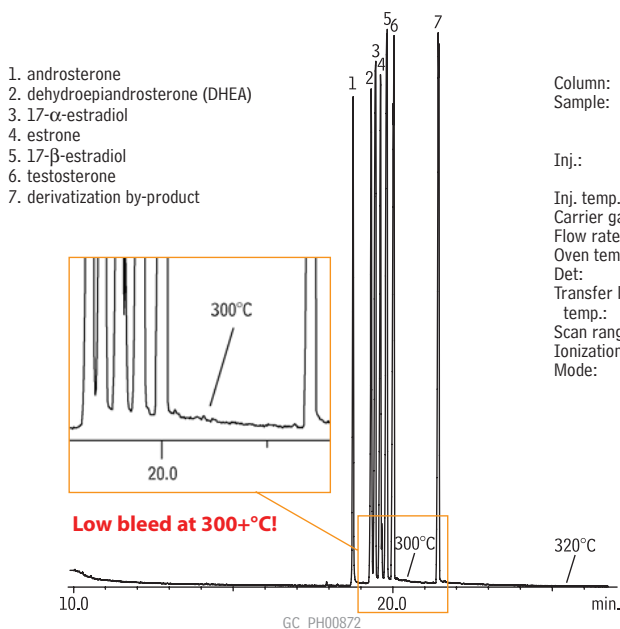


## Steroids: Sex Hormones

Rxi®-1ms

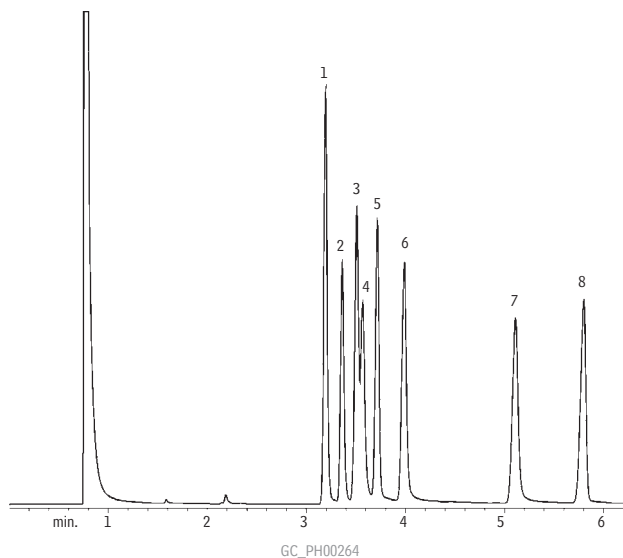
## Rxi® Technology!



Column: Rxi®-1ms, 30m, 0.25mm ID, 0.25 $\mu$ m (cat.# 13323)  
Sample: 100 $\mu$ g/mL each hormone in methanol or ethanol; compounds derivatized using 2% methoxyamine HCl (CH<sub>3</sub>ONH<sub>2</sub>) in pyridine, then N-trimethylsilylimidazole (TMSI), then analyzed  
Inj.: 1.0 $\mu$ L splitless (hold 0.5 min.), 3.5mm single gooseneck inlet liner (cat.# 20961)  
Inj. temp.: 250°C  
Carrier gas: helium, constant flow  
Flow rate: 1mL/min.  
Oven temp.: 100°C to 320°C @ 10°C/min. (hold 10 min.)  
Det: MS: Shimadzu 17A with QP5000  
Transfer line temp.: 280°C  
Scan range: 40-700amu  
Ionization: EI  
Mode: scan

## Antidepressants (Basic Drugs) (Underivatized)

Rtx®-1701



1. amitriptyline
2. trimipramine
3. imipramine
4. nortriptyline
5. doxepin
6. desipramine
7. maprotyline
8. clomipramine

Column: Rtx®-1701, 15m, 0.25mm ID, 0.25 $\mu$ m (cat.# 12020)  
Sample: 1.0 $\mu$ L split injection of antidepressants  
Conc.: 25ng/component  
Oven temp.: 225°C  
Inj./det. temp.: 250°C/260°C  
Carrier gas: helium  
Linear velocity: 30cm/sec. set @ 225°C  
FID sensitivity: 2.56 x 10<sup>10</sup> AFS  
Split ratio: 40:1