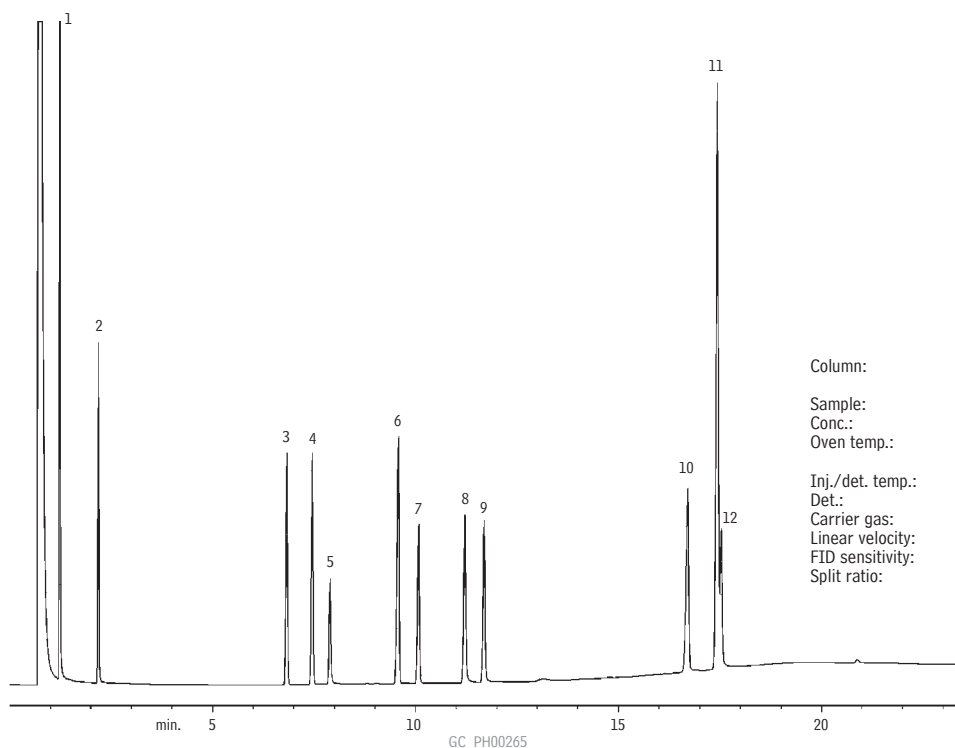


## Antiepileptics

## Antiepileptics (Underivatized)

Rtx®-20

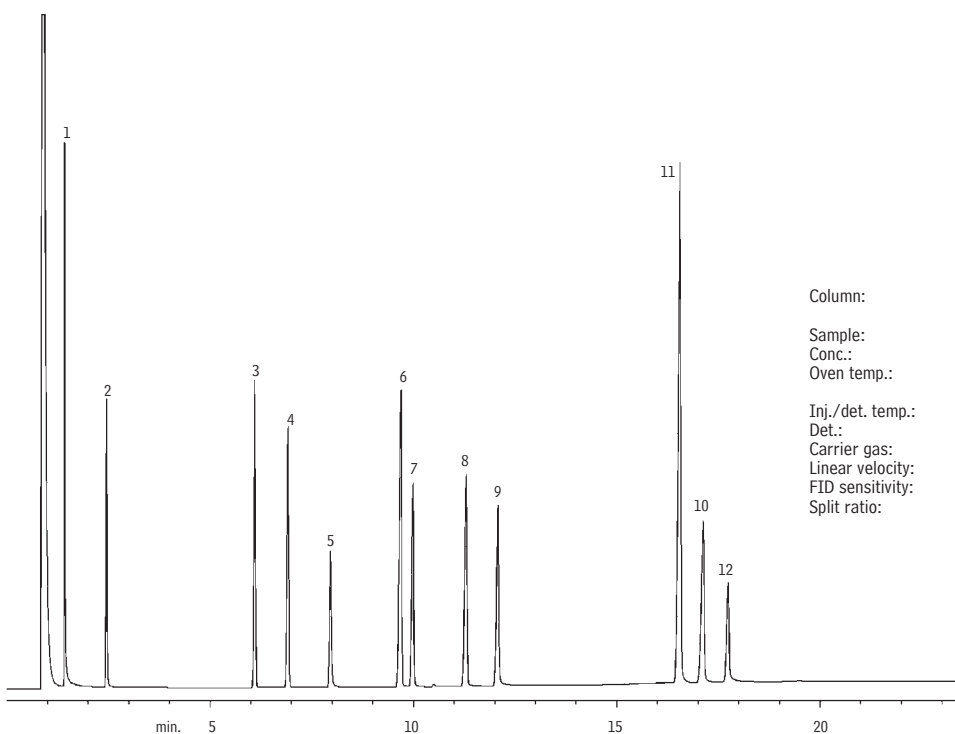


Column: Rtx®-20, 15m, 0.32mm ID, 0.50 $\mu$ m (cat.# 10336)  
 Sample: 1.0 $\mu$ L split injection of antiepileptic drugs  
 Conc.: 1000ng/ $\mu$ L  
 Oven temp.: 150°C to 280°C @ 7°C/min. (hold 5 min.)  
 Inj./det. temp.: 250°C/270°C  
 Det.: FID  
 Carrier gas: helium  
 Linear velocity: 30cm/sec. set @ 150°C  
 FID sensitivity: 1.28 x 10<sup>-10</sup> AFS  
 Split ratio: 30:1

1. valproic acid
2. ethosuximide
3. methsuximide
4. phensuximide
5. desmethyl methsuximide
6. mephenytoin
7. ethotoin
8. PEMA
9. phenobarbital
10. primidone
11. carbamazepine
12. diphenylhydantoin

## Antiepileptics (Underivatized)

Rtx®-1701



Column: Rtx®-1701, 15m, 0.32mm ID, 0.50 $\mu$ m (cat.# 12036)  
 Sample: 1.0 $\mu$ L split injection of antiepileptic drugs  
 Conc.: 1000ng/ $\mu$ L  
 Oven temp.: 150°C to 280°C @ 7°C/min. (hold 5 min.)  
 Inj./det. temp.: 250°C/270°C  
 Det.: FID  
 Carrier gas: helium  
 Linear velocity: 30cm/sec. set @ 150°C  
 FID sensitivity: 1.28 x 10<sup>-10</sup> AFS  
 Split ratio: 30:1