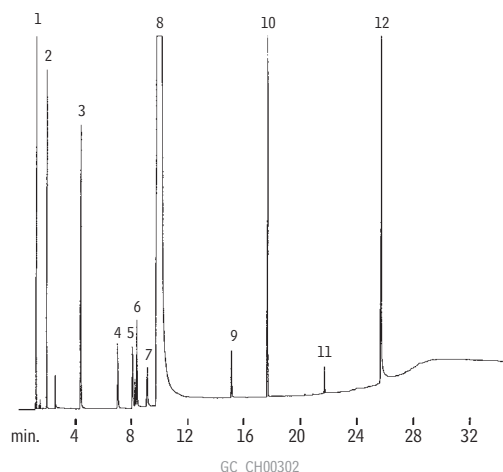
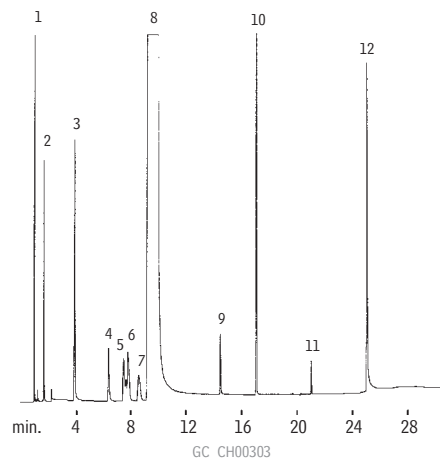


Hexamethylenediamine Stabilwax®-DB



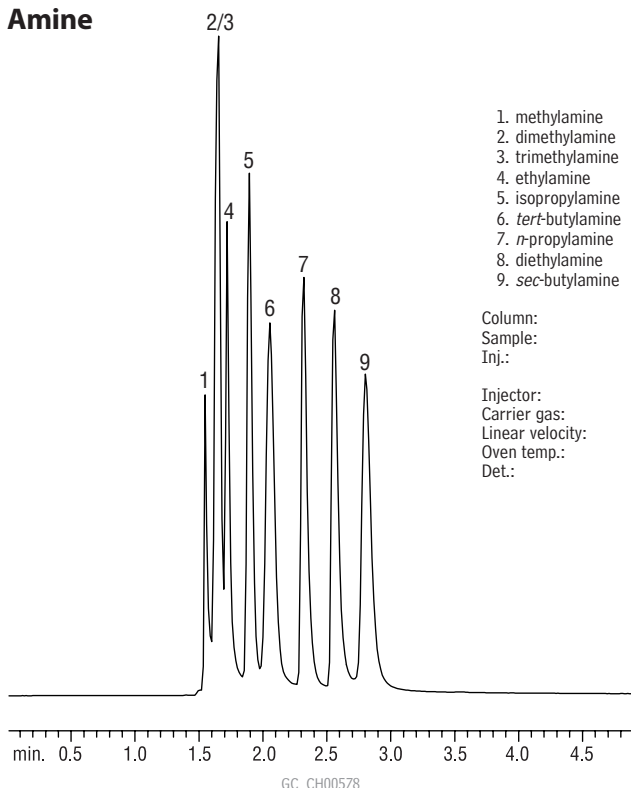
1. cyclohexane
2. hexamethyleimine
3. 1,4-diaminobutane
4. pentamethylenediamine
5. 1,2-diaminocyclohexane
6. 1,5-diamino-2-methylpentane
7. aminomethylcyclopentylamine
8. hexamethylenediamine
9. 6-aminocapronitrile
10. *n*-valeramide
11. adiponitrile
12. *bis*-hexamethylenetriamine



Column: Stabilwax®-DB, 30m, 0.53mm ID, 0.5 μ m (cat.# 10840)
 Sample: 0.2 μ L direct injection of a neat hexamethylenediamine sample onto a Uniliner® inlet liner
 Oven temp.: 95°C (hold 6 min.) to 235°C @ 7°C/min. (hold 2 min.)
 Inj./det. temp.: 255°C
 Carrier gas: hydrogen
 Linear velocity: 40cm/sec. (flow rate: 5cc/min.)
 FID sensitivity: 64 x 10¹¹ AFS

Column: Stabilwax®-DB, 30m, 0.32mm ID, 0.25 μ m (cat.# 10824)
 Sample: 0.4 μ L direct injection of a neat hexamethylenediamine sample
 On-column conc.: 10 to 1000ng/component
 Oven temp.: 95°C (hold 6 min.) to 235°C @ 7°C/min. (hold 4 min.)
 Inj./det. temp.: 250°C
 Carrier gas: hydrogen
 Linear velocity: 40cm/sec.
 FID sensitivity: 2 x 10¹¹ AFS

Amines, Primary Rtx®-35 Amine



1. methylamine
2. dimethylamine
3. trimethylamine
4. ethylamine
5. isopropylamine
6. *tert*-butylamine
7. *n*-propylamine
8. diethylamine
9. *sec*-butylamine

Column: Rtx®-35 Amine, 30m, 0.53mm ID, 1.0 μ m (cat.# 11355)
 Sample: primary amines, 50ppm on-column conc. in water
 Inj.: 1.0 μ L, split (10:1), 4mm base-deactivated single gooseneck inlet liner (cat.# 20798-210.1)
 Inj.: 250°C
 Carrier gas: helium, constant pressure
 Linear velocity: 35.7cm/sec.
 Oven temp.: 35°C (hold 5.0 min.)
 Det.: FID @ 300°C