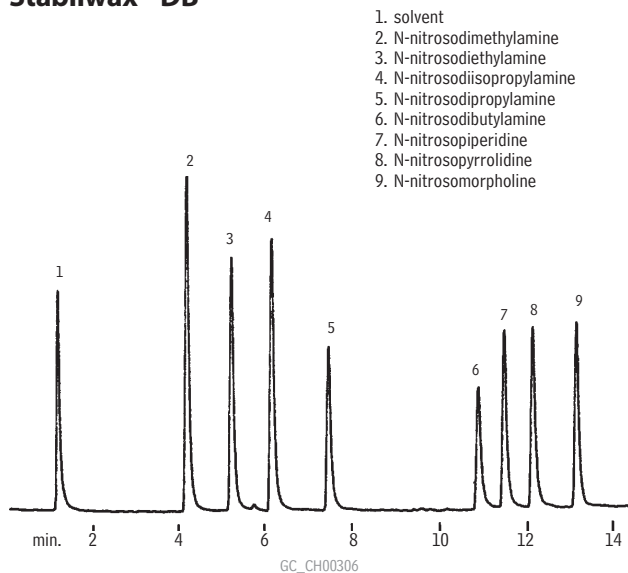


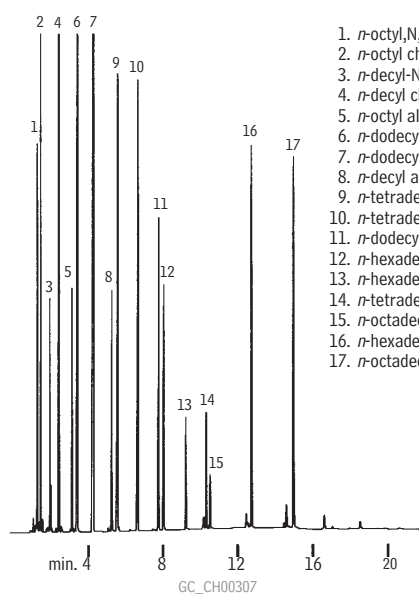
### Nitrosamines Stabilwax®-DB



1. solvent
2. N-nitrosodimethylamine
3. N-nitrosodiethylamine
4. N-nitrosodiisopropylamine
5. N-nitrosodipropylamine
6. N-nitrosodibutylamine
7. N-nitrosopiperidine
8. N-nitrosopyrrolidine
9. N-nitrosomorpholine

Column: Stabilwax®-DB, 60m, 0.53mm ID, 1.0 $\mu$ m (cat.# 10858)  
 Sample: Direct injection of nitrosamines  
 Conc.: 1.0 $\mu$ g/mL  
 Oven temp.: 100°C (hold 1 min.) to 170°C @ 5°C/min.  
 Inj./det. temp.: 200°C  
 Carrier gas: helium  
 Linear velocity: 100cm/sec. (flow rate: 15cc/min.)  
 Det.: TSD

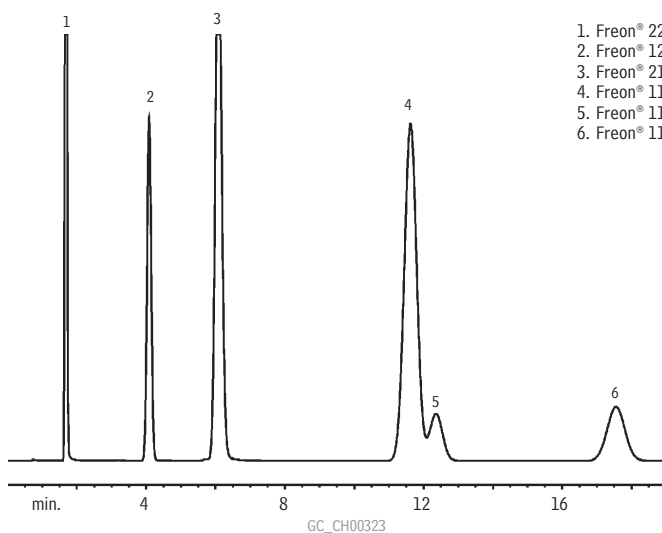
### Amines/Alcohols/Chlorides Stabilwax®



1. *n*-octyl,N,N-dimethylamine
2. *n*-octyl chloride
3. *n*-decyl-N,N-dimethylamine
4. *n*-decyl chloride
5. *n*-octyl alcohol
6. *n*-dodecyl-N,N-dimethylamine
7. *n*-dodecyl chloride
8. *n*-decyl alcohol
9. *n*-tetradecyl-N,N-dimethylamine
10. *n*-tetradecyl chloride
11. *n*-dodecyl alcohol
12. *n*-hexadecyl-N,N-dimethylamine
13. *n*-hexadecyl chloride
14. *n*-tetradecyl alcohol
15. *n*-octadecyl-N,N-dimethylamine
16. *n*-hexadecyl alcohol
17. *n*-octadecyl alcohol

Column: Stabilwax®, 30m, 0.53mm ID, 0.25 $\mu$ m (cat.# 10625)  
 Inj.: 0.5 $\mu$ L split injection  
 Oven temp.: 100°C to 250°C @ 8°C/min. (hold 5 min.)  
 Inj./det. temp.: 250°C  
 Carrier gas: hydrogen  
 Linear velocity: 40cm/sec. (flow rate: 5.2cc/min.)  
 FID sensitivity: 128 x 10<sup>11</sup> AFS  
 Split ratio: 40:1

### Chlorofluorocarbons 5% Krytox on 60/80 CarboBlack B (packed)



1. Freon® 22
2. Freon® 12
3. Freon® 21
4. Freon® 114
5. Freon® 114A isomer
6. Freon® 11

Column: 5% Krytox on 60/80 CarboBlack B, 3.05m, 1/8" OD,  
 2.1mm ID SilcoSmooth™ stainless steel tubing  
 (cat.# 80127-800)  
 Inj.: 1 $\mu$ L injected, concentration 20% each component  
 Oven temp.: 50°C  
 Inj./det. temp.: 200°C/250°C  
 Carrier gas: nitrogen @ 30mL/min.  
 Det.: FID

for **more** info

see pages 684 & 733 for  
 more chlorofluorocarbon  
 chromatograms.