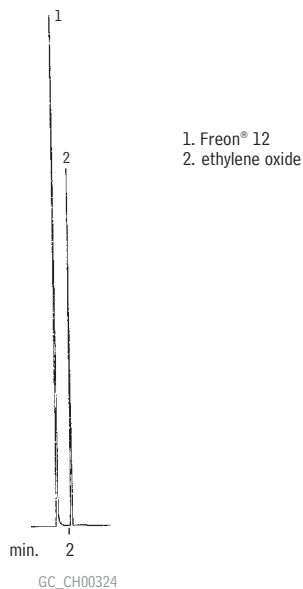
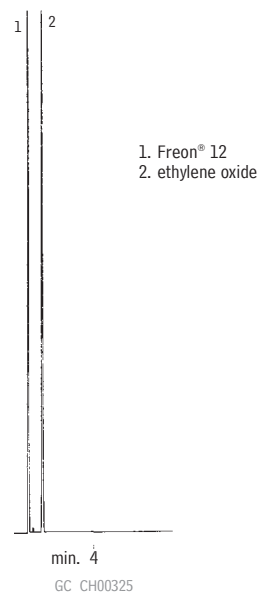


### Freon® 12 & Ethylene Oxide Rtx®-1



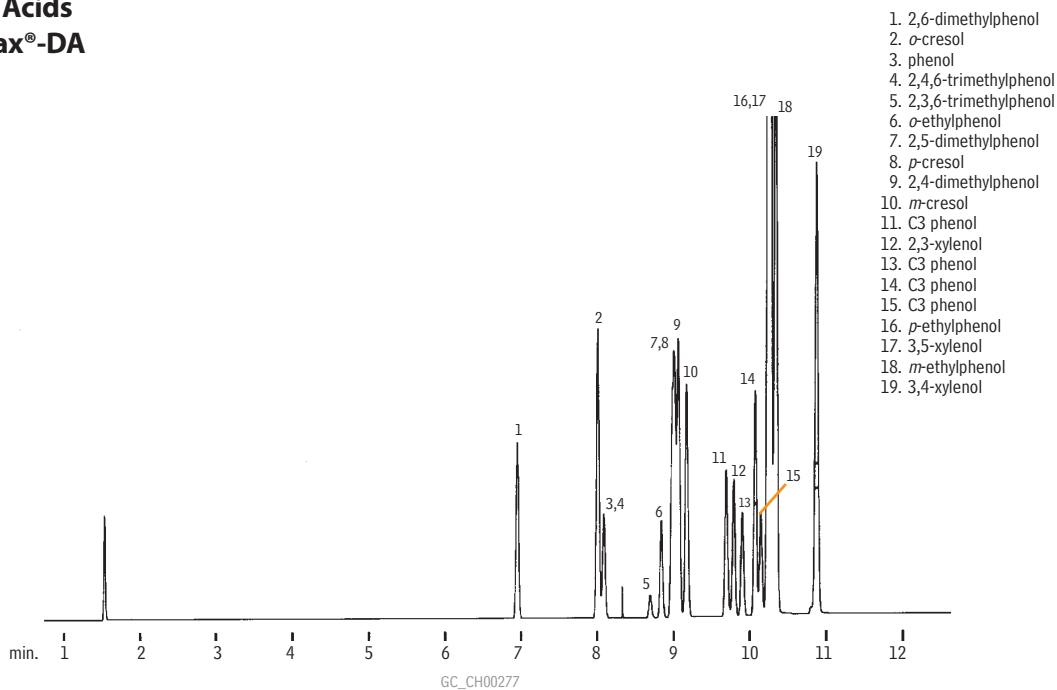
Column: Rtx®-1, 30m, 0.53mm ID, 5.0 $\mu$ m (cat.# 10179)  
 Sample: 50 $\mu$ L split injection of Freon® 12 and ETO  
 Oven temp.: 25°C  
 Inj./det. temp.: 290°C  
 Carrier gas: hydrogen  
 Linear velocity: 40cm/sec.  
 FID sensitivity: 4 x 10<sup>11</sup> AFS  
 Split vent: 40:1

### Freon® 12 & Ethylene Oxide Rtx®-200



Column: Rtx®-200, 30m, 0.53mm ID, 3.0 $\mu$ m (cat.# 15085)  
 Sample: 50 $\mu$ L direct injection of Freon® 12 and ETO  
 Oven temp.: 25°C  
 Inj./det. temp.: 290°C  
 Carrier gas: hydrogen  
 Linear velocity: 40cm/sec. (flow rate: 5.2cc/min.)

### Cresylic Acids Stabilwax®-DA



Column: Stabilwax®-DA, 30m, 0.25mm ID, 0.50 $\mu$ m (cat.# 11038)  
 Sample: Wet needle split injection of cresylic acids  
 Oven temp.: 180°C (hold 2 min.) to 260°C @ 2°C/min.  
 Inj./det. temp.: 250°C  
 Carrier gas: hydrogen  
 Linear velocity: 40cm/sec. (flow rate: 3.2cc/min.)  
 FID sensitivity: 64 x 10<sup>11</sup> AFS  
 Split ratio: 40:1