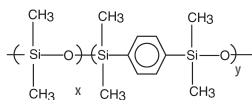


Semivolatiles Analysis

new!

**Rxi®-5Sil MS
Structure**

Rxi®-5Sil MS (low polarity Crossbond® silarylene phase; similar to 5% diphenyl/95% dimethyl polysiloxane)

- Engineered to be a low bleed GC/MS column.
- Excellent inertness for active compounds.
- General purpose columns—ideal for GC/MS analysis of chlorinated hydrocarbons, phthalates, phenols, amines, organochlorine pesticides, organophosphorus pesticides, drugs, solvent impurities, hydrocarbons.
- Temperature range: -60°C to 350°C.

The Rxi®-5Sil MS stationary phase incorporates phenyl rings in the polymer backbone. This improves thermal stability, reduces bleed, and makes the phase less prone to oxidation. Rxi®-5Sil MS columns are ideal for GC/MS applications requiring high sensitivity, including use in ion trap systems.

Rxi®-5Sil MS column is recommended for US EPA Method 8270.

Rxi®-5Sil MS Columns (fused silica)

(Crossbond®, selectivity similar to 5% diphenyl/95% dimethyl polysiloxane)

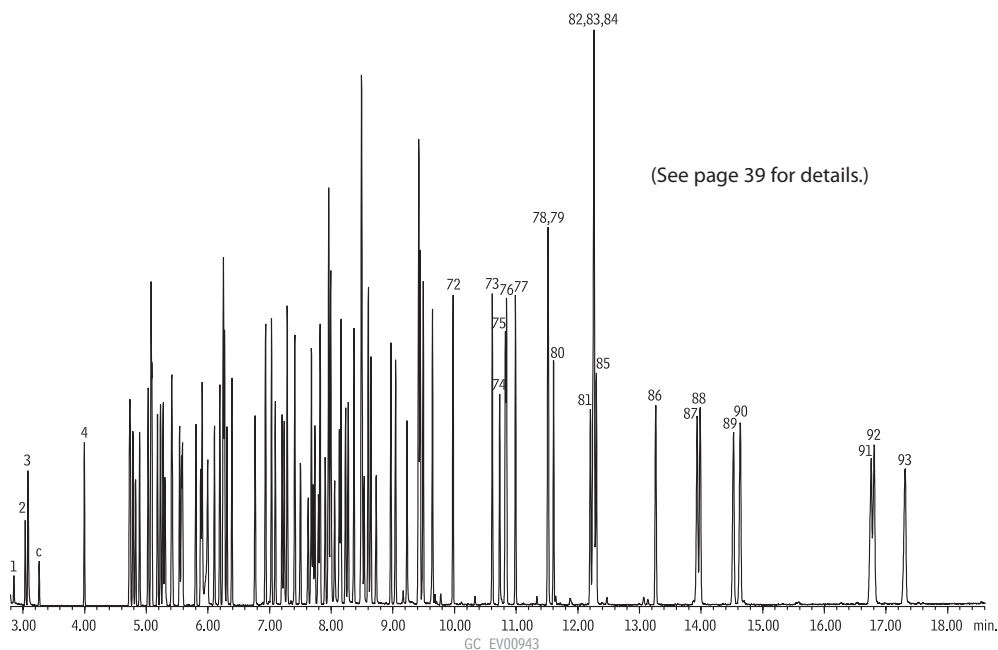
ID	df (μm)	temp. limits	15-Meter	30-Meter	60-Meter
0.25mm	0.10	-60 to 330/350°C	13605	13608	
	0.25	-60 to 330/350°C	13620	13623	13626
	0.50	-60 to 330/350°C	13635	13638	
	1.00	-60 to 325/350°C	13650	13653	13697
0.32mm	0.25	-60 to 330/350°C	13621	13624	
	0.50	-60 to 330/350°C		13639	
	1.00	-60 to 325/350°C		13654	
0.53mm	1.50	-60 to 310/330°C		13670	

ID	df (μm)	temp. limits	10-Meter	20-Meter
0.10mm	0.10	-60 to 330/350°C	43601	
0.18mm	0.18	-60 to 330/350°C		43602
	0.36	-60 to 330/350°C		43604

similar phases

DB-5MS, VF-5ms, CP-Sil 8
Low-Bleed/MS

Semivolatile organics by US EPA Method 8270 on an Rxi®-5Sil MS column.



Cindy Ross
Southeast Sales
Representative
21+ years of service!