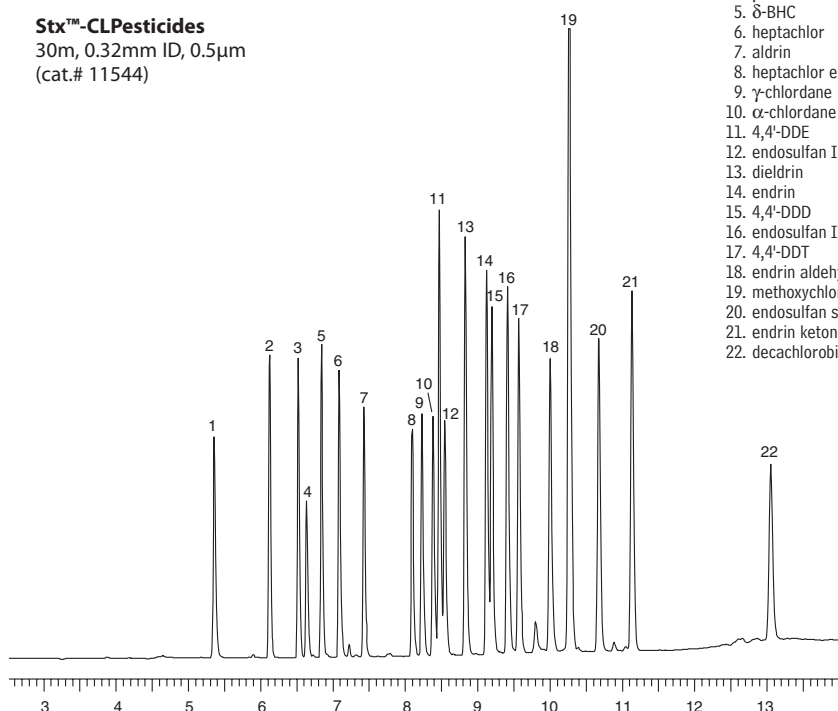


Chlorinated Pesticides Analysis

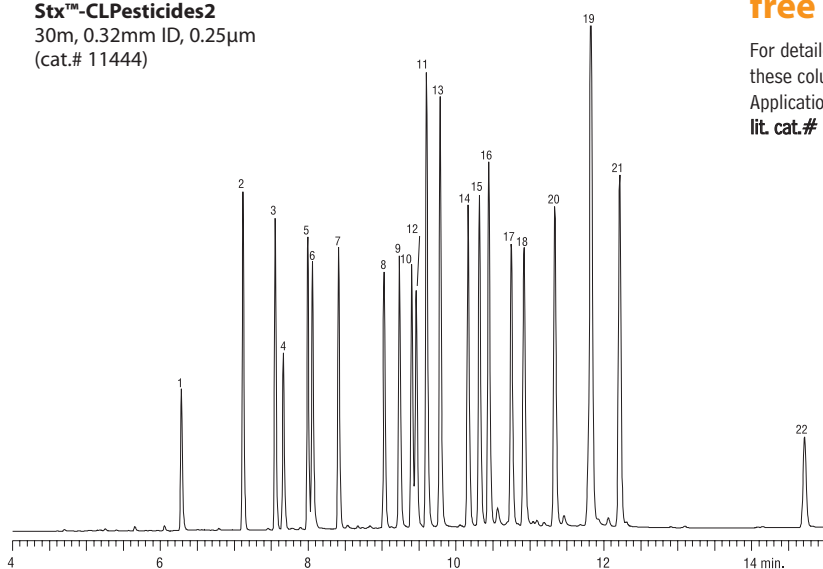
Excellent responses for all US EPA Method 8081
chlorinated pesticides: Stx™-CLPesticides columns.

Stx™-CLPesticides
30m, 0.32mm ID, 0.5µm
(cat.# 11544)



1. 2,4,5,6 tetrachloro-*m*-xylene (SS)
2. α -BHC
3. γ -BHC
4. β -BHC
5. δ -BHC
6. heptachlor
7. aldrin
8. heptachlor epoxide
9. γ -chlordane
10. α -chlordane
11. 4,4'-DDE
12. endosulfan I
13. dieldrin
14. endrin
15. 4,4'-DDD
16. endosulfan II
17. 4,4'-DDT
18. endrin aldehyde
19. methoxychlor
20. endosulfan sulfate
21. endrin ketone
22. decachlorobiphenyl (SS)

Stx™-CLPesticides2
30m, 0.32mm ID, 0.25µm
(cat.# 11444)



free literature

For detailed information about
these columns, request
Applications Note
lit. cat.# 59351B

GC_EV00512

Inj.: 1µL direct injection of 20/40/200ng/mL std. concentration in hexane
Oven temp.: 110°C (hold 1 min.) to 245°C @ 20°C/min. to 300°C @ 6°C/min.
Inj./det. temp.: 210°C/310°C
Carrier gas: helium
Dead time: 0.8min. @ 120°C
Inlet liner: Silitex® deactivated Drilled Uniliner® inlet liner (cat.# 21055-214.1)
Make-up gas: nitrogen

Table of Contents for
Applications

see pages 518-519



Jason Thomas
Innovations Chemist
6+ years of service!

GC COLUMNS | SPECIALTY COLUMNS BY APPLICATION

it's a fact

The Stx™-CLPesticides and Stx™-CLPesticides2 column pair will provide <10 minute analysis times if you use the same conditions used for the Rtx®-CLPesticides and Rtx®-CLPesticides2 column pair listed on [page 79!](#)