

Volatile Organics Analysis

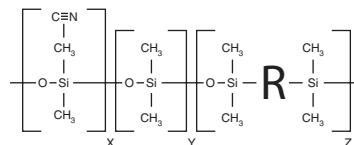


Rxi®-624Sil MS Columns (fused silica)

(midpolarity Crossbond® silarylene phase; equivalent to 6% cyanopropylphenyl/94% dimethyl arylene polysiloxane)

- Low bleed, high thermal stability column—maximum temperatures up to 320 °C.
- Inert—excellent peak shape for a wide range of compounds, including acidic and basic compounds.
- Selective—highly selective for residual solvents, great choice for USP<467>.
- Manufactured for column-to-column reproducibility—well-suited for validated methods.

Rxi®-624Sil MS Structure

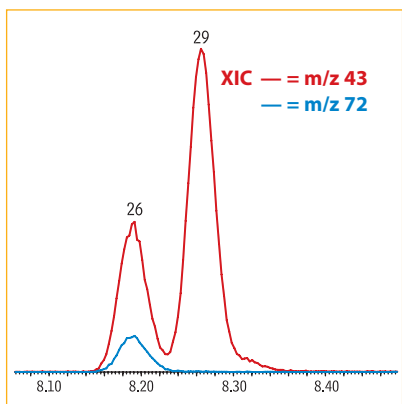


similar phases

DB-624, HP-624, VF-624, BP-624, ZB-624, AT-624, 007-1301, G43R

ID	df	temp. limits	20-Meter	30-Meter	60-Meter
0.18mm	1.00µm	-20 to 300/320°C	13865		
0.25mm	1.40µm	-20 to 300/320°C		13868	
0.32mm	1.80µm	-20 to 300/320°C		13870	13872
0.53mm	3.00µm	-20 to 280/300°C		13871	

Volatiles by EPA Method 8260 on Rxi®-624Sil MS (30m, 0.25mm ID, 1.40µm)



Resolution of critical pairs, low bleed, and high inertness make this a great column for volatiles!

for more info
www.restek.com/cat006

Column: Rxi®-624Sil MS, 30 m, 0.25 mm ID, 1.40 µm (cat.# 13868)
Sample: 8260A Surrogate Mix (cat.# 30240)
 8260A Internal Standard Mix (cat.# 30241)
 8260B MegaMix® Calibration Mix (cat.# 30633)
 VOA Calibration Mix #1 (ketones) (cat.# 30006)
 8260B Acetate Mix (revised) (cat.# 30489)
 California Oxygenates Mix (cat.# 30465)
 502.2 Calibration Mix #1 (gases) (cat.# 30042)

Conc.: 25 ppb in RO water
Injection: purge and trap split (split ratio 30:1)
Inj. Temp.: 225 °C

Purge and Trap

Instrument: OI Analytical 4660
Trap Type: 10 Trap
Purge: 11 min. @ 20 °C
Desorb Preheat Temp.: 180 °C
Desorb: 0.5 min. @ 190 °C
Bake: 5 min. @ 210 °C
Interface Connection: injection port

Oven

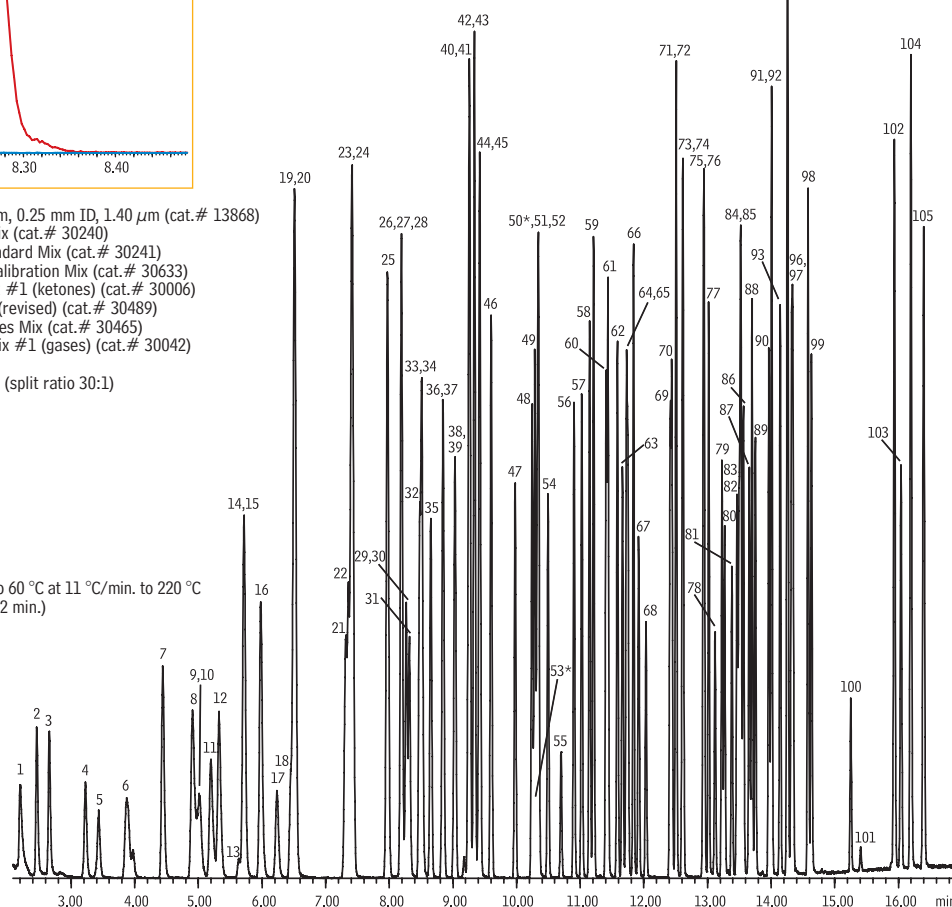
Oven Temp.: 35 °C (hold 5 min.) to 60 °C at 11 °C/min. to 220 °C at 20 °C/min. (hold 2 min.)

Carrier Gas:

Flow Rate: He, constant flow
 1.0 mL/min.
Detector: MS
Mode: Scan
Transfer Line Temp.: 230 °C
Analyzer Type: Quadrupole
Source Temp.: 230 °C
Quad Temp.: 150 °C
Electron Energy: 70 eV
Solvent Delay Time: 1.5 min.
Tune Type: BFB
Ionization Mode: EI
Scan Range: 36-260 amu

Instrument:

Agilent 7890A GC & 5975C MSD



For peak list and complete conditions, see page 547.

GC_EV1169



www.restek.com 103