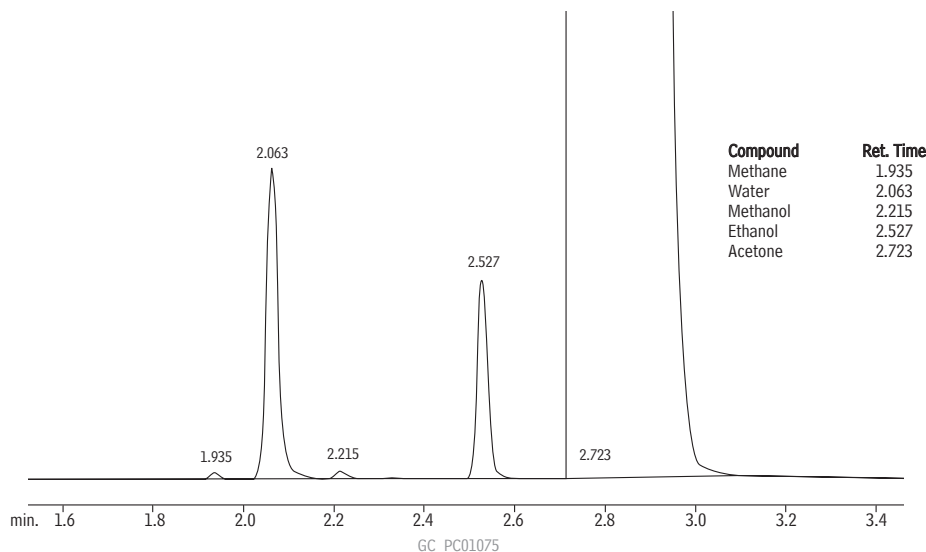


Water and ethanol in acetone on an Rt[®]-Q-BOND PLOT column.



Column: Rt[®]-Q-BOND, 30m, 0.53mm ID, 20 μ m (cat.# 19742)
 Sample: 0.5% water and ethanol in acetone
 Inj.: 3 μ L split (split ratio 11:1), 4mm single gooseneck liner w/ wool (cat.# 22405)
 Inj. temp.: 250°C
 Carrier gas: helium, constant flow
 Linear velocity: 28.7cm/sec. @ 200°C
 Oven temp.: 200°C, isothermal
 Det.: TCD @ 260°C



PLOT Column Particle Trap

- Includes two Press-Tight[®] connectors and a 2.5 m column.
- Protects detector and valves; connects between column and detector or valve.
- Eliminates detector spikes and scratches in valve rotors.

The technology used to adhere particles in PLOT columns is excellent; however, there is still a possibility for particles to dislodge when extreme pressure shocks and gas flow changes are anticipated. This sometimes happens when valve backflush or MS detection is used. In those extreme cases, using particle traps is recommended.



Particle Trap

Description	qty.	cat.#	price
PLOT Column Particle Trap, 2.5m, 0.32mm ID with 2 Press-Tight Connectors	ea.	19753	
PLOT Column Particle Trap, 2.5m, 0.53mm ID with 2 Press-Tight Connectors	ea.	19754	

Restek Customer Service

In the U.S.

Call: 800-356-1688 (ext. 3) or 814-353-1300 (ext. 3)

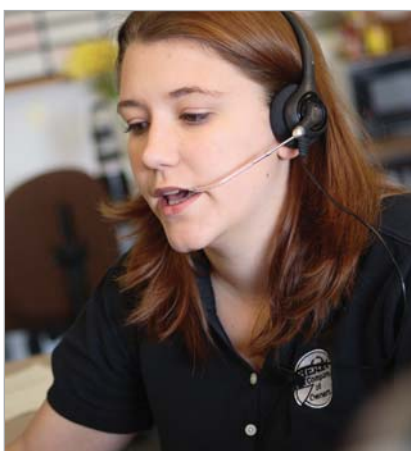
Monday–Friday 8:00 a.m.–6:00 p.m. ET

Fax: 814-353-1309—24-hours a day

Online: www.restek.com—24-hours a day

Outside the U.S.

Contact your Restek representative:
 Refer to our list on pages 4-5 or visit our website at www.restek.com



Melissa Decker, Customer Service

