

Sulfur Analysis

Rt[®]-XLSulfur Packed/Micropacked Columns

- Optimized columns for low ppbv sulfur analyses.
- Eliminate the need for Teflon[®] tubing.
- Column and end-fittings are Sulfinert[®] treated for maximum inertness.

Sulfur analyses are traditionally performed using Teflon[®] tubing to improve column inertness. Unfortunately, Teflon[®] tubing is gas permeable, difficult to pack with high efficiency, prone to shrinkage, and has poor thermal stability. The Rt[®]-XLSulfur packed or micropacked column eliminates these problems. The packing material for Rt[®]-XLSulfur columns is extensively deactivated for analysis of low ppbv levels of hydrogen sulfide and methyl mercaptan. It is then treated to achieve effective separation of hydrocarbons from sulfur compounds. The interior wall and the end-fittings of the Rt[®]-XLSulfur column are Siltek[®] treated, making the column as inert as Teflon[®]. The extra care taken to manufacture this column ensures more accurate analyses of sulfur compounds.

Rt[®]-XLSulfur Columns (packed)*

OD	ID	1-Meter	2-Meter
1/8"	2.0mm	80484-	80485-
3/16"	3.1mm	80482-	80483-

Rt[®]-XLSulfur Columns (micropacked)**

OD	ID	1-Meter	2-Meter
1/16"	1.0mm	19804	19805
0.95mm	0.75mm	19806	19807

*Please add column instrument configuration suffix number to cat.# when ordering. See chart on this page.

**Does not include column nuts and ferrules. Optional installation kits can be ordered separately—see page 133.

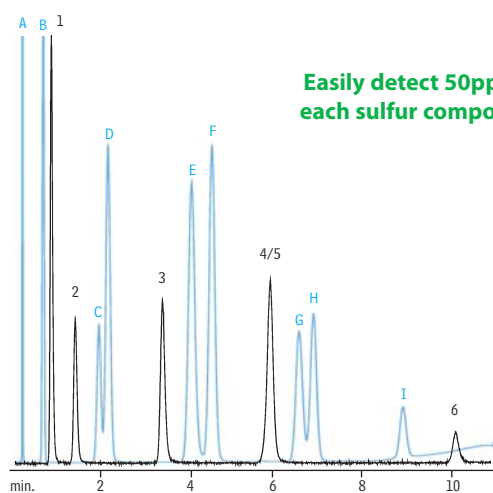
did you know?

Rt[®]-XLSulfur columns are optimized for low ppb-level sulfur analysis!

also available

For adapter kits for installing packed/micropacked columns, see **page 133**.

Rt[®]-XLSulfur micropacked column separates hydrocarbons from sulfur compounds.



Easily detect 50ppb of each sulfur compound!

sulfurs

1. hydrogen sulfide
2. carbonyl sulfide
3. methyl mercaptan
4. ethyl mercaptan
5. dimethyl sulfide
6. dimethyl disulfide

hydrocarbons

- A. methane
- B. ethane
- C. propylene
- D. propane
- E. isobutane
- F. butane
- G. isopentane
- H. pentane
- I. hexane

Column: Rt[®]-XLSulfur micropacked column, 1m, 0.75mm ID (cat.# 19806)
 Conc.: 50ppb each
 Oven temp.: 60°C to 230°C @ 15°C/min.
 Carrier gas: helium
 Flow rate: 9mL/min.
 Det.: SCD/FID

Sulfur standards courtesy of DCG Partnership 1 Ltd., Pearland, TX.

Column Instrument Configurations



General Configuration
Suffix -800



Agilent 5880, 5890, 5987,
6890, 7890:
Suffix -810*



Varian 3700, Vista Series, FID:
Suffix -820



PE 900-3920, Sigma 1,2,3:
Suffix -830



PE Auto System 8300, 8400, 8700
Suffix -840

See page 143 for additional configurations.

Note: Initial 2" of column will be empty, to accommodate a needle. For a completely filled column (not on-column) add suffix -901.

*-810 suffix also includes 1 1/2" void on detector side.