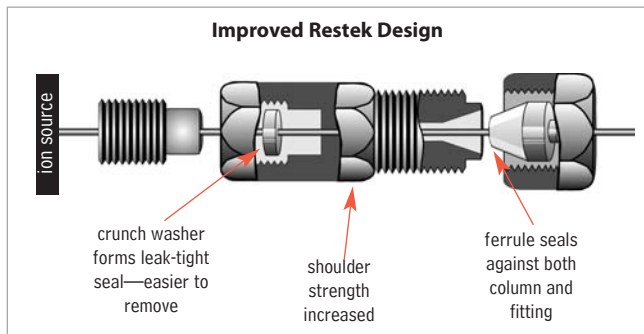
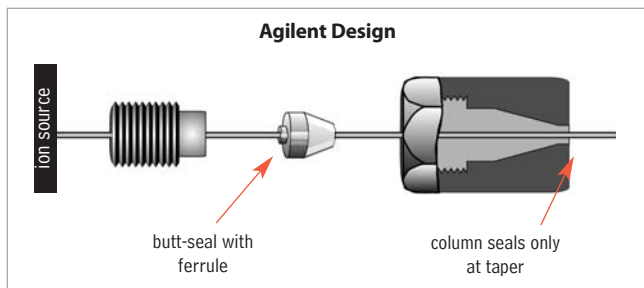


### Restek MSD Conversion Fitting

- A flat, soft aluminum sealing ring deforms and butt-seals against the MSD interface.
- A standard Vespe!® ferrule seals the column and 1/16-inch stainless steel nut.
- Fitting is constructed of nickel-plated brass for longevity and softness.
- Use any standard Vespe!® or Vespe!®/graphite 1/16-inch ferrule.
- Includes a 1/16-inch stainless steel nut and two replacement sealing rings. Order ferrules separately.
- Improved design reduces chance of leaks.



Agilent's MSD interface uses a butt-seal to seal the MSD source to the capillary column. This system is prone to leakage. Restek's MSD conversion fitting is designed with two separate seals to reduce the chance of leaks: a crunch washer seals the MSD conversion fitting to the source; a ferrule seals the capillary tubing to the conversion fitting.



Description	qty.	cat.#	price
MSD Conversion Fitting	ea.	21314	
Replacement Ring Seal for MSD Conversion Fitting	2-pk.	21313	

For Vespe! ferrules, see page 210.

### Restek MSD Source Nut

- 1.2 mm nut bore permits easy removal of ferrules with a standard tapered-needle file (cat.# 20106).
- Made of brass to prevent thread-stripping on the transfer line.
- Design enhances ease of threading onto the transfer line and improves overall lifetime.

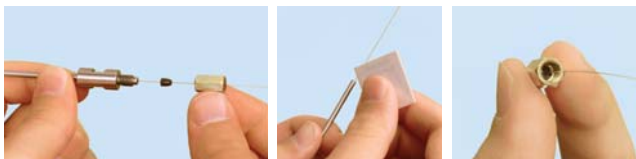


Description	Similar to Agilent part #	qty.	cat.#	price
(Detector) MSD Source Nut	05988-20066	2-pk.	20643	

### restek innovation!

### Capillary Installation Gauge for Agilent 5973/5975 MS

- Seats ferrules onto column for consistent installations.
- Made from high-quality stainless steel.

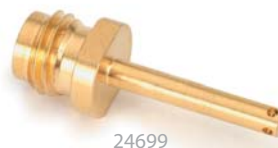


Install the nut and ferrule onto the column, then insert the column through the installation tool, exposing several centimeters at the exit end.

Tighten the nut. (not depicted)

Score and remove the exposed end of the column, then loosen the nut.

Description	Similar to Agilent part #	qty.	cat.#	price
Capillary Installation Gauge for Agilent 5973/5975 MS	G1099-20030	ea.	21894	



### Gold Tip Transfer Line

- For use with Agilent 5971/5972 MS Systems.
- Gold-plated for inertness.
- Meets or exceeds original manufacturer's performance.

Description	Similar to Agilent part #	qty.	cat.#	price
Gold Tip Transfer Line	05971-20305	ea.	24699	



### Replacement Interface with Bellows for Agilent 5971/5972 MS

- Meets or exceeds manufacturer's performance.
- Made of high-quality stainless steel.

Description	Similar to Agilent part #	qty.	cat.#	price
Replacement Interface with Bellows for Agilent 5971/5972 MS	05971-60302	ea.	22659	